



YOSHIMURA

RESEARCH & DEVELOPMENT OF AMERICA, INC.

5420 DANIELS STREET STE A, CHINO CA, 91710 · (800)634-9166 · (909)628-4722 · FACSIMILE (909)591-2198

www.yoshimura-rd.com

OFF-ROAD PERFORMANCE EXHAUST SYSTEM

**2008
Kawasaki
KLX450R**

2455503

STAINLESS STEEL FULL SYSTEM WITH ALUMINUM SLEEVE

NOTE: THIS SYSTEM IS DESIGNED FOR USE IN CLOSED COURSE COMPETITION AND IS NOT INTENDED FOR ANY OTHER USE.



THIS PRODUCT IS DESIGNED FOR USE IN CLOSED COURSE RACING AND IS NOT INTENDED FOR ANY OTHER USE.



CAUTION: The muffler packing on this system **MUST** be replaced every 8-10 hours of use, or every 1-2 motos. Failure to follow recommended muffler re-packing interval can cause muffler damage and may void the warranty.



NOTE: IN THE STATE OF CALIFORNIA, IT IS ILLEGAL TO MODIFY THE EMISSION CONTROL SYSTEM. WHICH INCLUDES THE CARBURETORS OF ANY VEHICLE.

Caution: Exhaust system may be extremely hot. Let motorcycle cool down before beginning installation.

Note: Read through all instructions before beginning installation.

Tools Needed:

Metric Socket Set
Ratchet and Extension
Torque Wrench

Installation Steps:

- 1 Remove right rear number plate (see Fig. 1 for bolt locations).
- 2 Remove stock exhaust system and stock exhaust port gasket (see Fig. 2 and Fig. 3 for bolt locations).
- 3 Install new stock exhaust port gasket (not included).
- 4 Install Yoshimura header using stock header nuts. Do not tighten header nuts at this time.
- 5 Install supplied rubber grommet into aluminum muffler mounting bracket. Install aluminum insert into rubber grommet (make sure shoulder of aluminum insert faces toward the frame, see Fig. 4).
- 6 Install Yoshimura tailpipe and muffler onto Yoshimura header.
- 7 Install supplied muffler mount bolt and supplied washer. Install supplied chassis mount bolt.
- 8 Install Yoshimura heatshield using the supplied heatshield bolts (see Parts Diagram on page 4).



Fig. 1

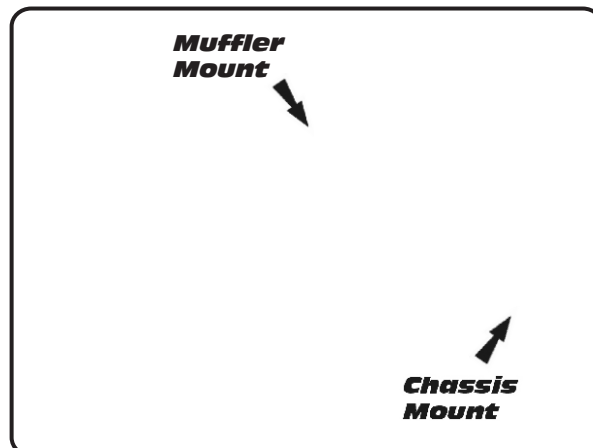


Fig. 2

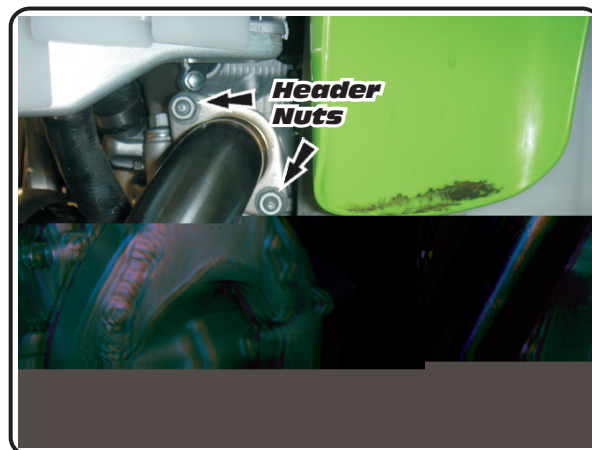


Fig. 3

- 9 Check exhaust for proper position and clearance and adjust if necessary.
- 10 Torque header nuts to 1.0 kg-m (7.3 lb-ft).
- 11 Torque muffler mount bolt to 2.5 kg-m (18 lb-ft).
- 12 Torque chassis mount bolt to 2.5 kg-m (18 lb-ft).
- 13 It is recommended that the muffler and tailpipe be wiped down with rubbing alcohol to remove oil and fingerprints. This will help prevent tarnishing of the finish after the exhaust is heated up.
- 14 Before starting motorcycle, check for proper clearance between new exhaust system and rear suspension (i.e. tire, swingarm, brake, rear shock, etc). If any problem is found, please carefully follow through the installation steps again. If problem still persists, please call Yoshimura tech department at (800) 634-9166 / in CA (909) 628-4722.
- 15 Reinstall number plate.

NOTE: Your Yoshimura exhaust system has been designed with weight centralization in mind. The muffler is designed to be as far forward as possible, resulting in limited clearance between the number plate and tailpipe. You may want to trim the number plate where it comes in contact with the tailpipe and muffler (see Fig. 5 and Fig. 6).

NOTE: After starting motorcycle, it is normal for new exhaust system and muffler to emit smoke until oil residue burns off.

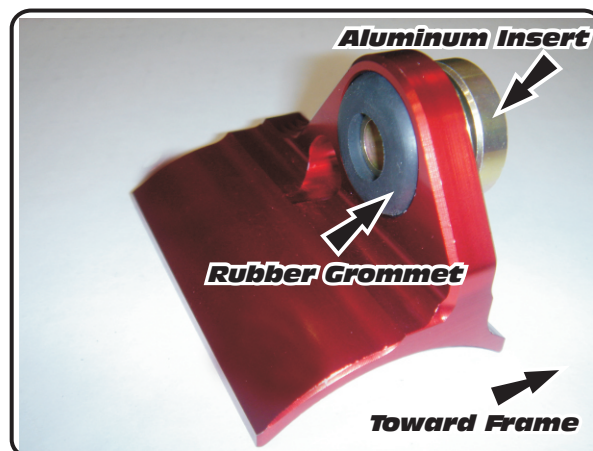


Fig. 4

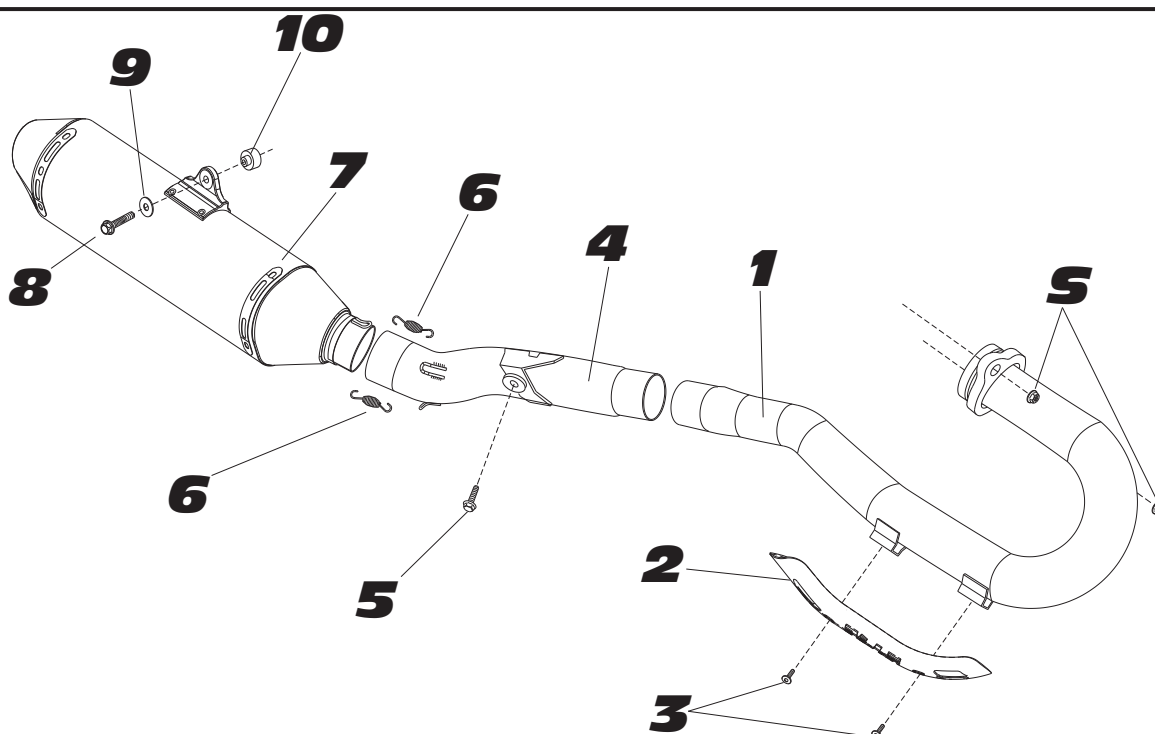


Fig. 5



Fig. 6

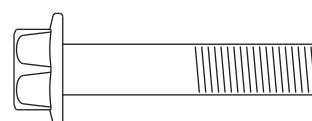
#2455503



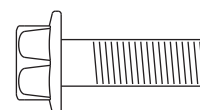
Parts Diagram

NO.	DESCRIPTION	QTY	PART #
1	Yoshimura Stainless Steel Header	1	2455-101
2	Yoshimura Stainless Steel Heatshield	1	2190-HS
3	Heatshield Bolts	2	RC116HSB
4	Yoshimura Stainless Steel Tailpipe	1	2455-144
5	8mm X 20mm Bolt	1	M8X20H
6	Small Exhaust Springs	2	RACE-SPX-1
7	Yoshimura Race Muffler	1	2455503-RMA
8	8mm X 35mm Bolt	1	M8X35H
9	Large 8mm Washer	1	8MMWASHERL
10	Aluminum Insert for Rubber Grommet	1	ALS-010
**	Rubber Grommet	1	Z1022
**	Yoshimura Spring Puller Tool	1	ST-200
**	Yoshimura Vinyl Sticker	1	17029

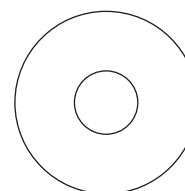
Nuts and Bolts Guide (Actual Size):



8mm x 35mm
Flange Hex Bolt



8mm x 20mm
Flange Hex Bolt



8mm Large Flat Washer



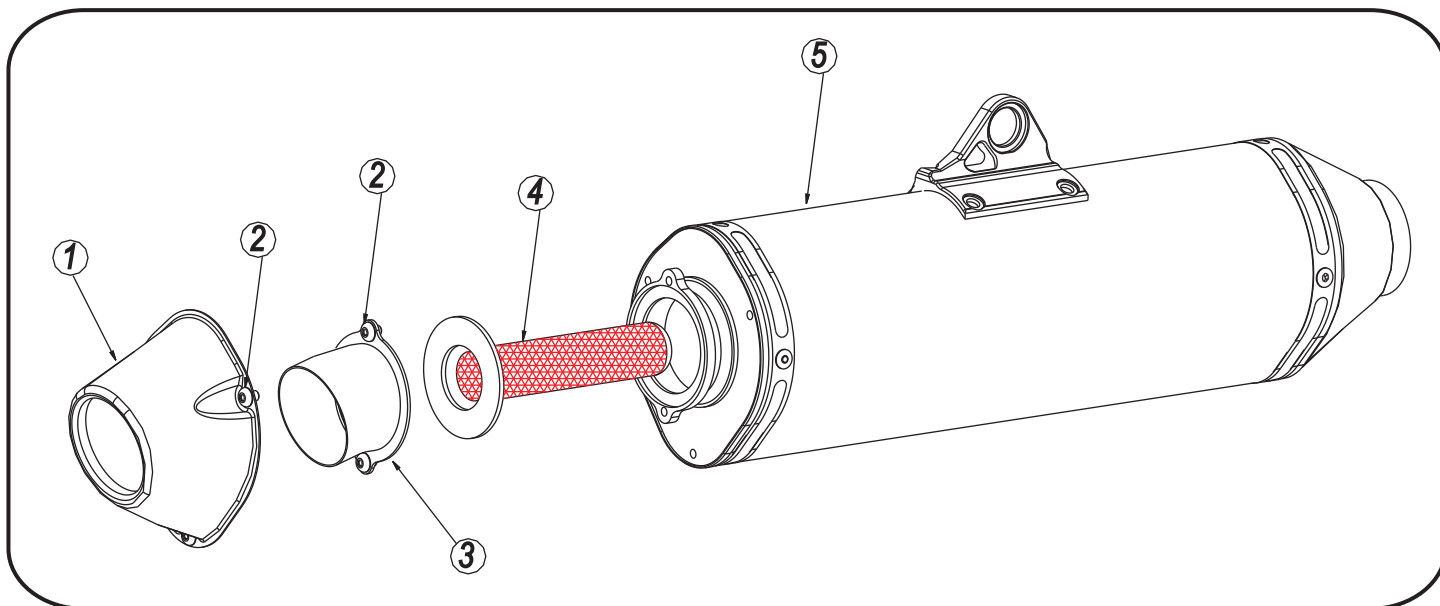
YOSHIMURA

RESEARCH & DEVELOPMENT OF AMERICA, INC.

5420 DANIELS STREET SUITE A, CHINO, CA 91710 · (800)634-9166 · (909)628-4722 · FACSIMILE (909)591-2198

www.yoshimura-rd.com

Spark Arrester Cleaning Information



Parts Diagram

Caution: *Muffler can be extremely hot. Let muffler cool down before removing spark arrester.*

Note: *Read through all instructions before beginning disassembly.*

NO.	DESCRIPTION	QTY
1	Cone Cap	1
2	5mm x 10mm Button Head Bolt	5
3	Exhaust Tip	1
4	Spark Arrester	1
5	Muffler Assembly	1

Tools Needed:

3mm Allen Key
Wire Brush
Pair of Gloves
Safety Glasses

Cleaning Steps:

- 1 Using a 3mm Allen key, remove the three 5mm x 10mm button head bolts that secure the cone cap to the muffler (see Parts Diagram for location).
- 2 Remove the two 5mm x 10mm button head bolts that secure the spark arrester to the muffler. Remove the spark arrester from the muffler.

- 3 Using a wire brush, remove carbon deposits from spark arrester screen. Inspect the screen for excessive wear or damage. If spark arrester is excessively worn or damaged, the spark arrester must be replaced. Cleaning and inspection should be performed after every 60 hours of use. (Caution: Gloves and Safety Glasses should be worn while cleaning spark arrester.)

- 4 Re-install spark arrester and cone cap. Torque the 5mm x 10mm bolts to 1.0 kg-m (7.3 lb-ft).

Note: *It is recommended that a low strength "Loc-tite" is used on the 5mm x 10mm bolts.*