



YOSHIMURA

RESEARCH & DEVELOPMENT OF AMERICA, INC.

5420 DANIELS STREET STE A, CHINO CA, 91710 · (800)634-9166 · (909)628-4722 · FACSIMILE (909)591-2198

www.yoshimura-rd.com

YOSHIMURA PERFORMANCE EXHAUST SYSTEM 2004-2007 YAMAHA RHINO 660

2361500

RS-2 FULL SYSTEM WITH STAINLESS STEEL SLEEVE



**THIS PRODUCT IS DESIGNED FOR USE IN CLOSED COURSE
RACING AND IS NOT INTENDED FOR ANY OTHER USE.**



CAUTION: The muffler packing on this system **MUST** be replaced every 6-8 hours of use, or after each moto. Failure to follow recommended muffler re-packing interval can cause muffler damage and may void the warranty.



NOTE: IN THE STATE OF CALIFORNIA, IT IS ILLEGAL TO MODIFY THE EMISSION CONTROL SYSTEM, WHICH INCLUDES THE CARBURETORS OF ANY VEHICLE.

Caution: Exhaust system can be extremely hot. Let motorcycle cool down before beginning installation. Always wear hand and eye protection and take precautionary measures to avoid injury.

Note: Read through all instructions before beginning installation.

Tools Needed:

10mm and 12mm sockets

3/8" ratchet and extension

12mm wrench

Torque wrench

Drill

1/4" and 11/16" drill bits (or step drill bit)

Installation Steps:

1. Remove the bed.
2. Remove the stock heatshield by removing the four bolts that hold it in place (see Fig. #1).
3. Remove the bolts holding the stock muffler in place and the bolts holding the bracket on between the stock header and tailpipe (see Fig. #2).
4. Loosen the stock exhaust clamp connecting the header to the tailpipe. Slide the tailpipe off the header (see Fig. #3).
5. Remove the stock header by removing the four header nuts (see Fig. #4).
6. After the header has been removed, remove the stock muffler.
7. Remove the old exhaust port gaskets and install new OEM exhaust port gaskets (new exhaust port gaskets not supplied). Install Yoshimura headers using stock header nuts, but do not tighten at this time.
8. Remove stock rubber exhaust damper and stock muffler mounting bracket.
9. Re-route taillight wiring harness as shown in Fig. 5.
10. Install right and left side Yoshimura mounting brackets using supplied hardware (see Fig #6). Do not torque at this time.
11. Install right and left side Yoshimura mufflers using supplied hardware (see Fig #6) and parts diagram on page 5. Do not torque at this time.

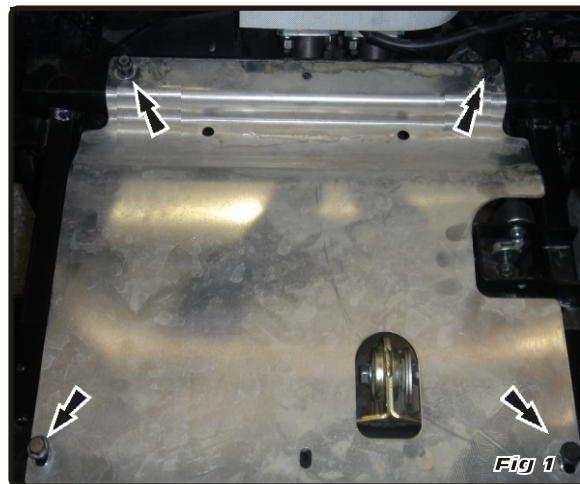


Fig 1

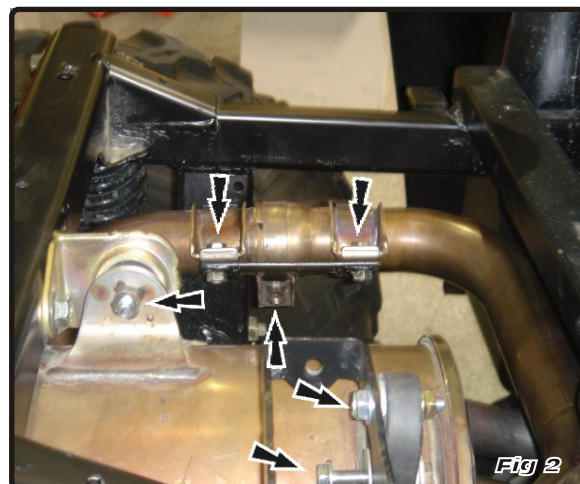


Fig 2

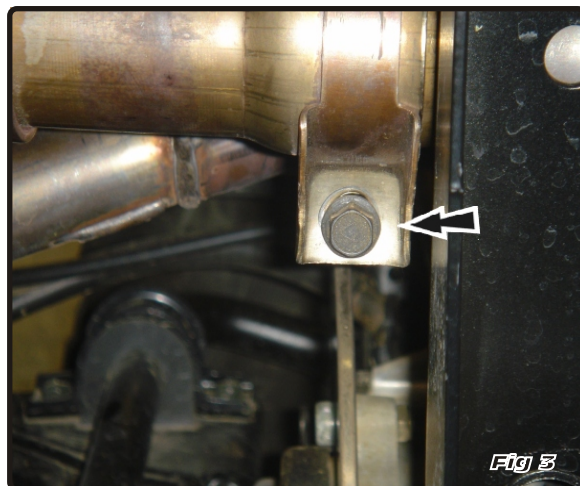


Fig 3

12. Make sure alignment of the mufflers is correct and torque header nuts to 7.3 lb-ft (1.0 kg-m). Tighten bracket bolts to 7.3 lb-ft (1.0 kg-m). Tighten Muffler bolt to 9.5 lb-ft (1.3 kg-m).

NOTE: It is recommended that the muffler and tailpipe be wiped down with rubbing alcohol to remove oil and fingerprints. This will help prevent tarnishing of the finish after the exhaust is heated up.

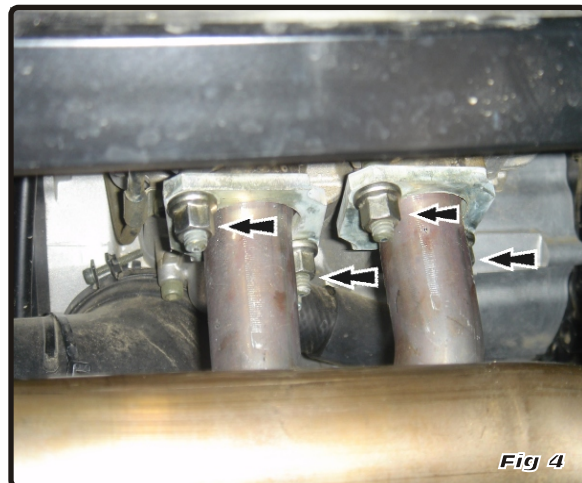
13. Drill holes in stock heatshield using the supplied template (see page 4 for drilling instructions).

14. Reinstall stock heatshield.

15. Reinstall bed.

16. Before starting motorcycle, check for proper clearance between new exhaust system and rear suspension (i.e. tire, swingarm, brake, rear shock, etc). If any problem is found, please carefully follow through the installation steps again. If problem still persists, please call Yoshimura tech department at (800) 634-9166 / in CA (909) 628-4722.

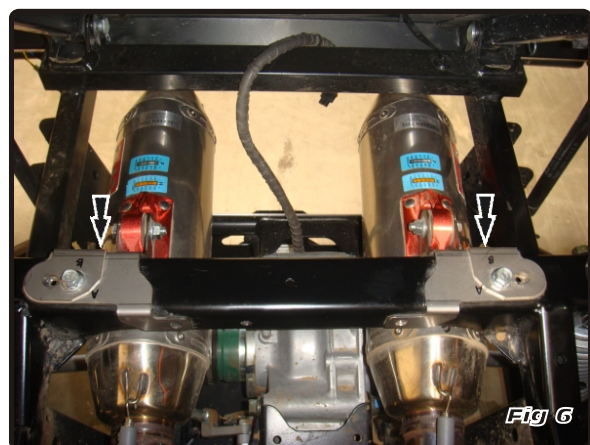
NOTE: After starting motorcycle, it is normal for new exhaust system and muffler to emit smoke until oil residue burns off.



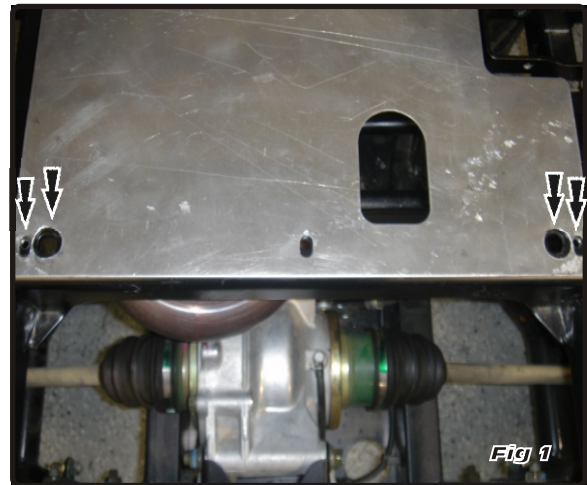
Jetting Recommendations:

-No jetting recommendations.

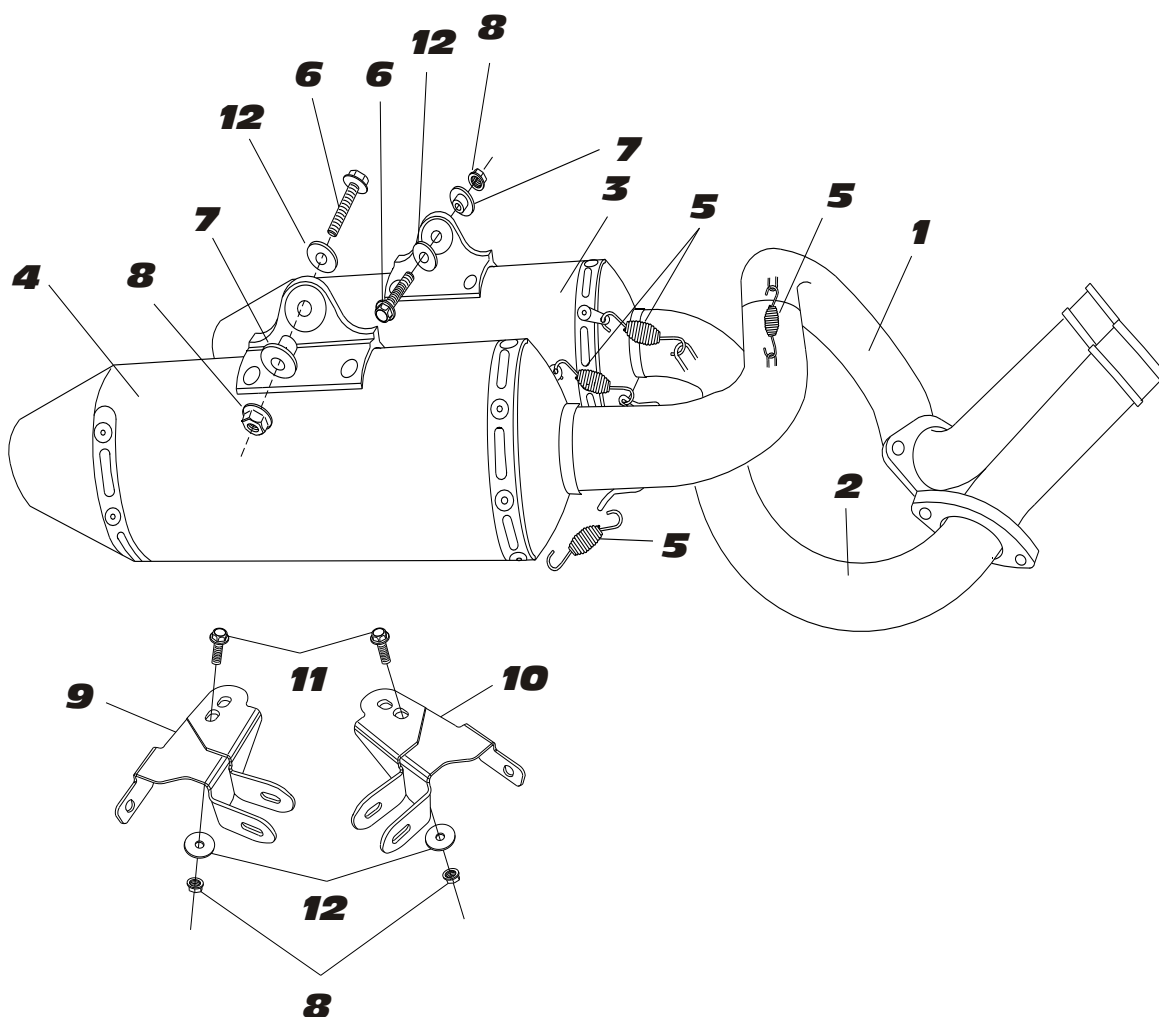
Note: It is illegal to modify the fuel system on any vehicle in the state of California.



1. Cut template out using a pair of sharp scissors.
2. Lay the template out on the stock heatshield making sure that the templates up side is showing. Tape template in place.
3. Using a center punch, make a punch mark in the center of the circle.
4. Using a 1/4" drill bit drill a pilot hole first.
5. Using a 11/16" drill bit (or a step bit) finish drilling hole size to 11/16" (17.3mm).
6. After drilling make sure all bolt holes line up correctly (as shown in Fig 1).
7. Reinstall heatshield (as shown in Fig. 2).



2361500



NO.	DESCRIPTION	QTY	PART #
1	Yoshimura Stainless Steel Left Header	1	2361-102
2	Yoshimura Stainless Steel Right Header	1	2361-103
3	Yoshimura Left Side Muffler	1	2361500-LMA
4	Yoshimura Right Side Muffler	1	2361500-RMA
5	Medium Exhaust Springs	6	RACE-SPS-1
6	8mm x 35mm Bolt	2	M8X35H
7	Aluminum Spacer	2	ALS-001
8	8mm Nut	4	8MMNUT
9	Left Muffler Mount Bracket A	1	2361500-BRKTA-L
	Left Muffler Mount Bracket B	1	2361500-BRKTB-L
10	Right Muffler Mount Bracket A	1	2361500-BRKTA-R
	Right Muffler Mount Bracket B	1	2361500-BRKTB-R
11	8mm x 25mm Bolt	2	M8X25H
12	8mm Washer, Large	4	8MMWASHERL
**	Rubber Grommet for Muffler Brackets	2	011257-00
**	Spring Puller Tool	1	ST-200
**	Stock Heatshield Hole Drilling Template	1	**
**	Offroad Endcap Plug	2	347PLUG
**	Yoshimura Vinyl Sticker	1	17029