



# YOSHIMURA

RESEARCH&DEVELOPMENT OF AMERICA, INC.

5420 DANIELS STREET STE A, CHINO CA., 91710 · (800) 634-9166 · (909) 628-4722 · FAX (909) 591-2198

[www.yoshimura-rd.com](http://www.yoshimura-rd.com)

## Street Series

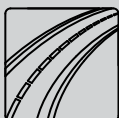
Qualified Manufacturer Declared "Replacement Part"

**2009~2012  
Kawasaki ZX-6R**

**1464202 (CF/CF)**

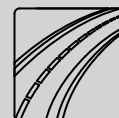
**1464205 (SS/CF)**

**R-77 Stainless Steel Slip-On**



All Street Series systems are:

- Slip-on/Bolt-on applications that do not require tampering with the vehicle's emissions control system.
- CARB/EPA tail-pipe emissions compliant.
- Marked with appropriate EPA noise labels.
- Not tested for EPA new vehicle noise compliance.



✘ You must know how to remove and replace your stock exhaust in order to install this product otherwise have it installed by a professional mechanic. Keep all stock parts from your existing system as some components may be necessary to install your new Yoshimura exhaust depending on the application. Read through all instructions before beginning installation. Exhaust system can be extremely hot. Let motorcycle cool down before beginning installation. Always wear hand and eye protection and take precautionary measures to avoid injury. ✘

NOTE: IN THE STATE OF CALIFORNIA, IT IS ILLEGAL TO MODIFY THE EMISSION CONTROL SYSTEM, WHICH INCLUDES THE CARBURETORS OF ANY VEHICLE.

**Caution:** Exhaust system can be extremely hot. Let motorcycle cool down before beginning installation. Always wear hand and eye protection and take precautionary measures to avoid injury.

**Note:** Read through all instructions before beginning installation.

## Tools Needed:

Metric Socket Set  
3/8" ratchet and extension  
Metric Combination Wrench Set  
Metric Allen Wrench Set  
Tamper Proof Torx Bit  
Torque Wrench  
Small Flat Head Screwdriver

## Installation Steps:

1. Remove stock muffler.
  - Remove heatshield and loosen muffler clamp.
  - Remove exhaust valve cables from muffler.
  - Remove muffler mounting bolt.
  - Remove stock muffler from bike.
2. Remove bolt on stock clamp and install supplied spring hook tab. (See Fig. 3)
3. Reinstall stock clamp.
4. For ease of installation hook supplied exhaust spring into spring hook tab.
5. Insert rubber heatshielding into Yoshimura muffler clamp. (See parts diagram)
6. Slide clamp over muffler.
7. Install Yoshimura muffler/tailpipe assembly using stock hardware. Do not torque at this time. (Note: Yoshimura slip-on system retains stock gasket)
8. Test fit Yoshimura heatshield to match alignment with stock heatshield profile. Adjust tailpipe and/or muffler as necessary.
9. Torque stock clamp bolt to 12 lb-ft (16 Nm).
10. Torque muffler mounting bolt to 16 lb-ft (21.5 Nm).
11. Using supplied spring puller, install exhaust spring to connect Yoshimura tailpipe to the stock clamp.
12. Install Yoshimura heatshield using supplied bolts.
13. Check for proper clearance between new exhaust system and motorcycle. (i.e. Swing-arm, body work, etc.) If any problem is found, please carefully follow through the installation steps again. If problem still persists, please call Yoshimura tech department at (800)634-9166 / in CA (909)628-4722.



Fig. 1



Fig. 2

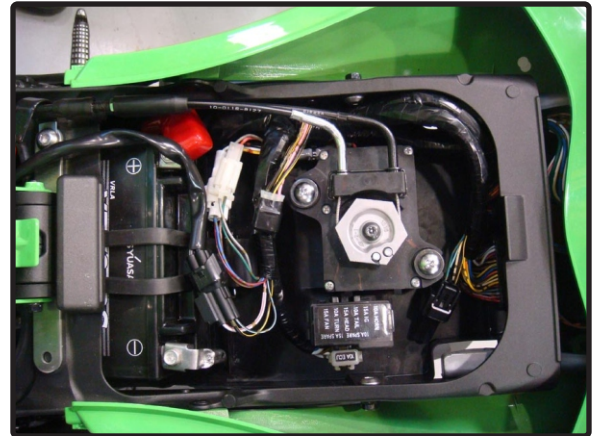
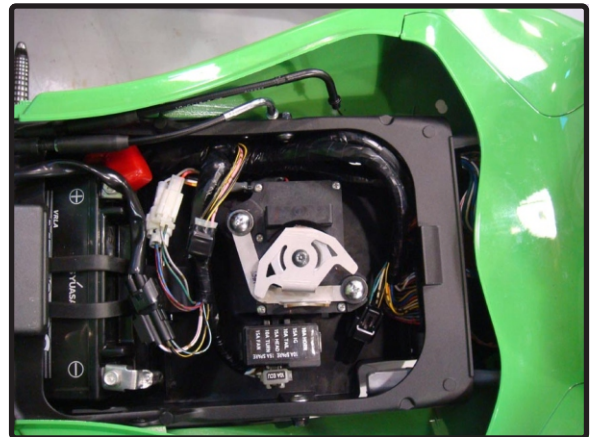


Fig. 3

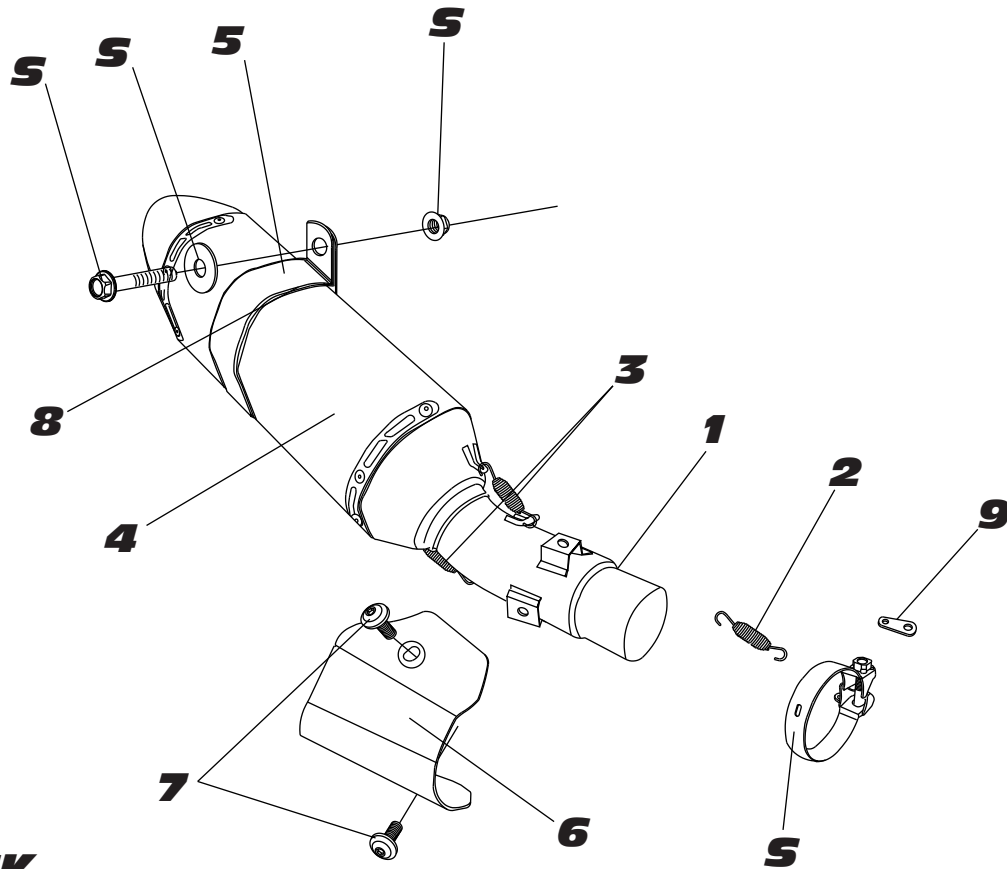
**Note:** After starting motorcycle, it is normal for new exhaust system and muffler to smoke until oil residue burns off.

**Yoshimura Servo Motor Bracket Installation**

1. Remove driver seat.
2. Take note of position of exhaust valve servo.
3. Remove cables.
4. Remove exhaust servo nut using tamper proof torx bit.  
*Note: Firmly hold servo pulley in place while loosening servo nut to prevent damage to servo motor.*
5. Remove two phillips screws.
6. Install Yoshimura servo motor bracket using stock bolts.  
(Shown in Fig. 2)
7. Install Yoshimura adapter plate on top of the servo pulley using stock bolt. Firmly hold servo pulley in place while tightening servo nut to prevent damage to servo motor.
8. Reinstall seat.

**Fig. 1****Fig. 2**

**146420(2,5,6,7)**



**S=STOCK**

Parts Diagram

NO.	DESCRIPTION	QTY	PART #
1	Yoshimura Stainless Steel tailpipe	1	1464-435
2	Medium Exhaust Spring	1	RACE-SPS-1
3	82mm Exhaust Spring	2	RACE-82MM
4	Yoshimura R77 Muffler with Carbon Fiber Sleeve and Endcap with Stainless Steel Sleeve and CF Endcap with Stainless Steel Sleeve and Endcap with Titanium Sleeve and CF Endcap	1	CRR77126W SRR77126W SRR771265W-SS TRR77126W
5	Stainless Steel Muffler Clamp Stainless Steel or Titanium Sleeve use Carbon Fiber Sleeve use	1	1121-MPCR 1121-MPCR
6	Aluminum Heatshield	1	1464-HS
7	6mm x 8mm Flange Button Head Screw	2	RC116HSB-BK
8	Muffler Clamp Heat Insulator	1	HT SHLDR77
9	Exhaust Spring Hook Tab	1	1411-SH
**	ZX6R Servo Motor Bracket	1	1464-CKRBRKT
**	ZX6R Servo Motor Stopper Plate	1	1462-CKRPLT
**	Low Volume Insert Kit	1	INS-04-K
**	Yoshimura Spring Puller Tool	1	ST-200
**	Yoshimura Vinyl Sticker	1	17029