



YOSHIMURA

RESEARCH&DEVELOPMENT OF AMERICA, INC.

5420 DANIELS STREET STE A, CHINO CA., 91710 · (800)634-9166 · (909)628-4722 · FACSIMILE (909)591-2198

www.yoshimura-rd.com

Street Series

Qualified Manufacturer Declared "Replacement Part"

2014~2017

KTM Super Duke

16290BP520 (SS/CF)

Alpha Taper Slip-On Exhaust System



Signature Series systems are:

- CARB/EPA tail-pipe emissions compliant.
- Marked with appropriate EPA noise labels.
- Independent laboratory tested for EPA new vehicle noise compliance.

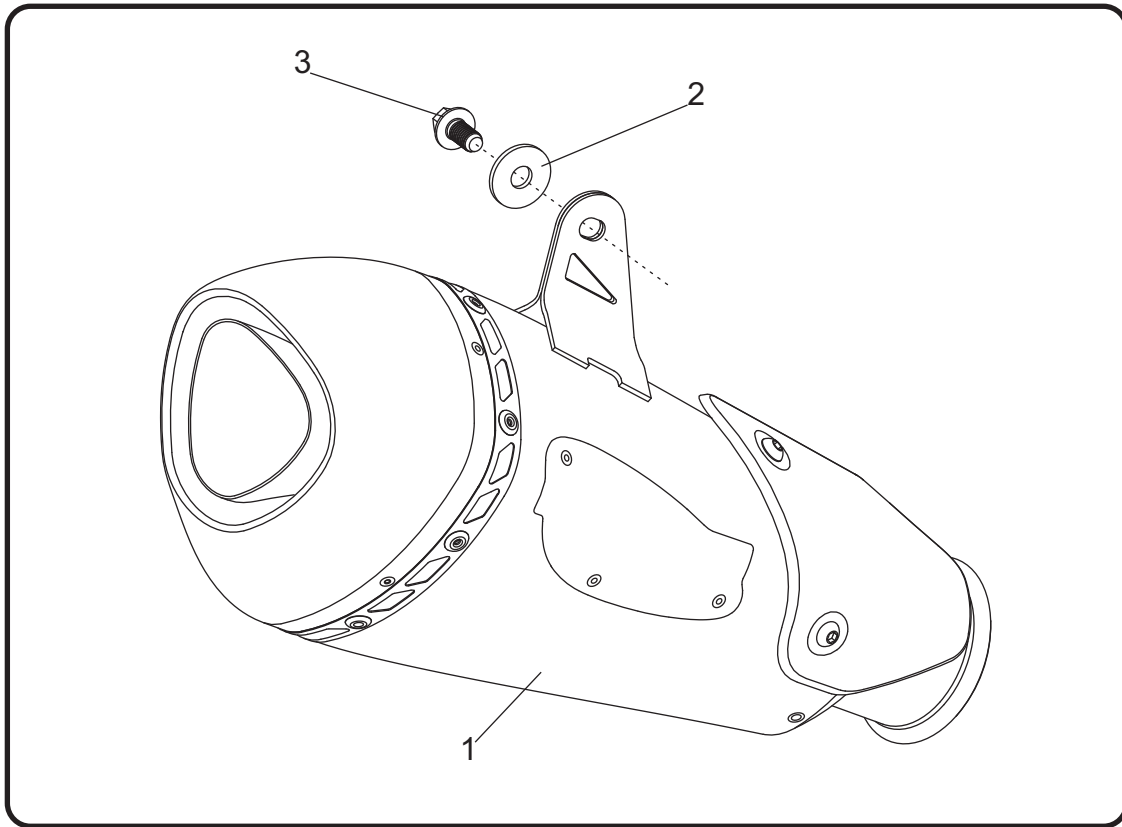


You must know how to remove and replace your stock exhaust in order to install this product otherwise have it installed by a professional mechanic. Keep all stock parts from your existing system as some components may be necessary to install your new Yoshimura exhaust depending on the application. Read through all instructions before beginning installation. Exhaust system can be extremely hot. Let motorcycle cool down before beginning installation. Always wear hand and eye protection and take precautionary measures to avoid injury.



NOTE: IN THE STATE OF CALIFORNIA, IT IS ILLEGAL TO MODIFY THE EMISSION CONTROL SYSTEM, WHICH INCLUDES THE CARBURETORS OF ANY VEHICLE.

Assembly Diagram



No.	Item	Description	Qty.
1	16290-BP520RMA	Yoshimura Muffler Assembly	1
2	8MMWASHERL	8mm Large Washer	1
3	M8X16H	8mmX16mm FLANGED HEX HEAD BOLT	1

Removal

1. Remove exhaust clamp screw and remove exhaust clamp.

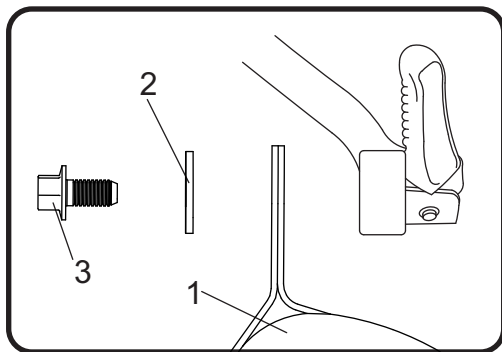
Note: The stock exhaust clamp will be re-used with the Yoshimura slip-on exhaust system.

2. While securely supporting the stock muffler assembly, remove muffler mount bolt and carefully remove the stock muffler assembly.

Note: The stock exhaust gasket will be re-used with the Yoshimura slip-on exhaust system. Inspect and replace if necessary.

Installation

1. Install Yoshimura muffler assembly onto stock header outlet.
2. Re-install the stock exhaust clamp at tailpipe and header connection. Do not torque at this time.
3. Align muffler mount bracket to the inside of the stock muffler mount and secure using the (No. 3) *M8X16H* bolt and (No. 2) *8MMWASHERL* washer as shown below. Do not torque at this time.



4. Torque exhaust clamp to factory specification.
5. Torque (No. 3) *M8X16H* muffler mount bolt to 32 Nm (0.32 Kg-m, 24 ft-lb).
6. Before starting motorcycle, check for proper clearance between new exhaust system and rear suspension (i.e. tire, swing arm, brakes, rear shock, and etc.) If any problem is found, please carefully follow through the installation steps again. If problem still persists, please call Yoshimura Tech Department at (800) 634-9166 / in CA (909) 628-4722.

7. It is recommended that the muffler and tailpipe be wiped down with rubbing alcohol to remove oil and fingerprints. This will help prevent tarnishing of the finish after the exhaust is heated up.

Note: After starting motorcycle, it is normal for new exhaust system and muffler to emit smoke until oil residue burns off.