



PERFORMANCE EXHAUST SYSTEM

EPA NOISE COMPLIANT

APPLICATION

YEAR	MODEL
2010-2012	BMW R1200GS

PRODUCT

15000E5200	RS3 Stainless Steel Slip-On Exhaust System with Carbon Fiber Sleeve
15000E5500	RS3 Stainless Steel Slip-On Exhaust System with Stainless Steel Sleeve
15000E5700	RS3 Stainless Steel Slip-On Exhaust System with Titanium Sleeve



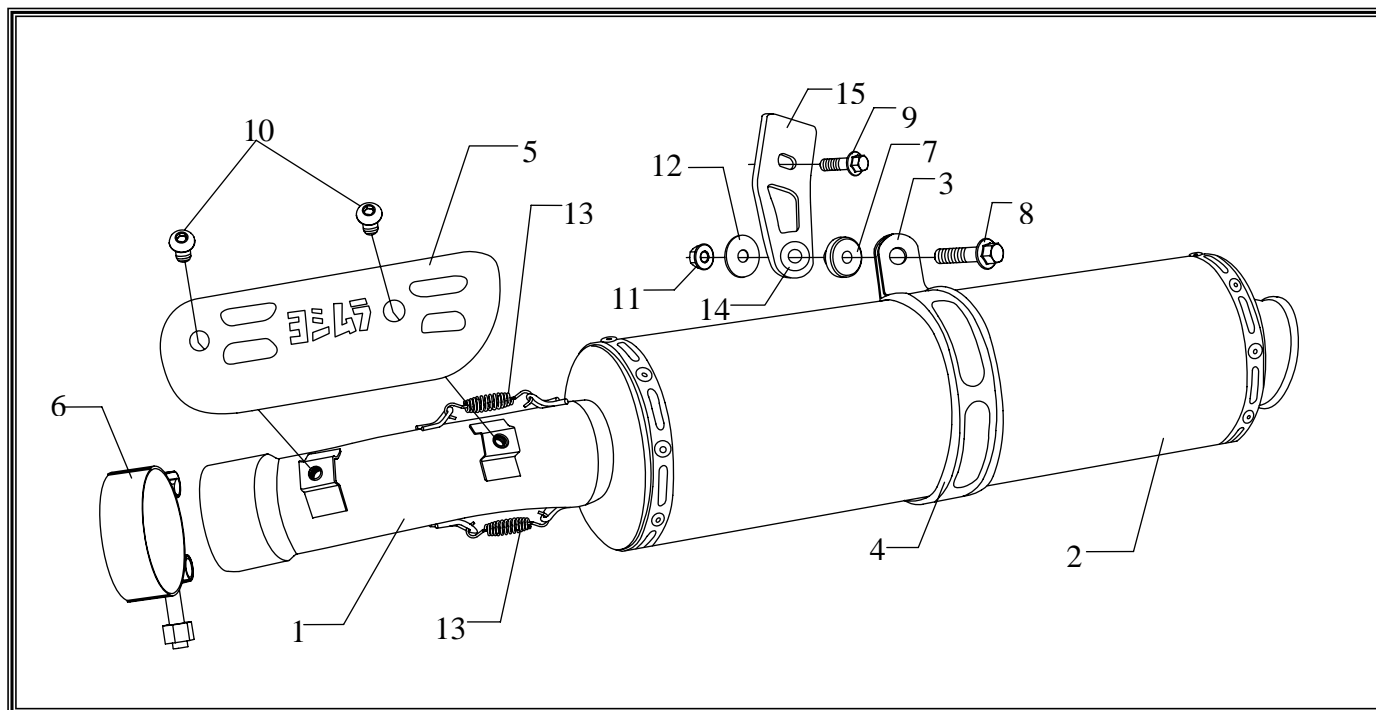
This product is 50-state legal and complies with Federal and State regulations. Any attempts to modify this product will render it non-compliant with Federal law and void warranty. If modified, the vehicle can no longer be used on public roads and can only be used for off-highway closed course competition. In the state of California, it is illegal to modify the emission control system, which includes the fuel injection system of any vehicle.



You must know how to remove and replace your stock exhaust in order to install this product otherwise have it installed by a professional mechanic. Keep all stock parts from your existing system as some components may be necessary to install your new Yoshimura exhaust depending on the application.



Read through all instructions before beginning installation. Exhaust system can be extremely hot. Let motorcycle cool down before beginning installation. Always wear hand and eye protection and take precautionary measures to avoid injury.



No.	Part #	Description	Qty
1	15000-435	Yoshimura Tailpipe	1
2	N/A	Yoshimura Muffler	1
3	COS450S8AL COS450S8ALX	Muffler Clamp CF Sleeve SS/Ti Sleeve	1
4	HT SHLDTRS	Muffler Clamp Heat Shield	1
5	15000-HS	Tailpipe Heat Shield	1
6	20069	Exhaust Clamp	1
7	ALS-002	Aluminum Spacer	1
8	M8X35H	8mm x 35mm Bolt	1

9	M8X16H	8mm x 16mm Bolt	1
10	RC116HSB	6mm x 8mm Button Head Screw	2
11	8MMNUT	8mm Nut	1
12	8MMWASHERL	8mm Large Washer	1
13	RACE-SPX-1	Short Spring	2
14	Z1022	Rubber Grommet	1
15	15000-BRKT	Muffler Hanger Bracket	1
**	ST-200	Spring Puller	1
**	17029	Yoshimura Sticker Sht.	1

-TOOLS REQUIRED-

Metric Socket Set • Combination Wrench Set • Torque Wrench • Torx Socket Set

-REMOVAL-

1. Removing the stock muffler.

- a) Loosen exhaust clamp.**
- b) While securely supporting the muffler, remove the muffler mount bolt.**
- c) Carefully remove stock muffler assembly.**

-INSTALLATION-

1. Small parts installation.

- a) Install provided rubber grommet and spacer onto muffler mount bracket.**
- b) Install Yoshimura muffler mount bracket using the supplied hardware.**
- c) Install muffler clamp heat shield. (Note: Some trimming may be required.)**
- d) Slide muffler clamp onto muffler.**

2. Installing the Yoshimura Slip-On System.

- a) Install exhaust clamp provided in the kit over Yoshimura tailpipe. Do not torque at this time.**
- b) Install Yoshimura tailpipe over stock midpipe. (Note: Some twisting of tailpipe and/or muffler may be required to align muffler mount holes. Remove springs if necessary.)**
- c) Bolt muffler clamp to muffler mount bracket. See diagram for orientation.**
- d) Torque exhaust clamp to 10lb-ft. (1.3kg-m, 13Nm)**
- e) Torque muffler mount bolt to 10lb-ft. (1.3kg-m, 13Nm)**
- f) Install Yoshimura heat shield.**

3. Fitment check and Notes.

- a) Before starting motorcycle, check for proper clearance between new exhaust system and rear suspension (i.e. tire, swing-arm, brake, rear shock, engine, and etc.) If any problem is found, please carefully follow through the installation steps again. If problem still persists, please call Yoshimura Tech Department at (800) 634-9166 / in CA (909) 628-4722.**
- b) It is recommended that the muffler and tailpipe be wiped down with rubbing alcohol to remove oil and fingerprints. This will help prevent tarnishing of the finish after the exhaust is heated up.**
- c) NOTE: After starting motorcycle, it is normal for new exhaust system and muffler to emit smoke until oil residue burns off.**

NOISE EMISSION WARRANTY

Yoshimura warrants that this exhaust system, at time of sale, meets all applicable U.S. E.P.A. Federal noise standards. This warranty extends to the first person who buys this exhaust system for purposes other than resale, and to all subsequent buyers. Warranty claims should be directed to Yoshimura R&D of America, Inc.
5420 Daniels St. Chino, CA 91710 | Tel (800) 634-9166

TAMPERING PROHIBITION

Federal law prohibits any modification to this exhaust system which causes the motorcycle to exceed the Federal noise standard. Use of the motorcycle with such a modified exhaust system is also prohibited.

Acts likely to constitute tampering include removal or puncturing the muffler, baffles, header pipes, or any other component which conducts exhaust gases.

WARNING: This product should be checked for repair or replacement if the motorcycle noise has increased significantly through use. Otherwise, the owner may become subject to penalties under state and local ordinances.