



# YOSHIMURA

RESEARCH&DEVELOPMENT OF AMERICA, INC.

5420 DANIELS STREET STE A, CHINO CA 91710 · (800) 634-9166 · (909) 628-4722 · FAX (909) 591-2198

WWW.YOSHIMURA-RD.COM

## **RACE SERIES**

**Qualified Manufacturer Declared "Modified Part"**

**2013~2017  
Kawasaki Ninja 300  
14701AP520 (SS/CF)**

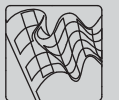
**Works Finish  
Alpha Stainless Steel Full-System**

**FOR CLOSED COURSE COMPETITION ONLY; NOT INTENDED FOR STREET USE**



Race Series systems are:

- NOT CARB/EPA tail-pipe emissions compliant.
- NOT street legal.
- For "Closed Course Competition" use only.

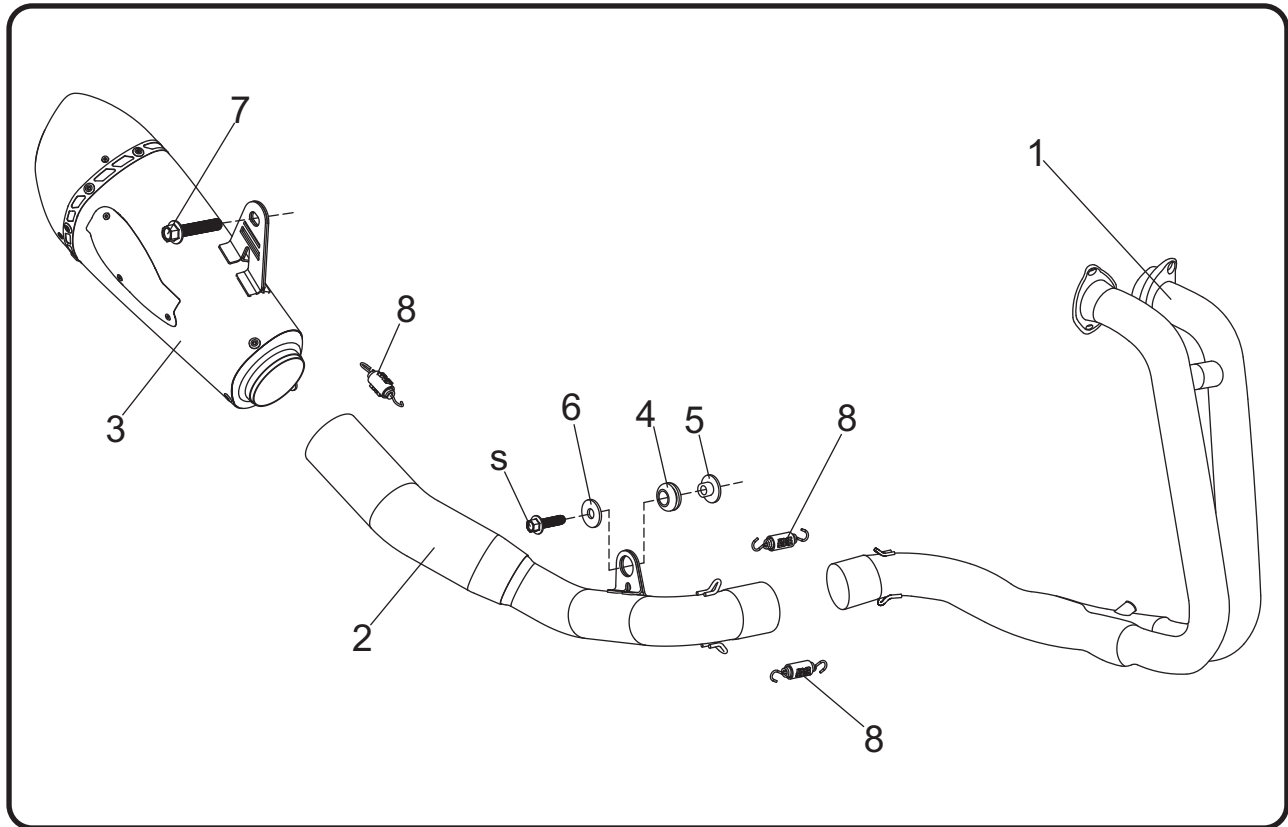


*You must know how to remove and replace your stock exhaust in order to install this product otherwise have it installed by a professional mechanic. Keep all stock parts from your existing system as some components may be necessary to install your new Yoshimura exhaust depending on the application. Read through all instructions before beginning installation. Exhaust system can be extremely hot. Let motorcycle cool down before beginning installation. Always wear hand and eye protection and take precautionary measures to avoid injury.*



NOTE: IN THE STATE OF CALIFORNIA, IT IS ILLEGAL TO MODIFY THE EMISSION CONTROL SYSTEM, WHICH INCLUDES THE CARBURETORS OF ANY VEHICLE.

## Assembly Diagram



No.	Item	Description	Qty.
1	14701-401D	Yoshimura Header	1
2	14701-421D	Yoshimura Tailpipe	1
3	14701BP520-RMA	Yoshimura Muffler Assembly	1
4	Z1022	Grommet	1
5	ALS-002	Aluminum Spacer	1
6	8MMWASHERL	8mm Large Washer	1
7	M10X50H	10mm x 50mm Flanged Hex Head Bolt	1
8	RACE-SPS-1	Medium Exhaust Spring	3
**	M18X13PLG	O2 Sensor Plug	1
**	INS-27-K	Low Volume Sound Insert	1
**	ST-200	Spring Puller Tool	1
**	17029	Yoshimura Sticker Sheet	1

\*\* Not shown on diagram.

**CAUTION:** Exhaust system can be extremely hot. Let motorcycle cool down before beginning installation. Always wear hand and eye protection and take precautionary measures to avoid injury.

**WARNING:** Always properly support vehicle with a stand and/or lift when servicing or performing any work. Unstable vehicles may present dangerous conditions and may cause property damage and/or personal injury.

**NOTE:** Read through all instructions before beginning installation.

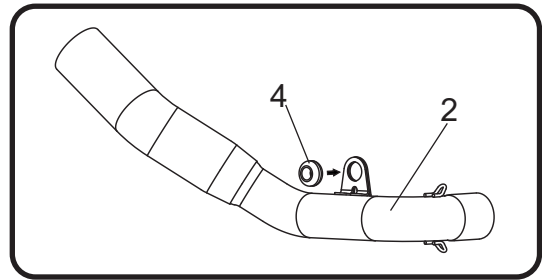
## Removal

1. Loosen muffler heatshield hose clamp. Remove muffler heatshield bolt and carefully remove muffler heatshield by sliding forward.
2. Loosen muffler exhaust clamp between header and muffler.
3. While securely supporting the stock muffler, remove the muffler mount bolt and carefully remove the stock muffler assembly.
4. Remove the left and right side lower cowling.
5. Remove O2 sensor from header for 2015~2017 models.
6. Remove the header chassis mount bolt.
7. While securely supporting the stock header, remove header nuts and carefully remove the stock header.

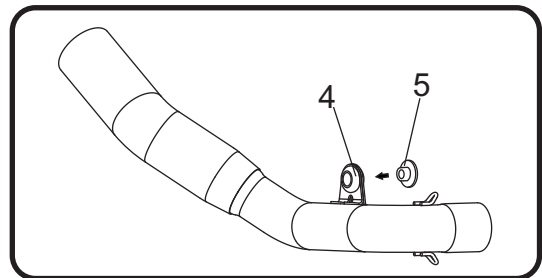
Note: The stock exhaust port gaskets will be used with the Yoshimura full-system. Inspect and replace if necessary.

## Installation

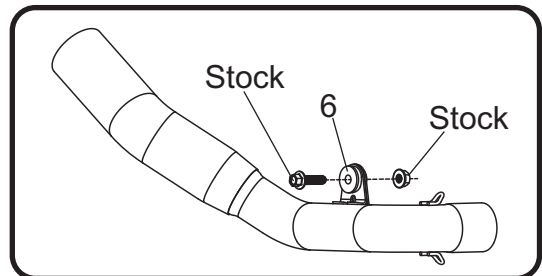
1. Install (No. 1) 14701-401D, Yoshimura header using the stock header nuts. Do not torque at this time.
2. Install (No. 4) Z1022, grommet into (No. 2) 14701-421D, tailpipe chassis mount bracket.



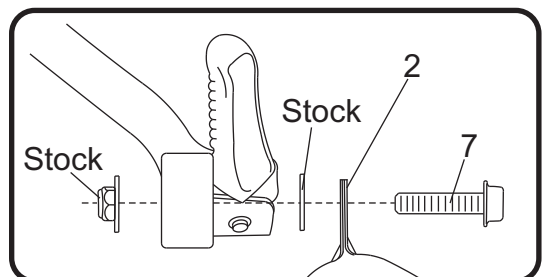
3. Install (No. 5) ALS-002, aluminum spacer into (No. 4) Z1022, grommet as shown.



4. Install (No. 2) 14701-421D, tailpipe inlet over (No. 1) 14701-401D, header outlet. Align tailpipe chassis mount to frame and secure using the stock tailpipe bolt, (No. 6) 8MMWASHERL, large washer, and stock nut as shown. Do not torque at this time.



5. Install (No. 3) 14701BP520-RMA, muffler onto (No. 2) 14701-421D, tailpipe outlet. Align muffler bracket to the frontside of the stock muffler mount and secure using (No. 7) M10X50H bolt, washer, and nut as shown.



6. Torque muffler mount bolt to factory specification.
7. Torque tailpipe chassis mount bolt to factory specification.

8. Torque header nuts to factory specification.
9. Install (No. 8) *RACE-SPS-1*, medium exhaust spring between header to tailpipe connection and muffler to tailpipe connection.
10. Re-install O2 sensor into Yoshimura header for 2015~2017 models. Torque to factory specification. For 2013~2014 models, install supplied O2 sensor plug.
11. Before starting vehicle, check for proper clearance between new exhaust system and rear suspension (i.e. tire, swingarm, brakes, rear shock, and etc.) If any problem is found, please carefully follow through the installation steps again. If problem still persists, please call Yoshimura Tech Department at (800) 634-9166 / in CA (909) 628-4722.
12. It is recommended that the muffler and tailpipe be wiped down with rubbing alcohol to remove oil and fingerprints. This will help prevent tarnishing of the finish after the exhaust is heated up.

Note: After starting vehicle, it is normal for new exhaust system and muffler to emit smoke until oil residue burns off.

## **Works Finish Care & Maintenance**

---

Before starting vehicle, clean pipe thoroughly using a soft cloth and rubbing alcohol to remove any oil and finger prints.

The color of the exhaust will change once the system has gone through a heat cycle of 15 minutes or more. Color will vary depending on lean/rich conditions.

Clean using a soft cloth and soap. Do not use abrasive materials as it will scratch the surface.

Surface reconditioning services are available to remove scratches and undesirable discoloration due to extreme heat. Contact Yoshimura Tech Department at (800) 634-9166 / in CA (909) 628-4722 for more information.