



# YOSHIMURA

RESEARCH & DEVELOPMENT OF AMERICA, INC.

5420 DANIELS STREET STE A, CHINO CA 91710 · (800)634-9166 · (909)628-4722 · FACSIMILE (909)591-2198

WWW.YOSHIMURA-RD.COM

## **OFF-ROAD PERFORMANCE EXHAUST SYSTEM** **Spark Arrested**

**Suzuki**  
**2005-2007**  
**RMZ-450**

**2190513**

STAINLESS STEEL FULL SYSTEM WITH ALUMINUM SLEEVE



**THIS PRODUCT IS DESIGNED FOR USE IN CLOSED COURSE  
RACING AND IS NOT INTENDED FOR ANY OTHER USE.**



**CAUTION:** The muffler packing on this system **MUST** be replaced every 6-8 hours of use, or after each moto. Failure to follow recommended muffler re-packing interval can cause muffler damage and may void the warranty.



NOTE: IN THE STATE OF CALIFORNIA, IT IS ILLEGAL TO MODIFY THE EMISSION CONTROL SYSTEM, WHICH INCLUDES THE CARBURETORS OF ANY VEHICLE.

**Caution:** Exhaust system can be extremely hot. Let motorcycle cool down before beginning installation.

**Note:** Read through all instructions before beginning installation.

## Tools Needed:

8mm, 10mm, and 12mm Sockets  
Ratchet Wrench and Extension  
Torque Wrench  
Spring Puller Tool

## Installation Steps:

- 1 Remove right rear number plate (see Fig. 1 for bolt locations).
- 2 Remove stock exhaust system and stock exhaust port gasket (see Fig. 2 and Fig. 3 for bolt locations).
- 3 Install new stock exhaust port gasket (not included).
- 4 Install Yoshimura header using stock header nuts. Do not tighten header nuts at this time.
- 5 Install supplied rubber grommet into aluminum muffler mounting bracket. Install aluminum insert into rubber grommet (make sure shoulder of aluminum insert faces toward the frame, see Fig. 4).
- 6 Install Yoshimura tailpipe and muffler onto Yoshimura header.
- 7 Install supplied muffler mount bolt and supplied washer. Install supplied chassis mount bolt. Leave loose.
- 8 Install Yoshimura heatshield using the supplied heatshield bolts and clips (see Parts Diagram on page 4).

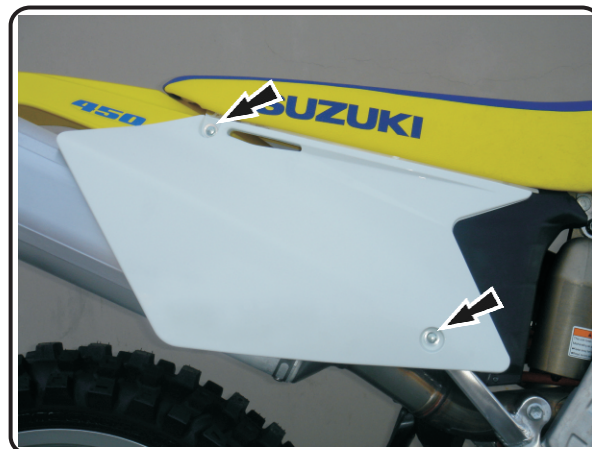


Fig. 1



Fig. 2

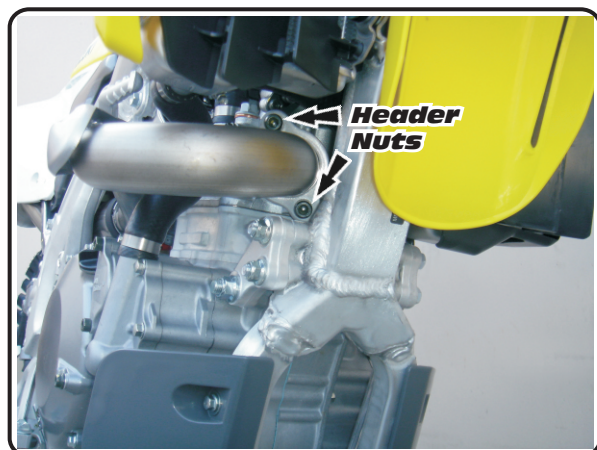


Fig. 3

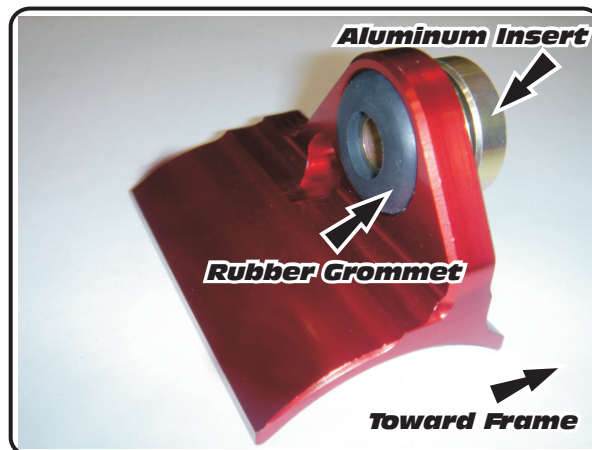
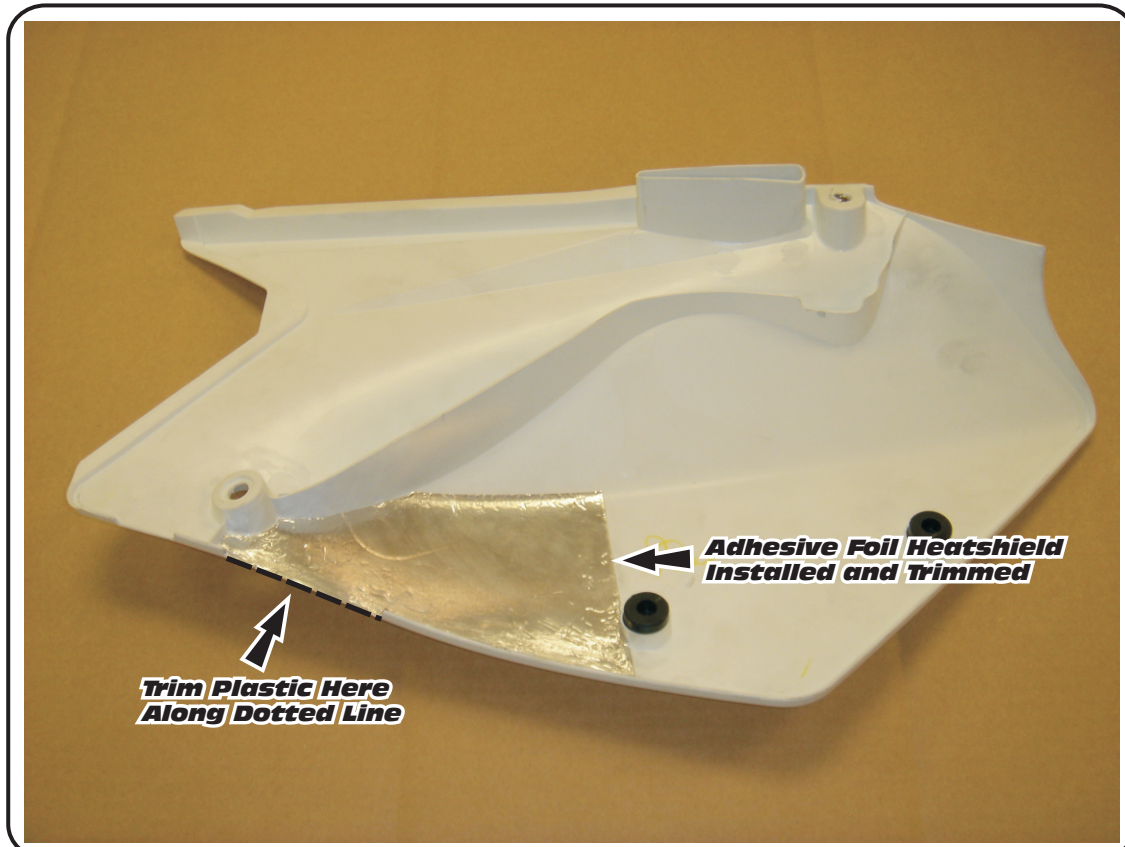


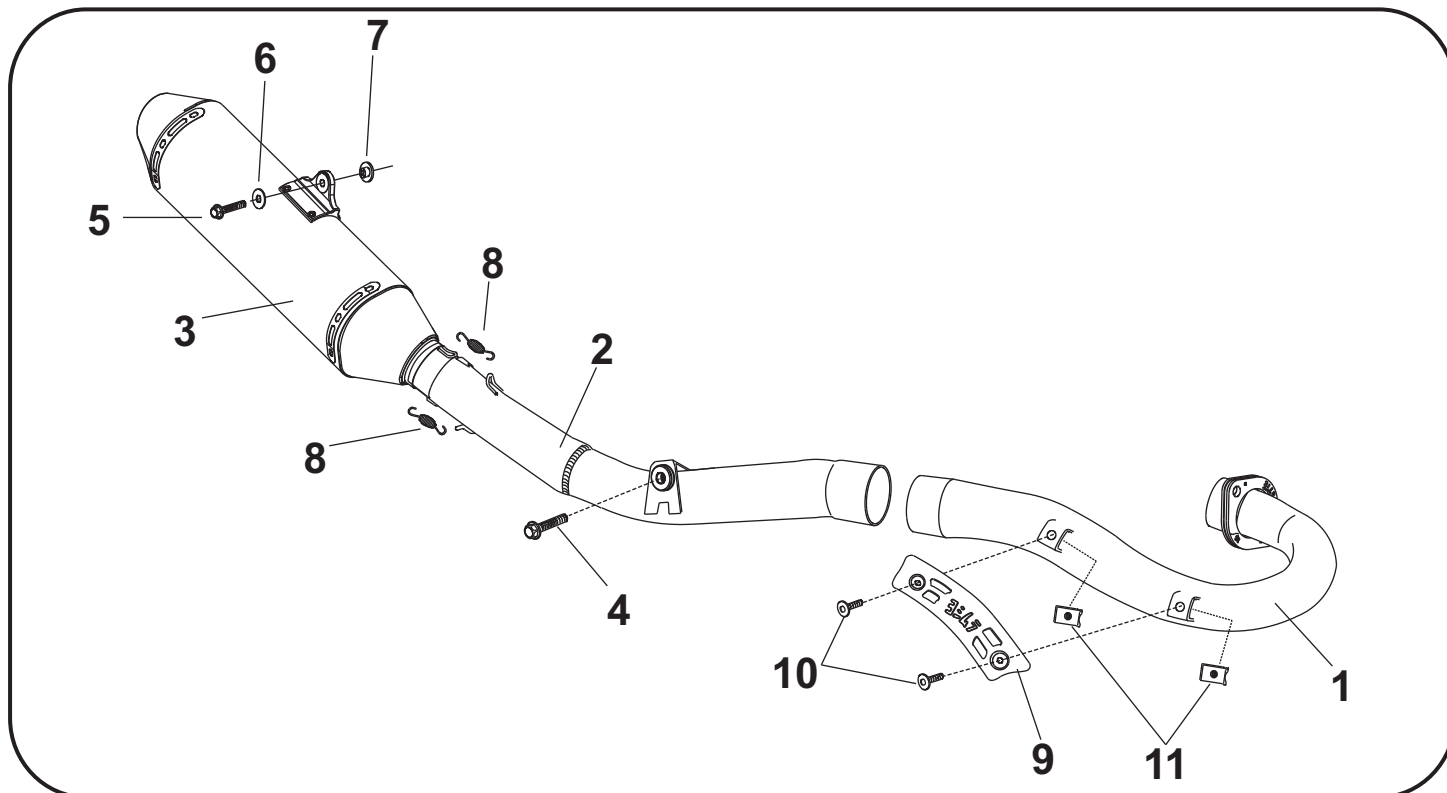
Fig. 4

**Fig. 5**

- 9 Check exhaust for proper position and clearance and adjust if necessary.
  - 10 Torque header nuts to 1.0 kg-m (7.3 lb-ft).
  - 11 Torque muffler mount bolt to 2.5 kg-m (18 lb-ft).
  - 12 Torque chassis mount bolt to 2.5 kg-m (18 lb-ft).
  - 13 It is recommended that the muffler and tailpipe be wiped down with rubbing alcohol to remove oil and fingerprints. This will help prevent tarnishing of the finish after the exhaust is heated up.
  - 14 Before starting motorcycle, check for proper clearance between new exhaust system and rear suspension (i.e. tire, swingarm, brake, rear shock, etc). If any problem is found, please carefully follow through the installation steps again. If problem still persists, please call Yoshimura tech department at (800) 634-9166 / in CA (909) 628-4722.
  - 15 Trim the number plate as shown in figure 5. The dotted line in figure 5 shows where the plastic must be cut.
  - 16 Apply adhesive foil heatshield to the inside of the number plate and trim off excess material as shown in figure 5.
- NOTE:** Your Yoshimura exhaust system has been designed with weight centralization in mind. Trimming of the number plate is required in order to move the muffler as far forward as possible.
- 17 Reinstall number plate.

**NOTE:** After starting motorcycle, it is normal for new exhaust system and muffler to emit smoke until oil residue burns off.

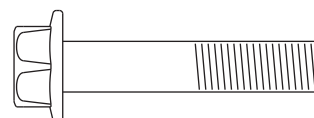
**#2190513**



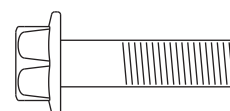
Parts Diagram

NO.	DESCRIPTION	QTY	PART #
1	Yoshimura Header	1	2190-101
2	Yoshimura Tailpipe	1	2190-144-A
3	Yoshimura Race Muffler with Aluminum Sleeve	1	2190513-RMA
4	8mm x 25mm Flange Bolt	1	M8X25H
5	8mm x 35mm Flange Bolt	1	M8X35H
6	8mm Large Washer	1	8MMWASHERL
7	Aluminum Insert for Rubber Grommet	1	ALS-002
8	Medium Exhaust Spring	2	RACE-SPS-1
9	Yoshimura Header Heatshield	1	2190-HS
10	Heatshield Bolts	2	M6X12BHS
11	Heatshield Mounting Clips	2	M6X1U
**	Adhesive Foil Heatshield	1	2255-00-01
**	Spring Puller Tool	1	ST-200
**	Muffler Mount Rubber Grommet	1	Z1022
**	Yoshimura Vinyl Sticker	2	17028-BLK

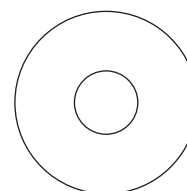
**Nuts and Bolts Guide (Actual Size):**



8mm x 35mm  
Flange Hex Bolt



8mm x 25mm  
Flange Hex Bolt



8mm Large Flat Washer





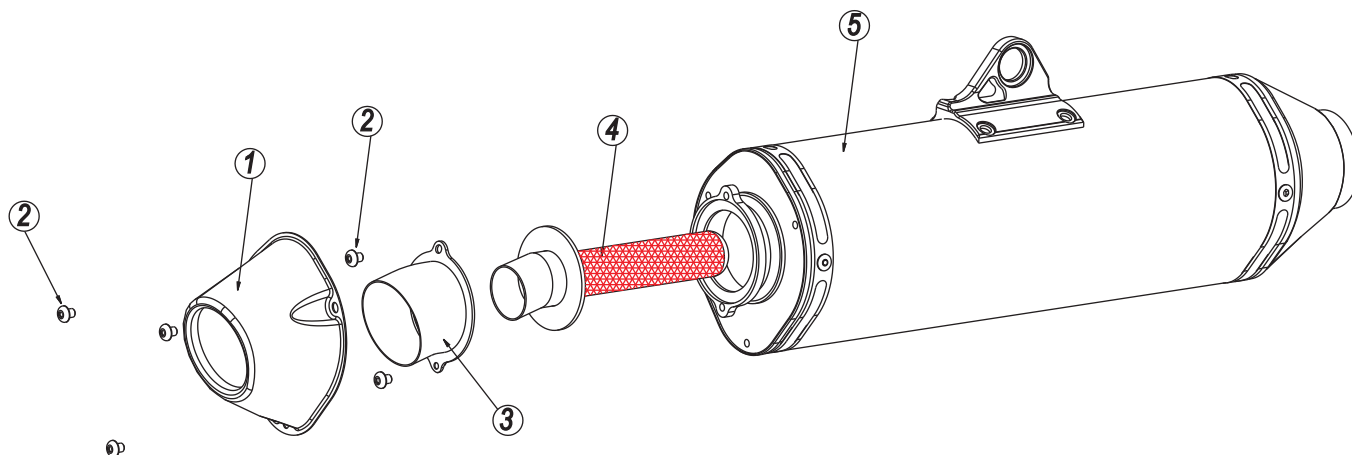
# YOSHIMURA

RESEARCH&DEVELOPMENT OF AMERICA, INC.

5420 DANIELS STREET SUITE A, CHINO, CA 91710 · (800)634-9166 · (909)628-4722 · FACSIMILE (909)591-2198

[www.yoshimura-rd.com](http://www.yoshimura-rd.com)

## Spark Arrester Cleaning Information



Parts Diagram

**Caution:** *Muffler can be extremely hot. Let muffler cool down before removing spark arrester.*

**Note:** *Read through all instructions before beginning disassembly.*

NO.	DESCRIPTION	QTY
1	Cone Cap	1
2	5mm x 10mm Button Head Bolt	5
3	Exhaust Tip	1
4	Spark Arrester	1
5	Muffler Assembly	1

### Tools Needed:

3mm Allen Key  
Wire Brush  
Pair of Gloves  
Safety Glasses

### Cleaning Steps:

- 1 Using a 3mm Allen key, remove the three 5mm x 10mm button head bolts that secure the cone cap to the muffler (see Parts Diagram for location).
- 2 Remove the two 5mm x 10mm button head bolts that secure the spark arrester to the muffler. Remove the spark arrester from the muffler.

- 3 Using a wire brush, remove carbon deposits from spark arrester screen. Inspect the screen for excessive wear or damage. If spark arrester is excessively worn or damaged, the spark arrester must be replaced. Cleaning and inspection should be performed after every 60 hours of use.

**CAUTION:** *Gloves and Safety Glasses should be worn while cleaning spark arrester.*

- 4 Re-install spark arrester and cone cap. Torque the 5mm x 10mm bolts to 1.0 kg-m (7.3 lb-ft).

**NOTE:** *It is recommended that a low strength "Loc-tite" is used on the 5mm x 10mm bolts.*