



# YOSHIMURA

RESEARCH&DEVELOPMENT OF AMERICA, INC.

5420 DANIELS STREET STE A, CHINO CA., 91710 · (800)634-9166 · (909)628-4722 · FACSIMILE (909)591-2198

[www.yoshimura-rd.com](http://www.yoshimura-rd.com)

## **PERFORMANCE EXHAUST SYSTEM** **Polaris RZR XP1000**

**3920120500**  
**R77 Slip-On Exhaust System**



**THIS PRODUCT IS DESIGNED FOR USE IN CLOSED COURSE RACING AND IS NOT INTENDED FOR ANY OTHER USE.**

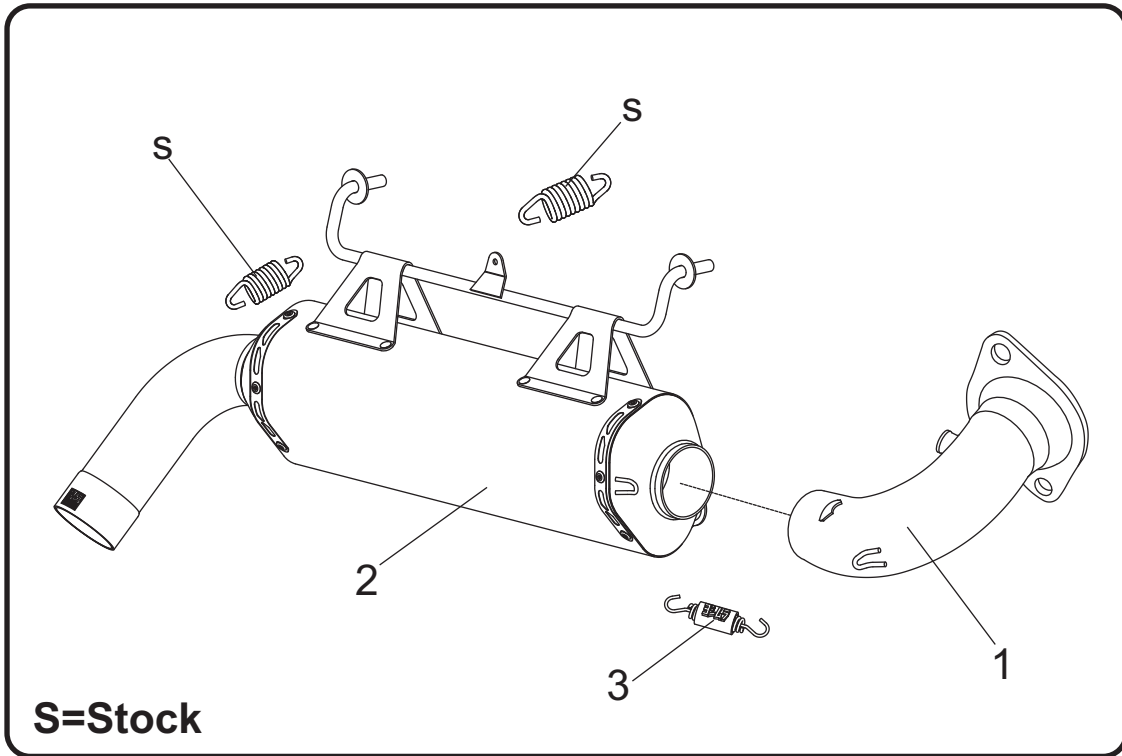


*To maintain maximum sound and engine performance, the muffler packing may need to be replaced at some time during the muffler's life. Failure to maintain the muffler packing may cause damage to the muffler and/or void the warranty. Regularly inspect the muffler body for discoloration, cracks, rattling, or other signs of wear caused by depleted muffler packing. If muffler packing is determined to be depleted or worn, a muffler re-pack kit is highly recommended to restore the muffler to optimum performance. Spark arrestor and muffler inspections should be performed at the same time.*



NOTE: IN THE STATE OF CALIFORNIA, IT IS ILLEGAL TO MODIFY THE EMISSION CONTROL SYSTEM, WHICH INCLUDES THE CARBURETORS OF ANY VEHICLE.

## Assembly Diagram



No.	Item	Description	Qty.
1	39201-152	Yoshimura Tailpipe	1
2	3920120500-RMA	Yoshimura Muffler Assembly	1
3	RACE-SPS-1	Medium Spring	1
**	347PLUG	Wash Plug	1
**	ST-200	Spring Puller Tool	1
**	17029	Sticker Kit Sheet	1

## Removal

1. Remove the (4) torx screws securing heatshield onto muffler heatshield bracket.
2. Remove the stock muffler heatshield.

Note: If aftermarket bumper or rollcage is installed, there may be difficulty removing the stock muffler heatshield. Removal or disassembly of the aftermarket bumper or rollcage may be required in order to remove the heatshield and muffler.

3. Remove the (2) springs securing the stock muffler to chassis. One spring is located on the left side of the muffler and the second spring is located on the top center of the muffler.
4. Remove O2 sensor from the muffler tailpipe.
5. Remove the (2) muffler bolts securing muffler assembly to header.

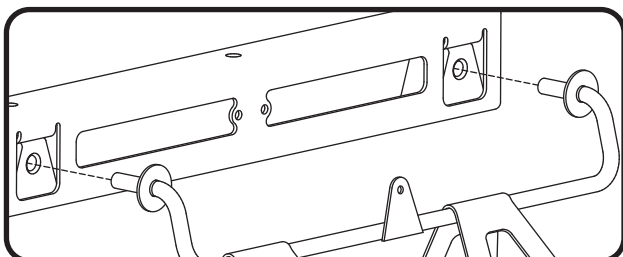
Note: Take precaution when removing muffler bolts as they are under spring tension.

6. Carefully remove the stock muffler assembly by sliding the two muffler hanger pins out toward the rear of the vehicle.

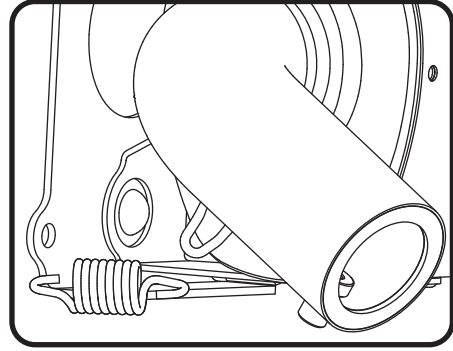
Note: The stock exhaust gasket will be re-used with the Yoshimura slip-on system. Inspect and replace gasket if necessary.

## Installation

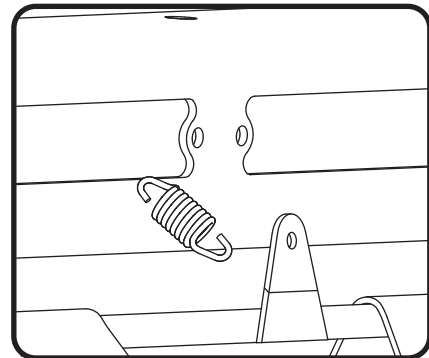
1. Install Yoshimura tailpipe into Yoshimura muffler assembly.
2. Align tailpipe inlet to header outlet and install Yoshimura muffler assembly by sliding the muffler hanger pins into the stock muffler mount location.



3. Install the stock spring onto chassis and spring hook located on muffler endcap.

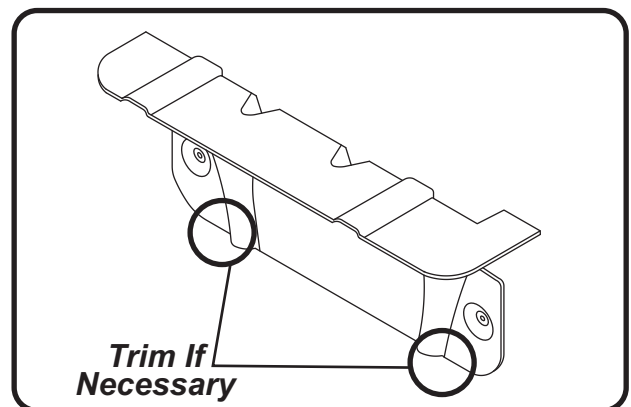


4. Install stock spring onto chassis and spring hook tab located in the center of the muffler hanger.



5. Install the (2) stock muffler bolts and tighten simultaneously for even spring tension. Torque to factory specification.

Note: Check for proper clearance between the Yoshimura left / right lower muffler stopper brackets and the factory aluminum heatshield. Due to the factory heatshield tolerance, it may be required to cut or grind the factory heatshield as shown below.



6. Install provided exhaust spring between the muffler and tailpipe.

7. Install the stock O2 sensor into Yoshimura tailpipe.
8. Re-install the stock muffler heatshield using the (4) stock torx screws.

Note: If aftermarket bumper or rollcage was removed, re-install using reverse steps of removal.

9. Before starting vehicle, check for proper clearance between new exhaust system and rear suspension (i.e. tire, control arm, brakes, rear shock, and etc.) If any problem is found, please carefully follow through the installation steps again. If problem still persists, please call Yoshimura Tech Department at (800) 634-9166 / in CA (909) 628-4722.
10. It is recommended that the muffler and tailpipe be wiped down with rubbing alcohol to remove oil and fingerprints. This will help prevent tarnishing of the finish after the exhaust is heated up.

Note: After starting vehicle, it is normal for new exhaust system and muffler to emit smoke until oil residue burns off.

## **IMPORTANT**

The Yoshimura system is pre-installed with a sound insert for best performance for closed course competition. Installation of the stock spark arrester is required if operated on designated OHV areas.