



# YOSHIMURA

RESEARCH & DEVELOPMENT OF AMERICA, INC.

5420 DANIELS STREET STE A, CHINO CA., 91710 · (800) 634-9166 · (909) 628-4722 · FAX (909) 591-2198

[www.yoshimura-rd.com](http://www.yoshimura-rd.com)

## *Signature Series*

Qualified Manufacturer Declared "Replacement Part"

**2009~2018**

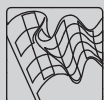
**Yamaha YFZ450R**

**2010**

**Yamaha YFZ450X**

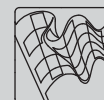
**2376513 (AL/SS)**

**RS-2 Stainless Steel Full-System**



Signature Series systems are:

- CARB/EPA tail-pipe emissions compliant.
- Marked with appropriate EPA noise labels.
- Independent laboratory tested for EPA new vehicle noise compliance.



**CAUTION:** The muffler packing on this system **MUST** be replaced every 6-8 hours of use, or after each moto. Failure to follow recommended muffler re-packing interval can cause muffler damage and may void the warranty.



NOTE: IN THE STATE OF CALIFORNIA, IT IS ILLEGAL TO MODIFY THE EMISSION CONTROL SYSTEM, WHICH INCLUDES THE CARBURETORS OF ANY VEHICLE.

**Caution:** Exhaust system can be extremely hot. Let motorcycle cool down before beginning installation.

**Note:** Read through all instructions before beginning installation.

## Tools Needed:

Metric Socket Set  
Metric Combination Set  
Ratchet and Extension  
#3 Phillips Screwdriver  
Torque Wrench  
Allen Key Set

## Installation Steps:

- 1 Unbolt and remove stock muffler, stock heatshield, stock header, and stock exhaust port gasket (see Fig. 1, 2, and 3 for bolt locations). Loosen and raise rear fender.
- 2 Install new stock exhaust port gasket (Yamaha Part # 2517380-001, not included).
- 3 Install Yoshimura header using stock header nuts. Leave header nuts loose so header can be adjusted for proper fitment.
- 4 Install supplied front heatshield onto Yoshimura header using supplied bolts (see Parts Diagram on page 4).
- 5 Install supplied rubber grommets into aluminum muffler mounting brackets. Install aluminum inserts into rubber grommets (make sure shoulder of aluminum insert faces toward the frame, see parts diagram).
- 6 Install Yoshimura tailpipe and muffler onto Yoshimura header.



Fig. 1



Fig. 2



Fig. 3

- 7 Mount muffler to chassis using supplied bolts, washers, and aluminum spacers (see Parts Diagram on Page 4).
- 8 Connect header to tailpipe using supplied exhaust spring with supplied spring puller tool.

**NOTE:** Due to extremely tight clearances between the Yoshimura exhaust tailpipe, stock frame and shock, the tailpipe may have to be rotated/twisted to obtain correct fitment and clearance. To adjust the tailpipe remove the springs retaining the muffler to the tailpipe and twist the tailpipe. It may be easier to do this with the muffler tailpipe assembly removed from the bike.

- 9 Torque stock header nuts to 16.5 lb-ft ( 23 N-m ).
- 10 Torque muffler mount bolts to 16.5 lb-ft ( 23 N-m ).
- 11 Install Yoshimura heat shields onto Yoshimura header and tailpipe using supplied bolts.
- 12 Tighten rear fender.
- 13 It is recommended that the entire exhaust system be wiped down with rubbing alcohol to remove oil and fingerprints. This will help prevent tarnishing of the finish after the exhaust is heated up.
- 14 Before starting motorcycle check for proper clearance between new exhaust system and motorcycle. (i.e. rear brake, frame, tire, etc.) If any problem is found, please carefully follow through the installation steps again. If problem still persists, please call Yoshimura tech department at (800)634-9166 / in CA (909)628-4722.

**NOTE:** After starting motorcycle, it is normal for new exhaust system and muffler to emit smoke until oil residue burns off.

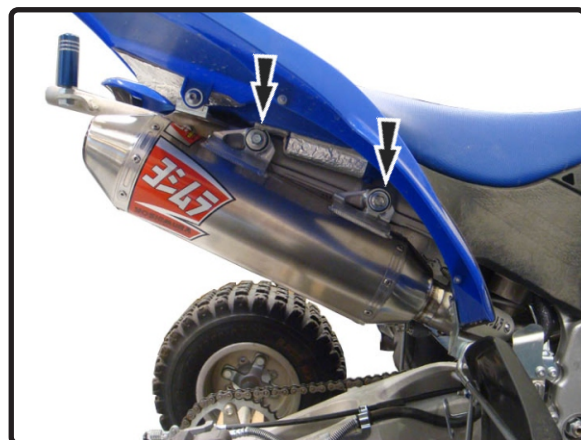


Fig. 4

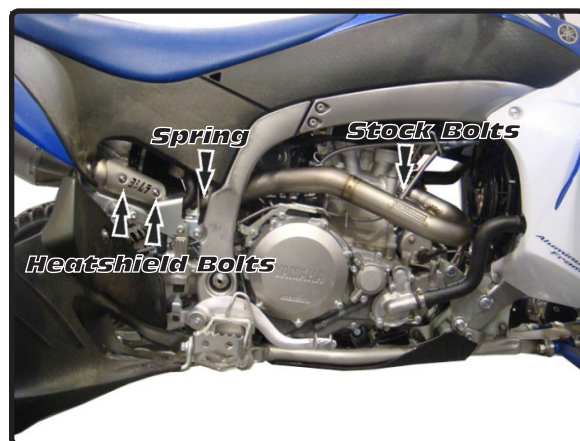
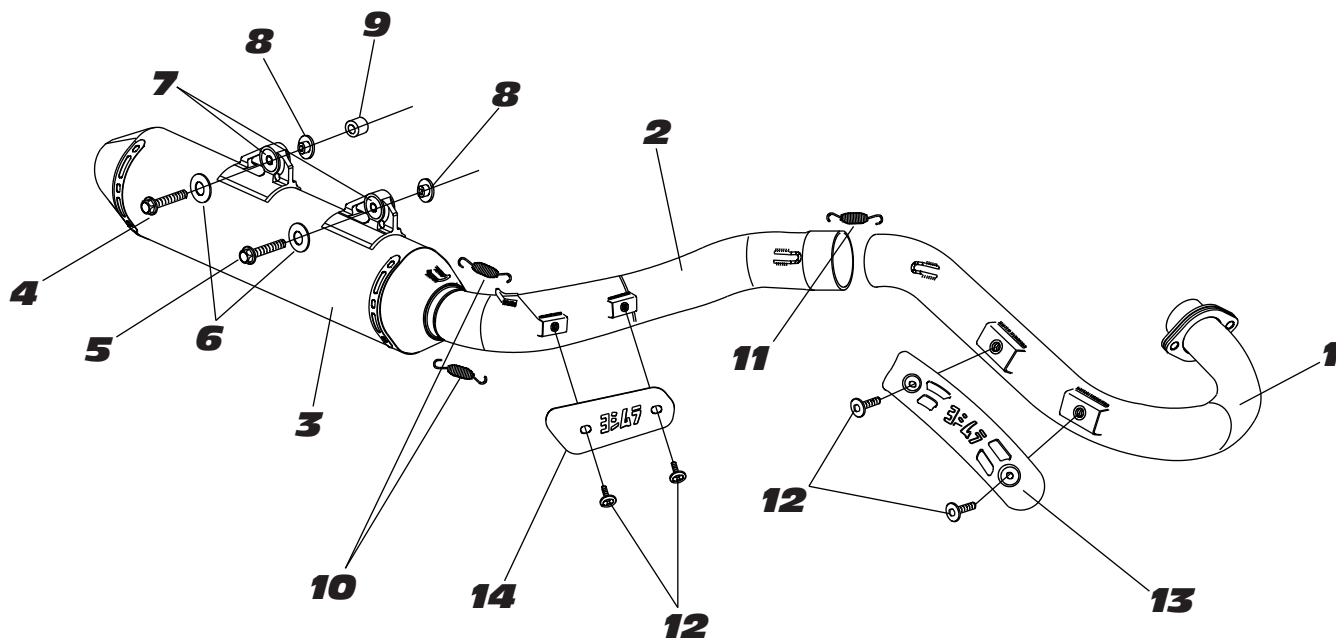


Fig. 5

**#2376513**

**S=STOCK**

Parts Diagram

NO.	DESCRIPTION	QTY	PART #
1	Yoshimura Stainless Steel Header	1	2376-101
2	Yoshimura Stainless Steel Tailpipe	1	2376-144
3	Yoshimura Race Muffler with Aluminum Sleeve	1	2376503-RMA
4	8mm X 45mm Flanged Hex Head Bolt	1	M8X45H
5	8mm X 35mm Flanged Hex Head Bolt	1	M8X35H
6	8mm Washer Large	2	8MMWASHERL
7	Rubber Grommet for Muffler Bracket	2	011257-00
8	Aluminum Spacer for Rubber Grommet	2	ALS-001
9	Aluminum Spacer	1	8X10SPC
10	Medium Exhaust Spring	2	RACE-SPS-1
11	Small Exhaust Spring	1	RACE-SPX-1
12	Heatshield Bolts	4	RC116HSB
13	Header Heatshield	1	2180-HS
14	Tailpipe Heatshield	1	2375-HS
**	Offroad Endcap Plug	1	347PLUG
**	Spring Puller Tool	1	ST-200
**	Yoshimura Vinyl Sticker	1	17029





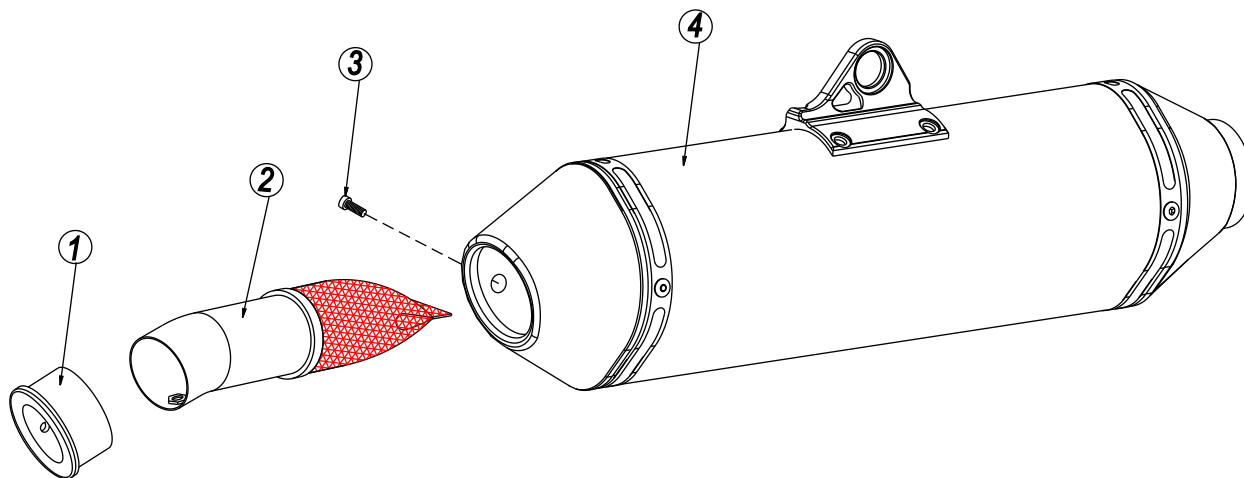
# YOSHIMURA

RESEARCH&DEVELOPMENT OF AMERICA, INC.

5420 DANIELS STREET SUITE A, CHINO, CA 91710 · (800)634-9166 · (909)628-4722 · FACSIMILE (909)591-2198

[www.yoshimura-rd.com](http://www.yoshimura-rd.com)

## Spark Arrester Cleaning Information



Parts Diagram

**Caution:** *Muffler can be extremely hot. Let muffler cool down before removing spark arrester.*

**Note:** *Read through all instructions before beginning disassembly.*

### Tools Needed:

4mm Allen Key  
Wire Brush  
Pair of Gloves  
Safety Glasses

### Cleaning Steps:

- 1 Using a 4mm Allen key, remove the bolt that secures the aluminum ring and spark arrester to the muffler (see Parts Diagram for location).
- 2 Remove the spark arrester from the muffler.

NO.	DESCRIPTION	QTY
1	Aluminum Ring	1
2	Spark Arrester	1
3	Spark Arrester Securing Bolt	1
4	Muffler Assembly	1

- 3 Using a wire brush, remove carbon deposits from spark arrester screen. Inspect the screen for excessive wear or damage. If spark arrester is excessively worn or damaged, the spark arrester must be replaced. Cleaning and inspection should be performed at the same time as muffler repacking. Repacking is recommended every 8-10 hours of riding or 2 motos, whichever comes first.

**CAUTION:** Gloves and safety glasses should be worn while cleaning spark arrester.

- 4 Re-install spark arrester and aluminum ring. Torque the spark arrester securing bolt to 1.0 kg-m (7.3 lb-ft).

**NOTE:** It is recommended that a low strength "Loc-tite" is used on the spark arrester securing bolt.