



YOSHIMURA

RESEARCH&DEVELOPMENT OF AMERICA, INC.

5420 DANIELS STREET STE A, CHINO CA., 91710 · (800) 634-9166 · (909) 628-4722 · FAX (909) 591-2198

www.yoshimura-rd.com

Signature Series

Qualified Manufacturer Declared "Replacement Part"

2008~2014

Kawasaki KFX450R

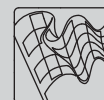
2415503 (SS/AL)

RS-2 Stainless Steel Full-System



Signature Series systems are:

- CARB/EPA tail-pipe emissions compliant.
- Marked with appropriate EPA noise labels.
- Independent laboratory tested for EPA new vehicle noise compliance.



CAUTION: The muffler packing on this system **MUST** be replaced every 6-8 hours of use, or after each moto. Failure to follow recommended muffler re-packing interval can cause muffler damage and may void the warranty.



NOTE: IN THE STATE OF CALIFORNIA, IT IS ILLEGAL TO MODIFY THE EMISSION CONTROL SYSTEM, WHICH INCLUDES THE CARBURETORS OF ANY VEHICLE.

Caution: Exhaust system may be extremely hot. Let motorcycle cool down before beginning installation.

Note: Read through all instructions before beginning installation.

Tools Needed:

Metric Socket Set
11mm (7/16") Deep Socket
Metric Allen Wrench Set
Ratchet Wrench and Extension
Spring Puller Tool

Installation Steps:

- 1 Remove stock exhaust system (see Fig. 1 and Fig. 2 for bolt locations).
- 2 Install supplied rubber grommet into muffler mounting bracket. Install aluminum insert into rubber grommet. Make sure that the shoulder of the aluminum insert faces toward the frame (see Fig. 3).
- 3 Remove stock exhaust port gasket and install new stock exhaust port gasket (not supplied).
- 4 Install Yoshimura header using stock header nuts. Do not tighten at this time.
- 5 Install Yoshimura tailpipe with muffler assembly onto Yoshimura header.
- 6 Bolt tailpipe to chassis mount using the supplied 16mm bolt. Do not tighten at this time.
- 7 Mount muffler to stock muffler mount location using the supplied 50mm bolt, 12mm spacer, and washer (see Parts Diagram on page 3).
- 8 Torque muffler mount and chassis mount bolt to 2.5 kg-m (18 lb-ft).
- 9 Torque header nuts to 1.25 kg-m (9 lb-ft).
- 10 Install Yoshimura heatshield onto Yoshimura header using the supplied bolts. (see Parts Diagram on page 3).
- 11 Remove stock rear heatshield from stock exhaust system and install onto Yoshimura tailpipe using the supplied bolt.
- 12 It is recommended that the muffler and tailpipe be wiped down with rubbing alcohol to remove oil and fingerprints. This will help prevent tarnishing of the finish after the exhaust is heated up.
- 13 Check for proper clearance between new exhaust system and rear suspension (i.e. tire, swing-arm, brake, etc). If any problem is found, please carefully follow through the installation steps again. If problem still persists, please call Yoshimura tech department at (800)634-9166.

NOTE: After starting motorcycle, it is normal for a new exhaust system and muffler to emit smoke until oil residue burns off.



Fig. 1

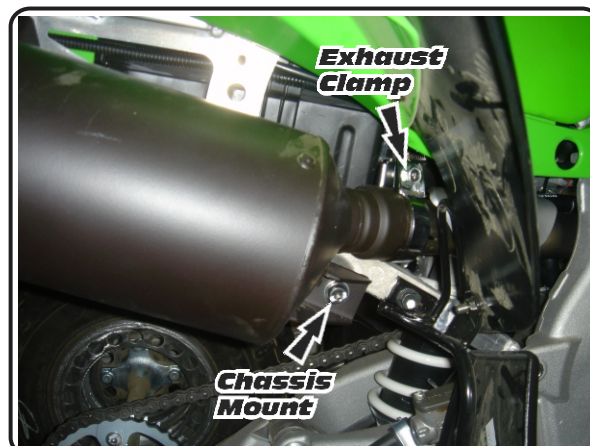


Fig. 2

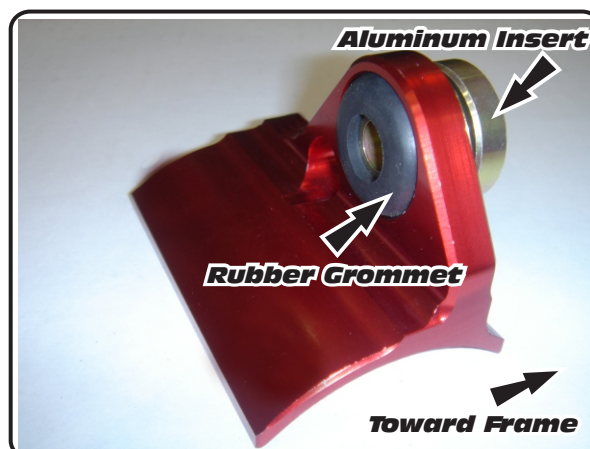
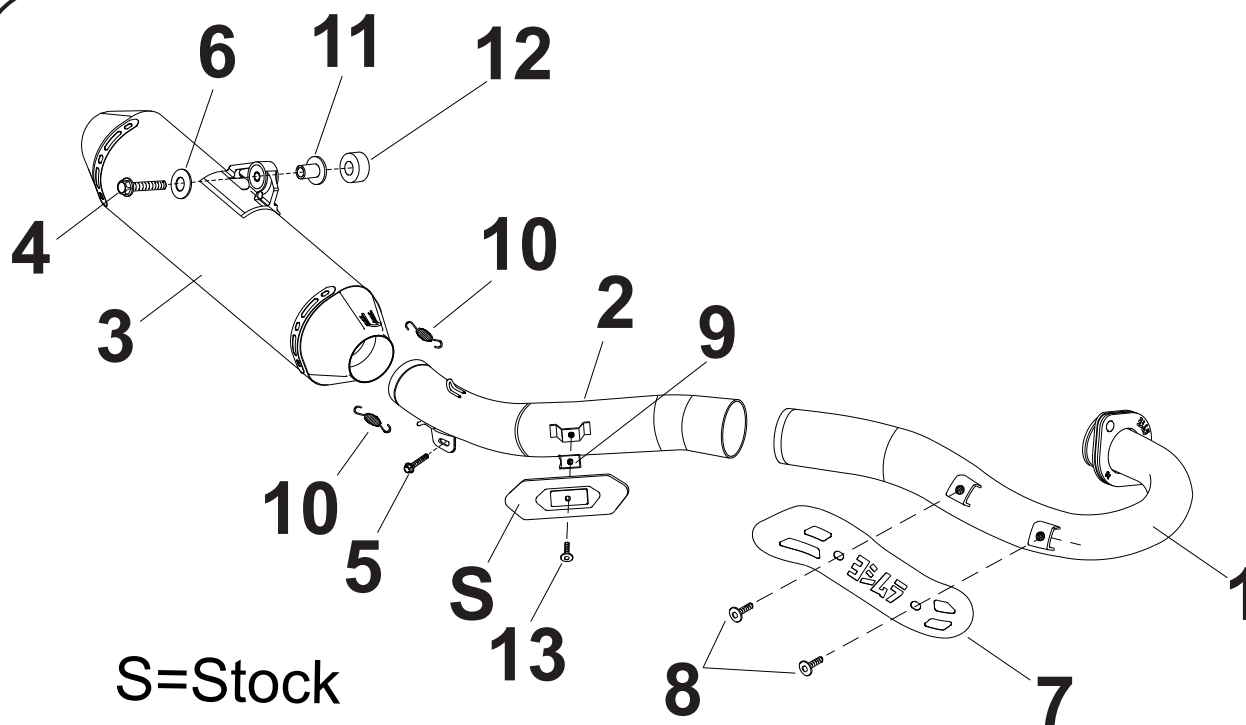


Fig. 3

#2415503 / #2415167

Parts Diagram

NO.	DESCRIPTION	QTY	PART #
1	Yoshimura Header Stainless Steel Competition Titanium Pro	1	2415-101 2415-701
2	Yoshimura Tailpipe Stainless Steel Competition Titanium Pro	1	2415-144 2415-744
3	Yoshimura Race Muffler with Aluminum Sleeve with Titanium Sleeve	1	2415503-RMA 2415167-RMA
4	8mm X 50mm Bolt	1	M8X50H
5	8mm X 16mm Bolt	1	M8X16H
6	Large 8mm Washer	1	8MMWASHERL
7	Yoshimura Heatshield	1	2190-HS
8	Heatshield Mounting Bolts	2	RC116HSB
9	Heatshield Mounting Clips	1	M6X1U
10	Medium Exhaust Springs	2	RACE-SPS-1
11	Aluminum Insert for Rubber Grommet	1	ALS-002
12	8mm x 12mm Aluminum Spacer	1	8X14SPC
13	6mm x 16mm Button Head Cap Screw	1	M6X16BHS
**	Rubber Grommet	1	Z1022
**	Yoshimura Spring Puller Tool	1	ST-200
**	Yoshimura Vinyl Sticker	1	17029



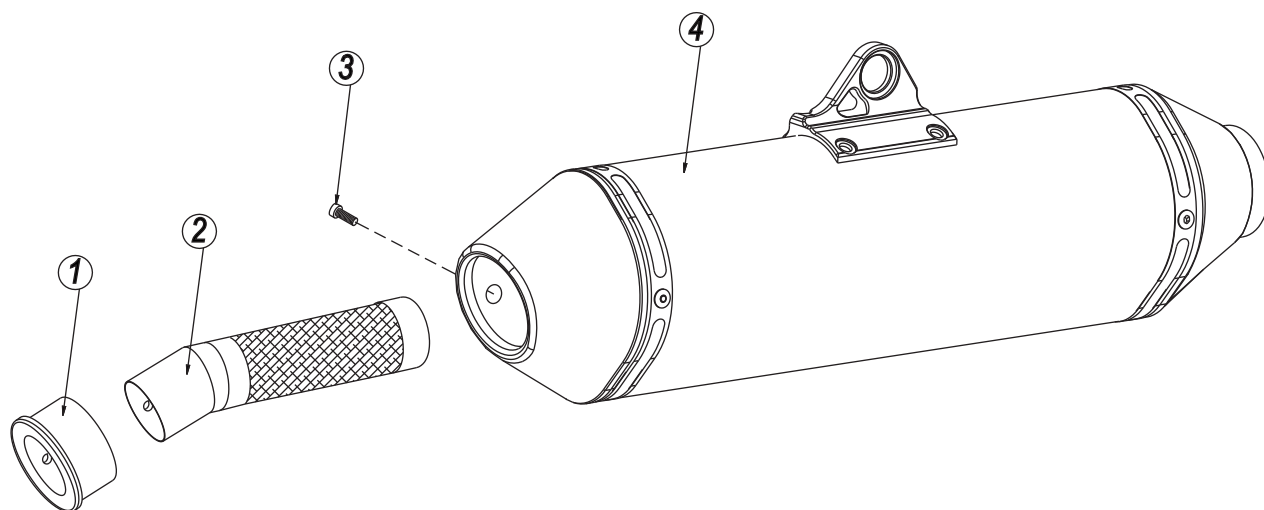
YOSHIMURA

RESEARCH & DEVELOPMENT OF AMERICA, INC.

5420 DANIELS STREET SUITE A, CHINO, CA 91710 · (800)634-9166 · (909)628-4722 · FACSIMILE (909)591-2198

www.yoshimura-rd.com

Spark Arrester Cleaning Information



Parts Diagram

Caution: *Muffler can be extremely hot. Let muffler cool down before removing spark arrester.*

Note: *Read through all instructions before beginning disassembly.*

Tools Needed:

3mm Allen Key
Wire Brush
Pair of Gloves
Safety Glasses

Cleaning Steps:

- 1 Using a 3mm Allen key, remove the bolt that secures the aluminum ring and spark arrester to the muffler (see Parts Diagram for location).
- 2 Remove the spark arrester from the muffler.

NO.	DESCRIPTION	QTY
1	Aluminum Ring	1
2	Spark Arrester	1
3	Spark Arrester Securing Bolt	1
4	Muffler Assembly	1

- 3 Using a wire brush, remove carbon deposits from spark arrester screen. Inspect the screen for excessive wear or damage. If spark arrester is excessively worn or damaged, the spark arrester must be replaced. Cleaning and inspection should be performed after every 60 hours of use.

CAUTION: *Gloves and safety glasses should be worn while cleaning spark arrester.*

- 4 Re-install spark arrester and aluminum ring. Torque the spark arrester securing bolt to 1.0 kg-m (7.3 lb-ft).

NOTE: *It is recommended that a low strength "Loc-tite" is used on the spark arrester securing bolt.*