



YOSHIMURA

RESEARCH & DEVELOPMENT OF AMERICA, INC.

5420 DANIELS STREET STE A, CHINO CA 91710 · (800) 634-9166 · (909) 628-4722 · FAX (909) 591-2198

WWW.YOSHIMURA-RD.COM

Signature Series

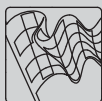
Qualified Manufacturer Declared "Replacement Part"

2006~2014

Honda TRX450R

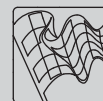
2276513 (SS/AL)

RS-2 Stainless Steel Full-System



Signature Series systems are:

- CARB/EPA tail-pipe emissions compliant.
- Marked with appropriate EPA noise labels.
- Independent laboratory tested for EPA new vehicle noise compliance.



CAUTION: The muffler packing on this system **MUST** be replaced every 6-8 hours of use, or every 1-2 motos. Failure to follow recommended muffler re-packing interval can cause muffler damage and may void the warranty.



NOTE: IN THE STATE OF CALIFORNIA, IT IS ILLEGAL TO MODIFY THE EMISSION CONTROL SYSTEM, WHICH INCLUDES THE FUEL INJECTION OF ANY VEHICLE.

Caution: Exhaust system can be extremely hot. Let motorcycle cool down before beginning installation.

Note: Read through all instructions before beginning installation.

Tools Needed:

12mm Socket
Ratchet and Extension
5mm Allen Wrench
Torque Wrench

Installation Steps:

- 1 Unbolt and remove stock muffler, stock heatshield, stock header, and stock exhaust port gasket (see Fig. 1 and 2 for bolt locations).
- 2 Install new stock exhaust port gasket (not included).
- 3 Install Yoshimura header using stock header nuts. Leave header nuts loose so header can be adjusted for proper fitment.
- 4 Install stock front heatshield onto Yoshimura header using supplied washer, bolts and heatshield mounting clips (see Parts Diagram on page 4).
- 5 Install supplied rubber grommet into aluminum muffler mounting bracket. Install aluminum insert into rubber grommet (make sure shoulder of aluminum insert faces toward the frame, see Fig. 3).
- 6 Remove stock rubber grommet and stock metal insert from subframe and install supplied aluminum spacers (2276-SPCB) into subframe.
- 7 Install Yoshimura tailpipe and muffler onto Yoshimura header.
- 8 Mount muffler to stock muffler and chassis mount locations using supplied bolts, washers, and spacers (see Parts Diagram on Page 4).



Fig. 1

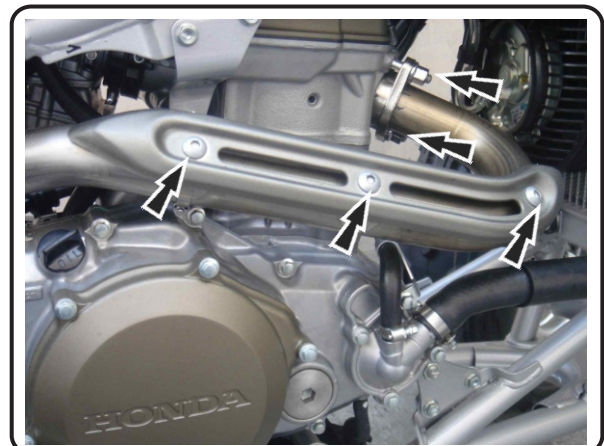


Fig. 2

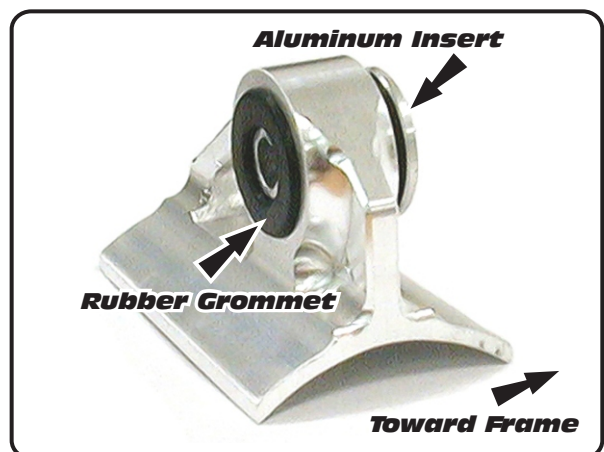
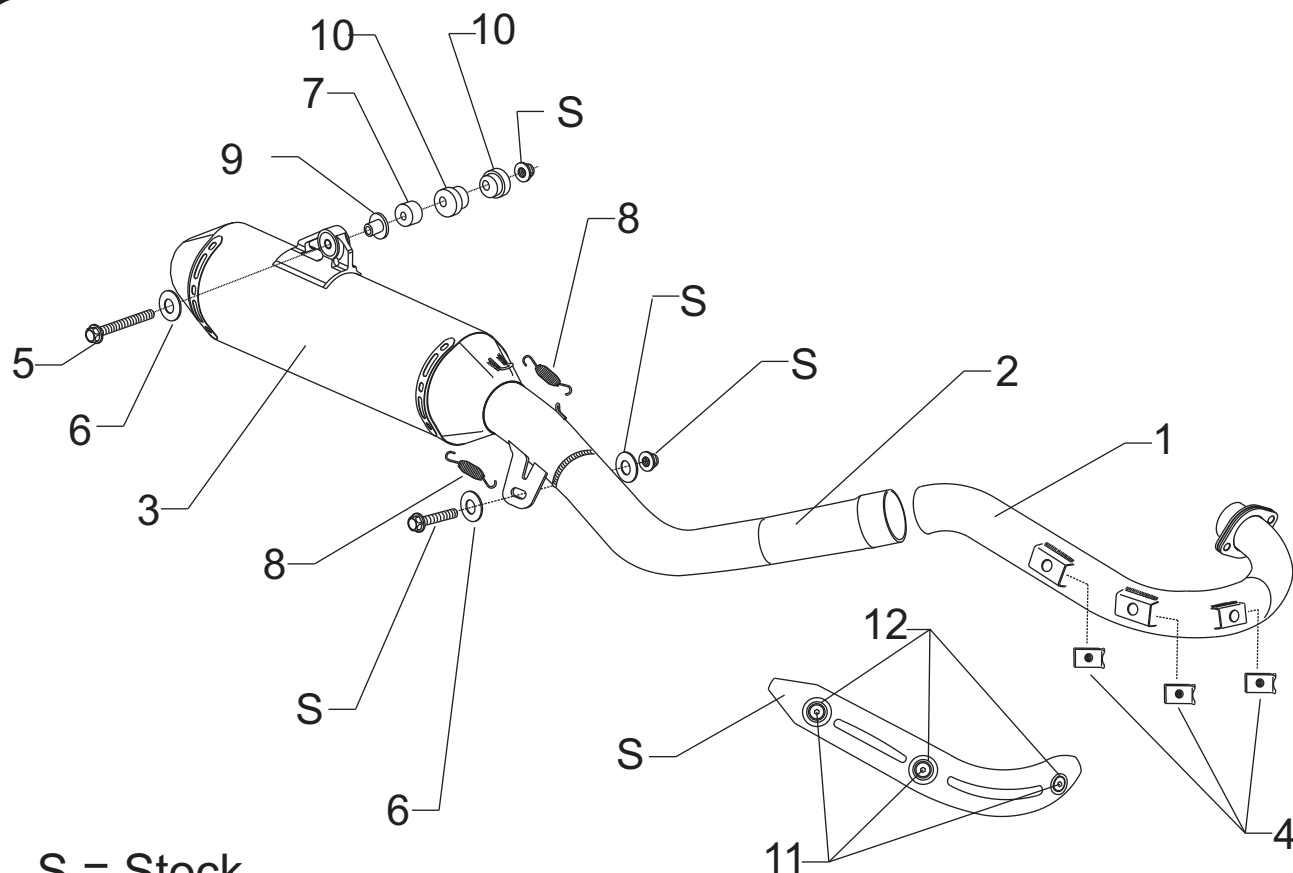


Fig. 3

- 9 Torque stock header nuts factory specification.
- 10 Torque muffler mount and chassis mount bolts to factory specification.
- 11 It is recommended that the entire exhaust system be wiped down with rubbing alcohol to remove oil and fingerprints. This will help prevent tarnishing of the finish after the exhaust is heated up.
- 12 Before starting motorcycle check for proper clearance between new exhaust system and motorcycle (i.e. rear brake, frame, tire, etc.). If any problem is found, please carefully follow through the installation steps again. If problem still persists, please call Yoshimura technical department at (800)634-9166 / in CA (909)628-4722.

NOTE: After starting motorcycle, it is normal for new exhaust system and muffler to emit smoke until oil residue burns off.

#2276513


S = Stock

Parts Diagram

NO.	DESCRIPTION	QTY	PART #
1	Yoshimura Stainless Steel Header	1	2276-101
2	Yoshimura Stainless Steel Tailpipe	1	2276-144-A
3	Yoshimura Race Muffler with Aluminum Sleeve	1	2276513-RMA
4	Heatshield Mounting Clips	3	M6X1U
5	8mm x 100mm Flange Hex Bolt	1	M8X100H
6	Large Washer	2	8MMWASHERL
7	8mm x 22mm Aluminum Spacer	1	8X22SPC
8	Medium Exhaust Spring	2	RACE-SPS-1
9	Aluminum Insert	1	ALS-001
10	Aluminum Insert for Stock Subframe	2	2276-SPCB
11	6mm x 12mm Button Head Screw	3	M6X12BHS
12	6mm Washer	3	6MMWASHER
**	Spring Puller Tool	1	ST-200
**	Rubber Grommet for Muffler Mount	1	011257-00
**	Yoshimura Vinyl Sticker	1	17029



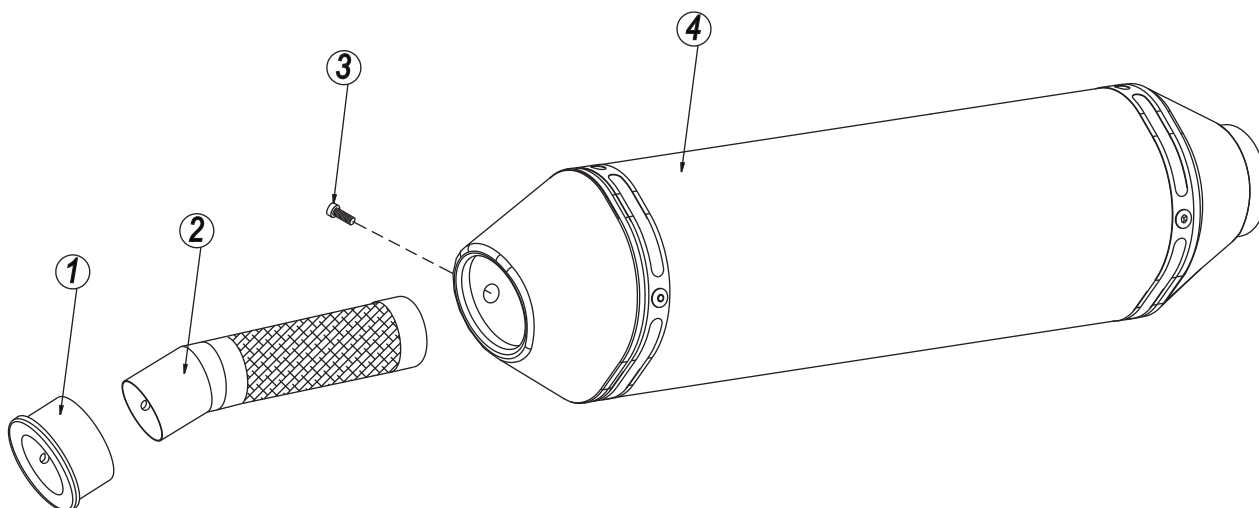
YOSHIMURA

RESEARCH & DEVELOPMENT OF AMERICA, INC.

5420 DANIELS STREET SUITE A, CHINO, CA 91710 · (800)634-9166 · (909)628-4722 · FACSIMILE (909)591-2198

www.yoshimura-rd.com

Spark Arrester Cleaning Information



Parts Diagram

Caution: *Muffler can be extremely hot. Let muffler cool down before removing spark arrester.*

Note: *Read through all instructions before beginning disassembly.*

Tools Needed:

3mm Allen Key
Wire Brush
Pair of Gloves
Safety Glasses

Cleaning Steps:

- 1 Using a 3mm Allen key, remove the bolt that secures the aluminum ring and spark arrester to the muffler (see Parts Diagram for location).
- 2 Remove the spark arrester from the muffler.

NO.	DESCRIPTION	QTY
1	Aluminum Ring	1
2	Spark Arrester	1
3	Spark Arrester Securing Bolt	1
4	Muffler Assembly	1

- 3 Using a wire brush, remove carbon deposits from spark arrester screen. Inspect the screen for excessive wear or damage. If spark arrester is excessively worn or damaged, the spark arrester must be replaced. Cleaning and inspection should be performed after every 60 hours of use.

CAUTION: *Gloves and safety glasses should be worn while cleaning spark arrester.*

- 4 Re-install spark arrester and aluminum ring. Torque the spark arrester securing bolt to 1.0 kg-m (7.3 lb-ft).

NOTE: *It is recommended that a low strength "Loc-tite" is used on the spark arrester securing bolt.*