



YOSHIMURA

RESEARCH & DEVELOPMENT OF AMERICA, INC.

5420 DANIELS STREET STE A, CHINO CA 91710 · (800) 634-9166 · (909) 628-4722 · FAX (909) 591-2198

WWW.YOSHIMURA-RD.COM

Signature Series

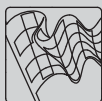
Qualified Manufacturer Declared "Replacement Part"

2003-2014
Suzuki LT-Z400

2003-2006
Kawasaki KFX 400

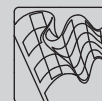
2003-2008
Arctic Cat DVX 400

2176503 (SS/AL)
RS-2 Stainless Steel Full-System



Signature Series systems are:

- CARB/EPA tail-pipe emissions compliant.
- Marked with appropriate EPA noise labels.
- Independent laboratory tested for EPA new vehicle noise compliance.



✘ CAUTION: The muffler packing on this system MUST be replaced every 6-8 hours of use, or every 1-2 motos. Failure to follow recommended muffler re-packing interval can cause muffler damage and may void the warranty. ✘

NOTE: IN THE STATE OF CALIFORNIA, IT IS ILLEGAL TO MODIFY THE EMISSION CONTROL SYSTEM, WHICH INCLUDES THE FUEL INJECTION OF ANY VEHICLE.

Caution: Exhaust system can be extremely hot. Let motorcycle cool down before beginning installation. Always wear hand and eye protection and take precautionary measures to avoid injury.

Note: Read through all instructions before beginning installation.

Tools Needed:

Metric Socket Set
Ratchet and Extension
Metric Combination Wrench Set
Allen Bit Set
Torque wrench
Suzuki Service Manual

Installation Steps:

- 1 Remove stock muffler. (See Fig. 1)
- 2 Remove heat shield from stock header and install onto Yoshimura header using stock bolts. (See Fig. 2)
- 3 Remove stock header and exhaust port gasket.

NOTE: To remove stock header it is necessary to remove the radiator hose pictured in Fig. 2. (On 2003-08 models removal of thermostat is also required). Drain coolant into a clean container if to be reused (Refer to factory service manual for detailed instructions). Loosen one of the hose clamps and disconnect hose.

THERMOSTAT COVER REMOVAL

(Note on 2009 model removal of thermostat is NOT needed.)

- Make sure coolant is drained before removal.
- Place a rag under the thermostat case.
- Remove the two 8mm hex headed bolts and the thermostat cover.
- Remove the thermostat.

- 4 Install new exhaust port gasket.
Not supplied (Suzuki Part no. 14181-29E02)
- 5 Install Yoshimura header using stock header nuts.
Do not tighten nuts at this point.
- 6 Insert supplied rubber grommet into Yoshimura muffler mounting bracket.



Fig. 1

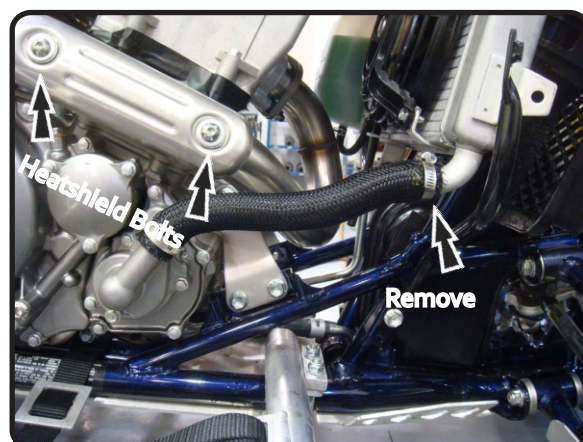


Fig. 2

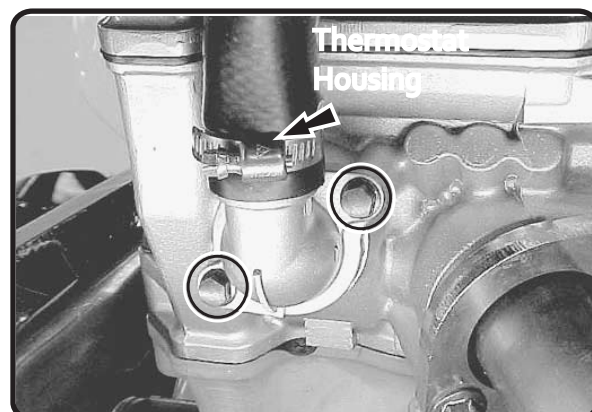


Fig. 3

- 7 Insert supplied aluminum spacer into the inside of the rubber grommet. See parts diagram on page 4 for orientation.
- 8 Install Yoshimura tailpipe with muffler onto Yoshimura header. Install supplied springs onto header-tailpipe with supplied spring puller tool. (See Fig. 5)
- 9 Mount muffler to upper chassis mount. Mounting orientation should go as follows: Supplied bolt, washer, muffler mounting bracket w/ inserted rubber grommet, aluminum spacer, aluminum spacer, frame (See Fig. 5 and Parts Diagram).
- 10 Torque stock header nuts to 2.0 kg-m (14.6 lb-ft)
- 11 Torque muffler mounting bolt to 2.5 kg-m (18 lb-ft).
- 12 Reinstall radiator hose and clamp.
- 13 THERMOSTAT COVER INSTALLATION (2003-08 Models)
 - Install the thermostat in the reverse order of removal.
 - Apply engine coolant to the rubber seal on the thermostat.
- 14 Fill radiator with new coolant.
- 15 Refer to factory service manual for steps on bleeding the cooling system.
- 16 Reinstall radiator cap.
- 17 It is recommended that the entire exhaust system be wiped down with rubbing alcohol to remove oil and fingerprints. This will help prevent tarnishing of the finish after the exhaust is heated up.
- 18 Before starting motorcycle check for proper clearance between new exhaust system and motorcycle. (i.e. radiator & fan assembly, rear brake, frame, tire, etc.) If any problem is found, please carefully follow through the installation steps again. If problem still persists, please call Yoshimura tech. Dept. At (800)634-9166 / in CA (909)628-4722

Note: After starting motorcycle, it is normal for new exhaust system and muffler to smoke until oil residue burns off.

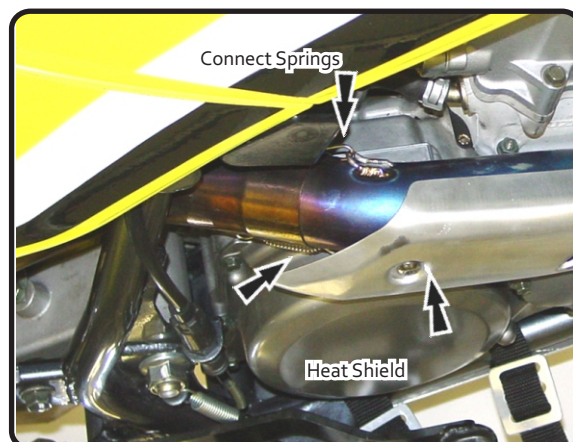


Fig. 4

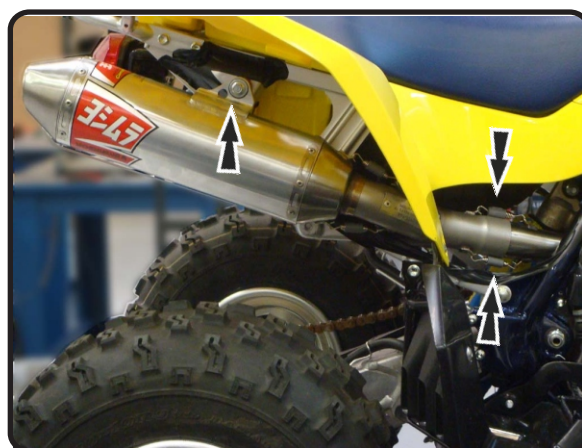
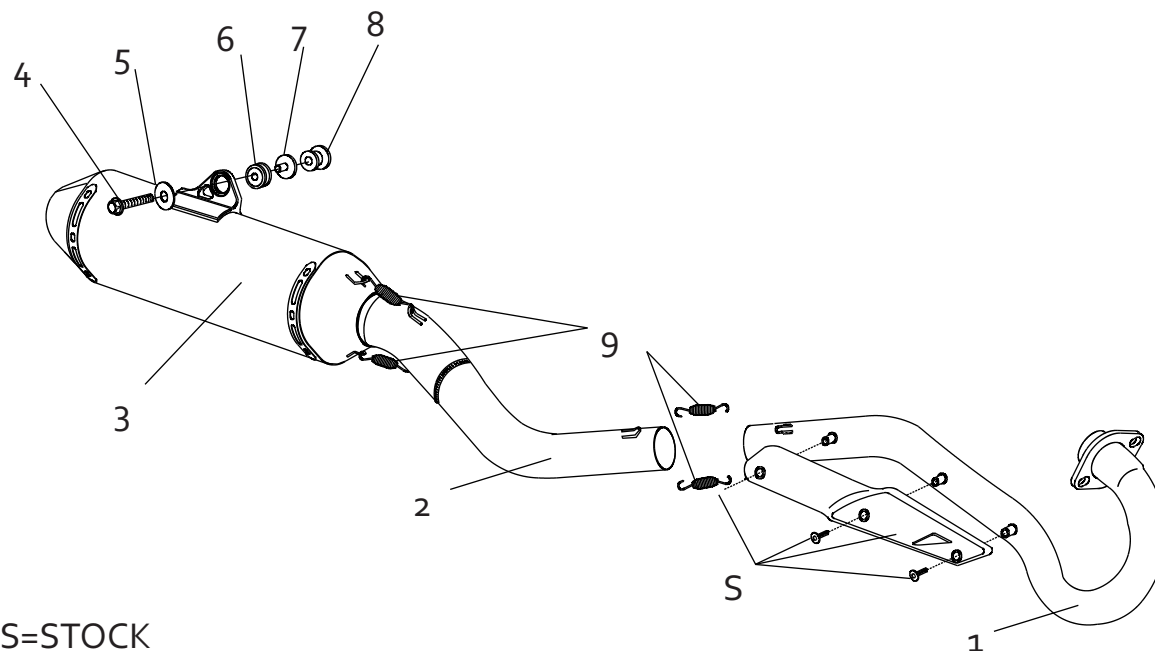


Fig. 5

#2176503



Parts Diagram

NO.	DESCRIPTION	QTY	PART #
1	Yoshimura Header Stainless Steel Race	1	2175-101
2	Yoshimura Tailpipe Stainless Steel Race	1	2176-144
3	RS2 Offroad Muffler Assembly	1	2176703-RMA
4	8mm x 55mm Flange Hex Bolt	1	M8X55H
5	Large Washer	1	8MMWASHERL
6	Rubber Grommet	1	Z1022
7	Aluminum Spacer	1	ALS-003
8	8mm x 26mm Aluminum Spacer	1	8X26SPCR
9	Exhaust Spring Medium	4	RACE-SPS-1
**	Spring Puller Tool	1	ST-200
**	Offroad Endcap Plug	1	347PLUG
**	Yoshimura Vinyl Sticker	1	17029



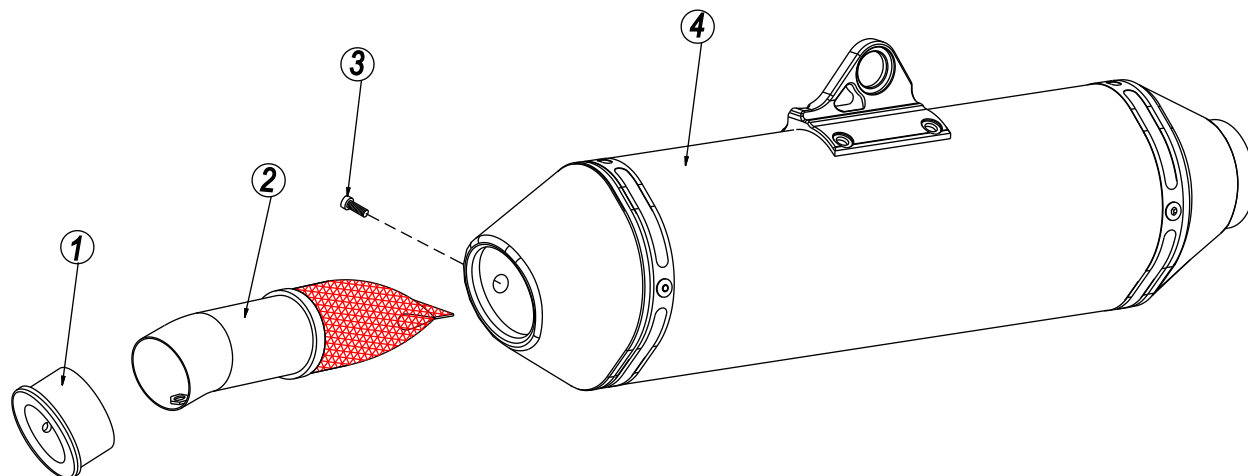
YOSHIMURA

RESEARCH&DEVELOPMENT OF AMERICA, INC.

5420 DANIELS STREET SUITE A, CHINO, CA 91710 · (800)634-9166 · (909)628-4722 · FACSIMILE (909)591-2198

www.yoshimura-rd.com

Spark Arrester Cleaning Information



Parts Diagram

Caution: *Muffler can be extremely hot. Let muffler cool down before removing spark arrester.*

Note: *Read through all instructions before beginning disassembly.*

Tools Needed:

4mm Allen Key
Wire Brush
Pair of Gloves
Safety Glasses

Cleaning Steps:

- 1 Using a 4mm Allen key, remove the bolt that secures the aluminum ring and spark arrester to the muffler (see Parts Diagram for location).
- 2 Remove the spark arrester from the muffler.

NO.	DESCRIPTION	QTY
1	Aluminum Ring	1
2	Spark Arrester	1
3	Spark Arrester Securing Bolt	1
4	Muffler Assembly	1

- 3 Using a wire brush, remove carbon deposits from spark arrester screen. Inspect the screen for excessive wear or damage. If spark arrester is excessively worn or damaged, the spark arrester must be replaced. Cleaning and inspection should be performed at the same time as muffler repacking. Muffler repacking is recommended every 8-10 hours or 2 motos, whichever comes first.

CAUTION: Gloves and safety glasses should be worn while cleaning spark arrester.

- 4 Re-install spark arrester and aluminum ring. Torque the spark arrester securing bolt to 1.0 kg-m (7.3 lb-ft).

NOTE: It is recommended that a low strength "Loc-tite" is used on the spark arrester securing bolt.