



YOSHIMURA

RESEARCH & DEVELOPMENT OF AMERICA, INC.

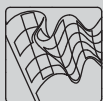
5420 DANIELS STREET STE A, CHINO CA 91710 · (800) 634-9166 · (909) 628-4722 · FAX (909) 591-2198

WWW.YOSHIMURA-RD.COM

Signature Series

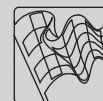
Qualified Manufacturer Declared "Replacement Part"

2014
Honda Pioneer 700
327002C550 (SS/SS)
RS-2 Stainless Steel Slip-On



Signature Series systems are:

- CARB/EPA tail-pipe emissions compliant.
- Marked with appropriate EPA noise labels.
- Independent laboratory tested for EPA new vehicle noise compliance.



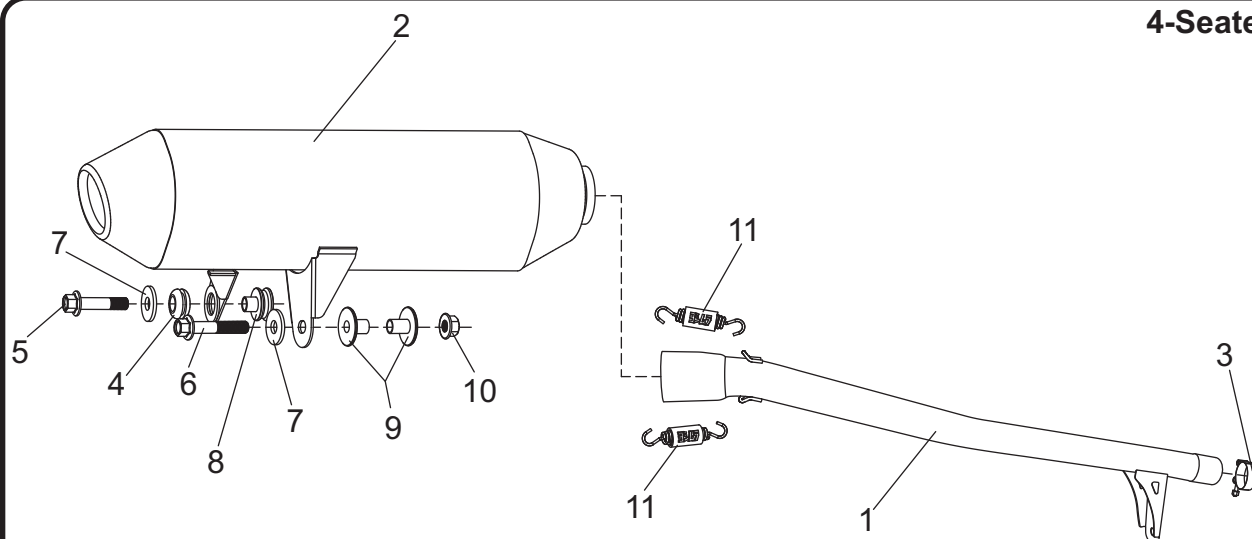
CAUTION: The muffler packing on this system **MUST** be replaced every 6-8 hours of use, or every 1-2 motos. Failure to follow recommended muffler re-packing interval can cause muffler damage and may void the warranty.



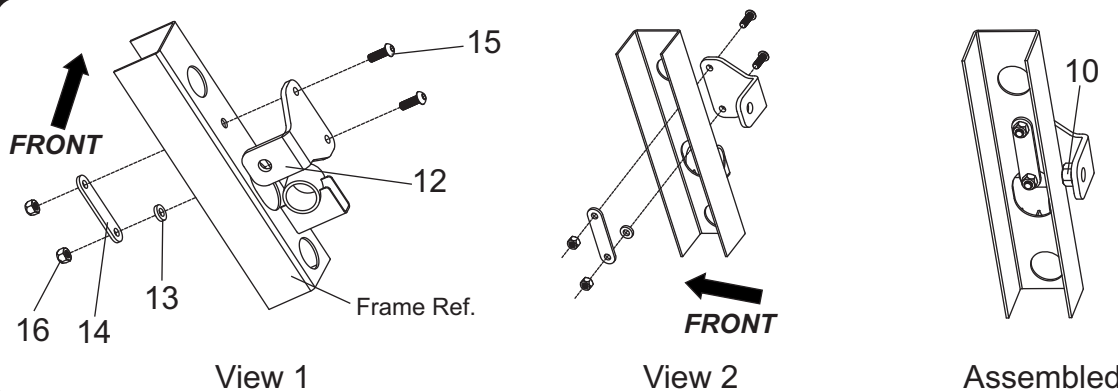
NOTE: IN THE STATE OF CALIFORNIA, IT IS ILLEGAL TO MODIFY THE EMISSION CONTROL SYSTEM, WHICH INCLUDES THE FUEL INJECTION OF ANY VEHICLE.

Assembly Diagram

4-Seater



2-Seater



No.	Item	Description	Qty.
Ĉ	32700-151	Yoshimura Tailpipe	1
2	****	Signature Series Muffler	1
3	22057	Exhaust Clamp	1
4	Z1022	Rubber Bushing	1
5	M10X45H	10mm x 45mm Flanged Hex Head Bolt	1
6	M10X55H	10mm x 55mm Flanged Hex Head Bolt	1
7	10X30WSH	XL Washer	2
8	ALS-017	Aluminum Spacer	1
9	ALS-050	Aluminum Spacer	2
10	10MMFNUT	10mm Flange Nut	2
11	RACE-SPS-1	Medium Exhaust Spring	2
12	32700-BRKT	2-Seater Muffler Bracket	1
13	32700-BRKT-SPCR	Bracket Spacer	1
14	32700-BRKT-BP	Bracket Backing Plate	1
15	M6X18BHS	6mm x 18mm Button Head Screw	2
16	6MMLN	6mm Lock Nut	2
**	ST-200	Spring Puller Tool	1
**	347PLUG	Yoshimura Wash Plug	1
**	17029	Sticker Kit Sheet	1

**** Signature Series muffler replacement part number unavailable. Repair or replacement of Signature Series exhaust systems is only available directly through Yoshimura R&D of America, Inc.

Removal

1. Tilt the rear bed back to gain access to the stock exhaust system.

Note: Removal of the rear bed may ease installation but is not required. If desired, follow bed removal steps in Factory Service / Owners Manual.

2. Remove the three hose clamps securing the tailpipe heatshield to the stock muffler tailpipe and carefully remove the heatshield.

Note¹: The stock heatshield has very sharp edges. Take precaution when removing to prevent injury.

Note²: The stock tailpipe heatshield and hose clamps will be reused. Do not damage during removal.

3. Loosen the exhaust clamp at header to tailpipe connection.
4. Remove the chassis mount bolt securing tailpipe to frame.

Note: The stock chassis mount hardware will be reused to secure Yoshimura tailpipe to the chassis.

5. Close the rear bed and be sure it locks into place.
6. Carefully remove the stock muffler assembly by pulling the two muffler pins out of the rubber bushing toward the rear of the vehicle.

Note: The stock exhaust clamp and exhaust gasket will not be used with the Yoshimura exhaust system.

7. On 4-seater applications, remove the left rear stock lower roll bar bolt securing the roll bar to the frame. This location will be used to mount and secure the Yoshimura muffler.

Installation

1. Slide (No. 3) 22057, exhaust clamp over (No. 1) 32700-151, tailpipe inlet as shown in the assembly diagram.
2. Install (No. 1) 32700-151, tailpipe over the stock header outlet.

3. Secure (No. 1) 32700-151, tailpipe to chassis using the stock chassis mount hardware. Do not torque at this time.

- 3a. 2-seater model requires the installation of a secondary muffler mount bracket to the frame. See diagram for proper orientation and order of hardware.

4. Install (No. 4) Z1022, rubber bushing into muffler bracket.

5. Install (No. 9) ALS-050, aluminum spacer into the rear stock rubber bushing as shown in the diagram.

6. Install Yoshimura muffler assembly onto (No. 1) 32700-151, tailpipe and secure using the hardware provided in the kit. See assembly diagram for proper orientation and order of hardware.

7. Install (No. 11) RACE-SPS-1, medium exhaust spring onto muffler and tailpipe connection.

8. Torque (No. 5,6) M10X45H and M10X55H, muffler mount bolts to 20 Nm (2.0 kg-m, 15 ft-lb).

9. Torque tailpipe chassis mount bolt to factory specification.

10. Torque (No. 3) 22057, exhaust clamp to 8.5 Nm (0.86 kg-m, 6 ft-lb).

11. Re-install the stock tailpipe heatshield onto (No. 1) 32700-151, tailpipe using the two stock hose clamps. Torque hose clamps to factory specification.

12. Before starting vehicle, check for proper clearance between new exhaust system and rear suspension (i.e. tire, control arms, brakes, rear shock, and etc.) If any problem is found, please carefully follow through the installation steps again. If problem still persists, please call Yoshimura Tech Department at (800) 634-9166 / in CA (909) 628-4722.

13. It is recommended that the muffler and tailpipe be wiped down with rubbing alcohol to remove oil and fingerprints. This will help prevent tarnishing of the finish after the exhaust is heated up.

Note: After starting motorcycle, it is normal for new exhaust system and muffler to emit smoke until oil residue burns off.