



YOSHIMURA

RESEARCH&DEVELOPMENT OF AMERICA, INC.

5420 DANIELS STREET STE A, CHINO CA., 91710 · (800)634-9166 · (909)628-4722 · FACSIMILE (909)591-2198

www.yoshimura-rd.com

Signature Series

Honda Rancher

324200C550

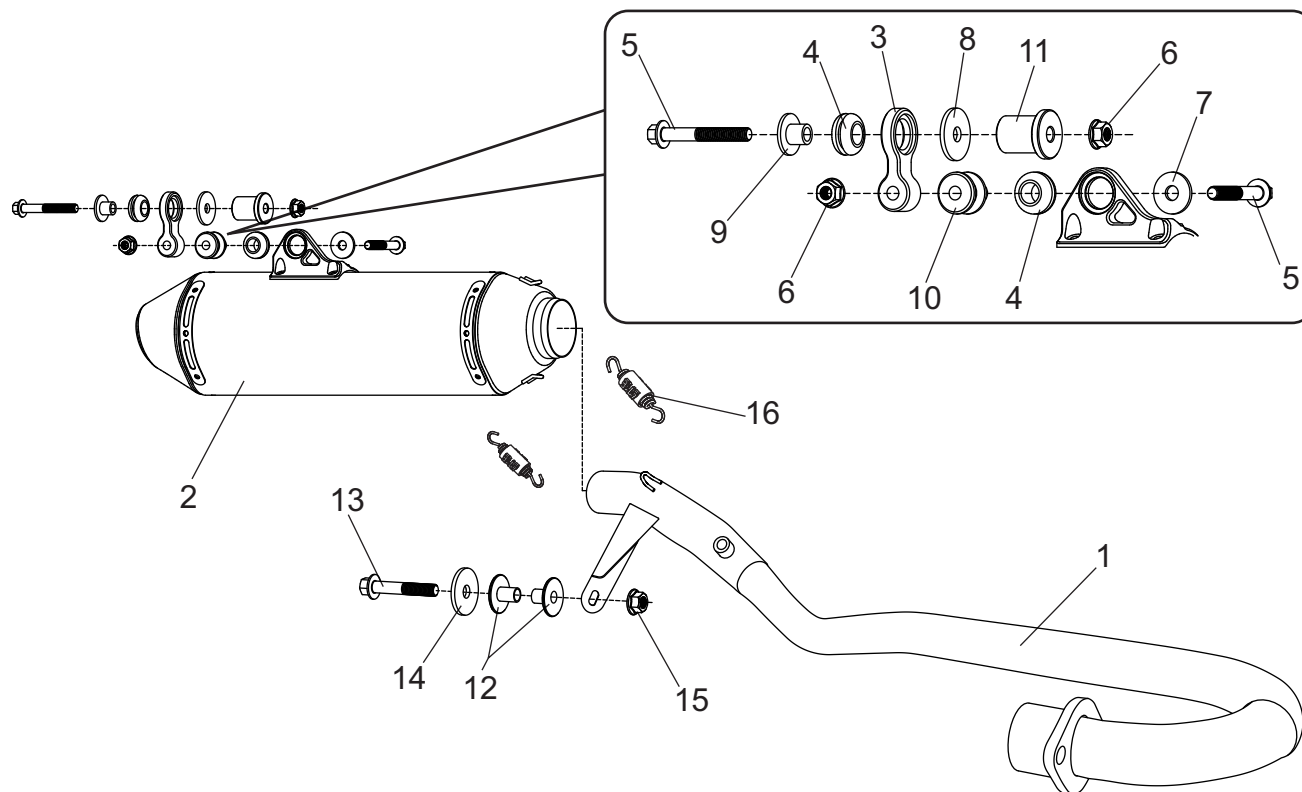
RS2 Full-System Exhaust



This product is 50-state legal and complies with Federal and State regulations. Any attempts to modify this product will render it non-compliant with Federal law and void warranty. If modified, the vehicle can no longer be used on public roads and can only be used for off-highway closed course competition. In the state of California, it is illegal to modify the emission control system, which includes the fuel injection system of any vehicle.



Assembly Diagram



No.	Item	Description	Qty.
1	32420-101	Yoshimura Header	1
2	****	Signature Series Muffler	1
3	39900-RS4BRKT	Muffler Hanger Bracket	1
4	Z1022	Rubber Bushing	2
5	M8X60H	8mm x 60mm Flanged Hex Head Bolt	2
6	8MMNUT	8mm Flange Nut	2
7	8MMWASHERL	8mm Large Washer	1
8	8MMWASHERXL	8mm XL Washer	1
9	ALS-003	Aluminum Spacer	1
10	ALS-004	Aluminum Spacer	1
11	ALS-051	Aluminum Spacer	1
12	ALS-050	Aluminum Spacer	2
13	M10X60H	10mm x 60mm Flanged Hex Head Bolt	1
14	10X30WSH	10mm Washer	1
15	10MMFNUT	10mm Flange Nut	1
16	RACE-SPS-1	Medium Exhaust Spring	2
**	ST-200	Spring Puller Tool	1
**	347PLUG	Yoshimura Wash Plug	1
**	17029	Sticker Kit Sheet	1

**** Signature Series muffler replacement part number unavailable. Repair or replacement of Signature Series exhaust systems is only available directly through Yoshimura R&D of America, Inc.

Removal

1. Remove seat as per Factory Service / Owners Manual.
2. Remove the left side center splash guard by the footpeg. Take precaution when removing plastic push clips making sure not to damage them during the removal process.
3. Remove left side cover as per Factory Service / Owners Manual to gain access to the stock exhaust system.
4. Remove the O2 sensor from the stock muffler assembly.
5. Remove the stock header heatshield by removing the hose clamps securing heatshield to header.

Note: The stock header heatshield and hose clamps will be re-used with the Yoshimura exhaust system.

6. Remove the header nuts.
7. While securely supporting the stock muffler assembly, carefully remove muffler by sliding muffler pins out toward the front of the vehicle.

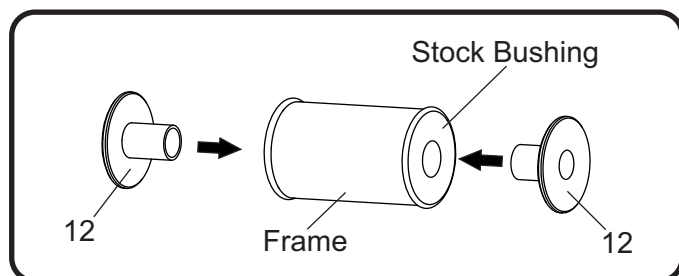
Note: Exhaust port gasket will be re-used with the Yoshimura exhaust system. Inspect and replace if necessary.

8. Remove the top rear muffler rubber bushing from the frame.

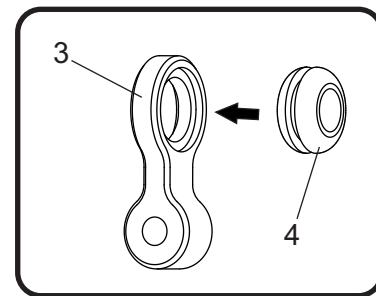
Note: The lower front muffler rubber bushing will be used. Do not remove.

Installation

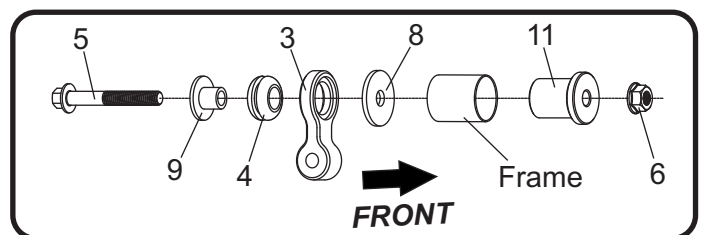
1. Install (No. 12) *ALS-050*, aluminum spacer into the lower front muffler bushing as shown.



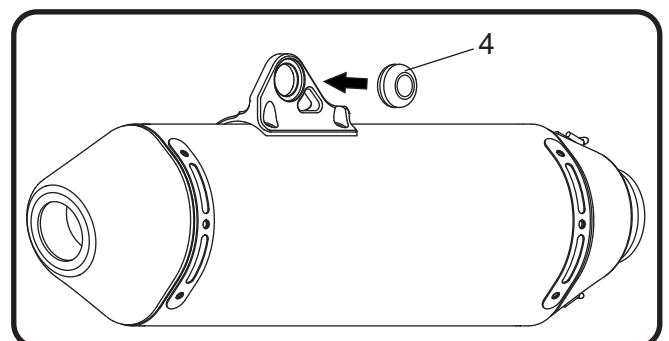
2. Install (No. 1) *32420-101*, Yoshimura header using the stock header nuts. Do not torque at this time.
3. Align header chassis mount to frame and secure using (No. 13) *M10X60H*, 10mm bolt, (No. 14) *10X30WSH*, 10mm washer, and (No. 15) *10MMFNUT*, 10mm nut. See assembly diagram for proper orientation and order of hardware.
4. Install the stock O2 sensor into (No. 1) *32420-101*, Yoshimura header. Torque to factory specification.
5. Install (No. 4) *Z1022*, rubber bushing into (No. 3) *39900-RS4BRKT*, muffler hanger bracket.



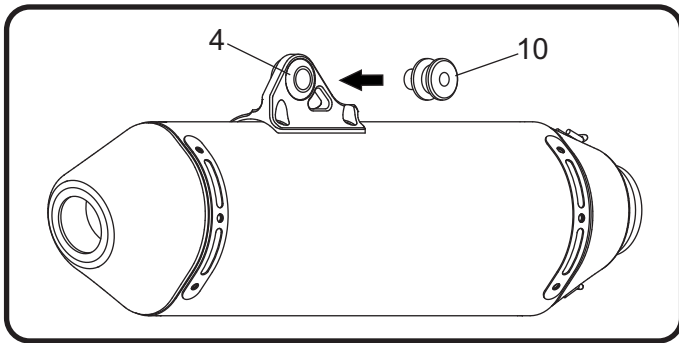
6. Install (No. 11) *ALS-051*, aluminum spacer into frame and secure using (No. 5) *M8X60H*, bolt, (No. 8) *8MMWASHERXL*, XL washer, (No. 9) *ALS-003*, aluminum spacer, and (No. 6) *8MMNUT*, flange nut as shown. Do not torque at this time.



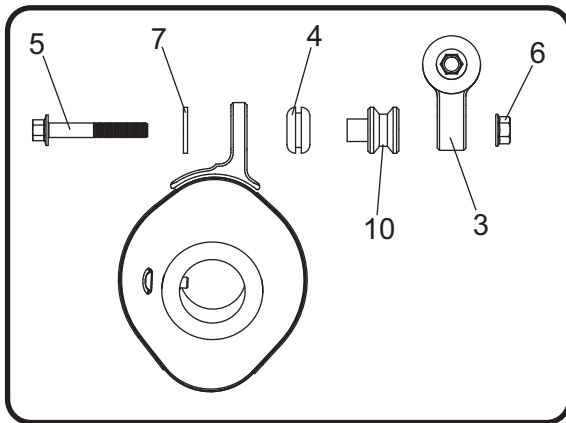
7. Install (No. 4) *Z1022*, rubber bushing into muffler bracket.



8. Install (No. 10) *ALS-004*, aluminum spacer into (No. 4) *Z1022*, rubber bushing in muffler bracket as shown.



9. Install Yoshimura muffler assembly by sliding onto header outlet.
10. Secure Yoshimura muffler to (No. 3) *39900-RS4BRKT*, muffler hanger bracket using the provided (No. 5) *M8X60H*, bolt, (No. 7) *8MMWASHERL*, washer, and (No. 6) *8MMNUT*, nut.



11. Install (No. 16) *RACE-SPS-1*, medium exhaust springs between muffler and header connection using the provided *ST-200*, spring puller tool.

12. Lift the header up and torque the header nuts to factory specification.

Note: Check to make sure there is ample clearance between the header and frame.

13. Torque (No. 5) *M8X60H*, muffler hanger bracket bolt and muffler mount bolt to 32.5 Nm (3.2 kg-m, 24 ft-lb).

14. Torque (No. 13) *M10X60H*, chassis mount bolt to 50 Nm (5.0 kg-m, 37 ft-lb).

15. Re-install the stock header heatshield onto (No. 1) *32420-101*, Yoshimura header using the stock hose clamps.

16. Before starting vehicle, check for proper clearance between new exhaust system and rear suspension (i.e. tire, control arms, brakes, rear shock, and etc.) If any problem is found, please carefully follow through the installation steps again. If problem still persists, please call Yoshimura Tech Department at (800) 634-9166 / in CA (909) 628-4722.

17. It is recommended that the muffler and tailpipe be wiped down with rubbing alcohol to remove oil and fingerprints. This will help prevent tarnishing of the finish after the exhaust is heated up.

Note: After starting motorcycle, it is normal for new exhaust system and muffler to emit smoke until oil residue burns off.