



YOSHIMURA

RESEARCH&DEVELOPMENT OF AMERICA, INC.

5420 DANIELS STREET STE A, CHINO CA 91710 · (800)634-9166 · (909)628-4722 · FACSIMILE (909)591-2198

WWW.YOSHIMURA-RD.COM

OFF-ROAD PERFORMANCE EXHAUST SYSTEM

KTM
2012
250 SX-F

262500D321 STAINLESS STEEL RS4 FULL SYSTEM WITH ALUMINUM SLEEVE



THIS PRODUCT IS DESIGNED FOR USE IN CLOSED COURSE RACING AND IS NOT INTENDED FOR ANY OTHER USE.



CAUTION: The muffler packing on this system **MUST** be replaced every 6-8 hours of use, or after each moto. Failure to follow recommended muffler re-packing interval can cause muffler damage and may void the warranty.



NOTE: IN THE STATE OF CALIFORNIA, IT IS ILLEGAL TO MODIFY THE EMISSION CONTROL SYSTEM, WHICH INCLUDES THE CARBURETORS OF ANY VEHICLE.

CAUTION: Exhaust system can be extremely hot. Let motorcycle cool down before beginning installation. Always wear hand and eye protection and take precautionary measures to avoid injury.

WARNING: Always properly support vehicle with a stand and/or lift when servicing or performing any work. Unstable vehicles may present dangerous conditions and may cause property damage, personal injury and/or death.

Note: Read through all instructions before beginning installation.

Tools Needed:

- Metric Socket Set
- Ratchet Wrench and Extension
- Torque Wrench
- Spring Puller Tool

Installation Steps:

1. Stock exhaust removal.

- a. Follow owner's manual instructions to remove stock silencer.
- b. Remove stock header from bike by removing stock springs securing header to header flange.

Note: Stock header flange springs will be reused on the Yoshimura exhaust system.

2. Yoshimura full system installation.

- a. Install Yoshimura header onto stock manifold.
- b. Remove spring and tailpipe from muffler.
- c. Install Yoshimura tailpipe onto Yoshimura header and secure to frame mount using supplied hardware. Frame mount washer goes between frame and tailpipe. Do not tighten bolt or install springs at this time.
- d. Install Yoshimura rubber grommets and spacers onto muffler brackets. Install muffler onto Yoshimura tailpipe and secure using supplied hardware. Do not tighten bolts or install springs at this time.
- e. Tighten tailpipe mount to 18.5 ft-lbs (25 N-m) and muffler mounts to 7.4 ft-lbs (10 N-m).
- f. Install stock springs between header and flange, and supplied Yoshimura springs between header, tailpipe, and muffler.

4. Before starting motorcycle, check for proper clearance between new exhaust system and rear suspension (i.e. tire, swing-arm, brake, rear shock, engine etc). If any problem is found, please carefully follow through the installation steps again. If problem still persists, please call Yoshimura Tech Department at (800) 634-9166 / in CA (909) 628-4722.

It is recommended that the muffler and tailpipe be wiped down with rubbing alcohol to remove oil and fingerprints. This will help prevent tarnishing of the finish after the exhaust is heated up.

NOTE: After starting motorcycle, it is normal for new exhaust system and muffler to emit smoke until oil residue burns off.

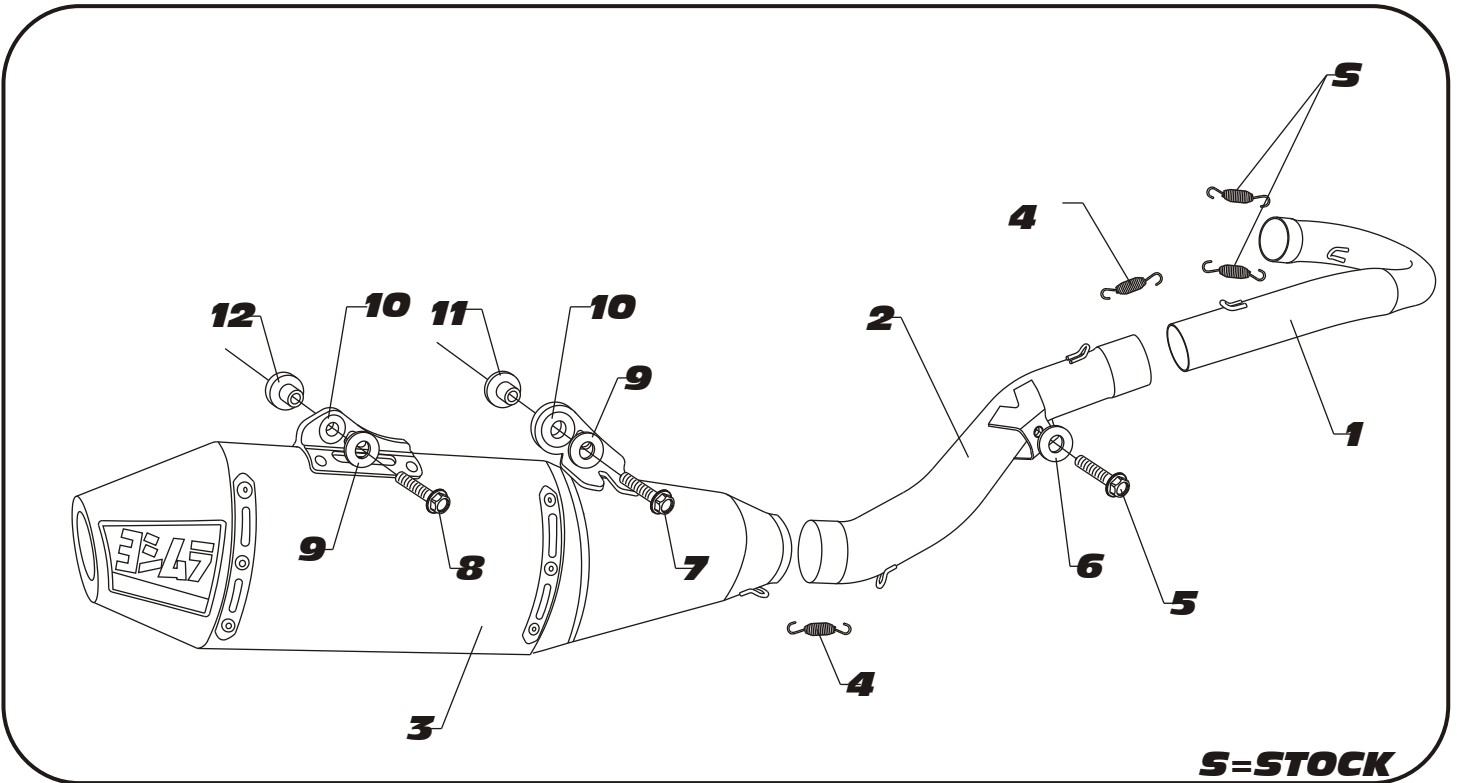
Fuel Injection Mapping:

For best results and to extract the most performance out of the Yoshimura system fuel injection mapping is recommended for closed course competition use only.

Yoshimura R&D offers the PIM2 Fuel Injection controller kit with optional DATA Box. Please contact your dealer or Yoshimura R&D for details.

Note: It is illegal to modify the fuel injection system of any vehicle in the State of California.

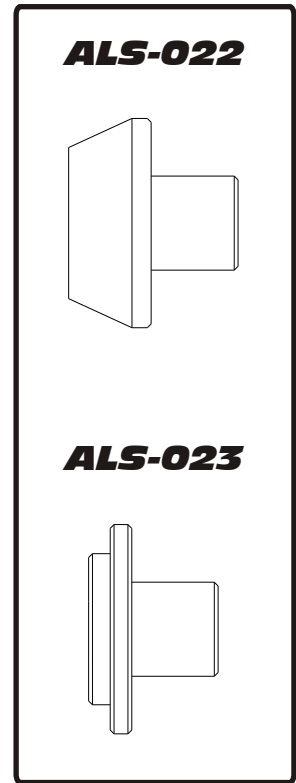
#262500D321



S=STOCK

Parts Diagram

NO.	DESCRIPTION	QTY	PART #
1	Yoshimura Stainless Header	1	26250-104
2	Yoshimura Stainless Tailpipe	1	26250-144
3	Yoshimura RS4 Muffler with Aluminum Sleeve	1	262500D321-RMA
4	Medium Exhaust Spring	2	RACE-SPS-1
5	8mm x 20mm Flanged Hex Head Bolt	1	M8X20H
6	8mm Flat Washer, Large	1	8MMWASHERL
7	6mm x 35mm Flanged Hex Head Bolt	1	M6X35H
8	6mm x 45mm Flanged Hex Head Bolt	1	M6X45H
9	6mm Flat Washer, XL	2	6MMWASHERXL
10	Rubber Grommet	2	Z1022
11	Aluminum Spacer	1	ALS-023
12	Aluminum Spacer	1	ALS-022
**	AMA 94dB Sound Insert (Installed)	1	INS-13-K
**	2m-MAX Sound Insert Kit	1	INS-13-K
**	Offroad Endcap Plug	1	347PLUG
**	Spring Puller Tool	1	ST-200
**	Yoshimura Vinyl Sticker	1	17029
OPTIONAL REPLACEMENT PARTS			
Spark Arrestor		TEC-SD10	
Repack Kit		REPACK-RS4-PK11	





YOSHIMURA

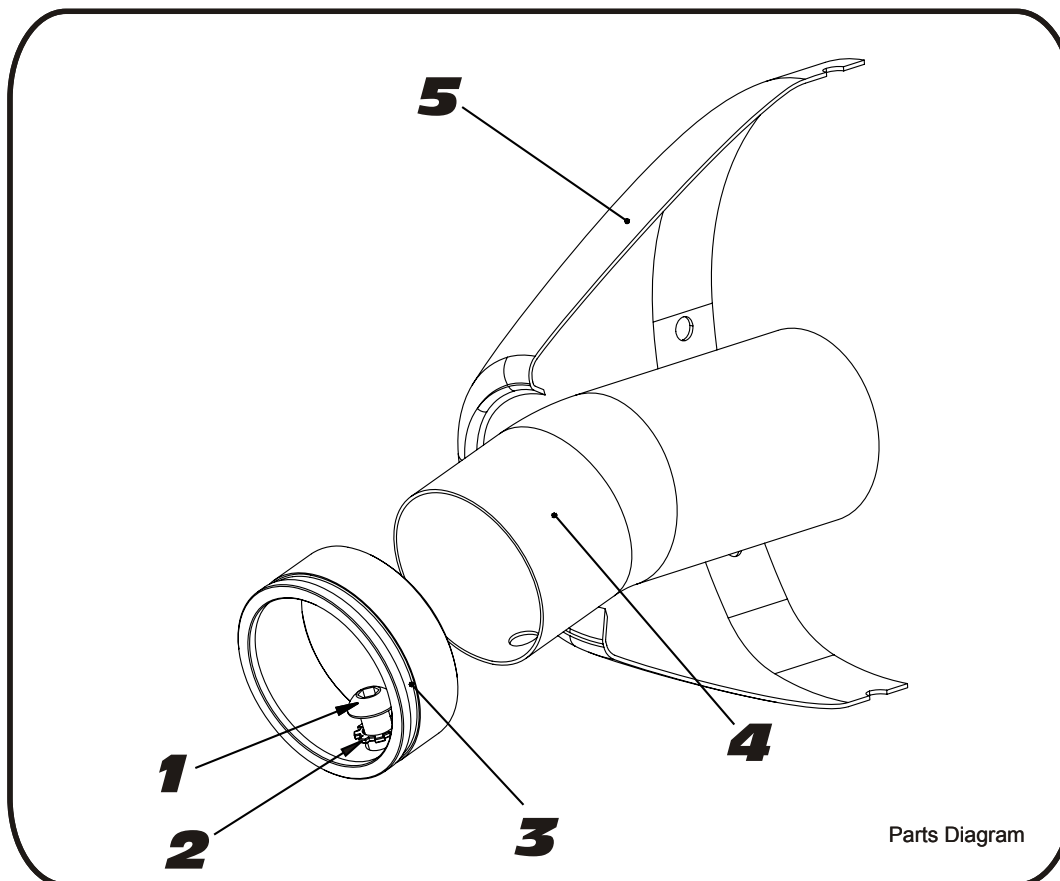
RESEARCH & DEVELOPMENT OF AMERICA, INC.

5420 DANIELS STREET SUITE A, CHINO, CA 91710 · (800)634-9166 · (909)628-4722 · FACSIMILE (909)591-2198

www.yoshimura-rd.com

INS-13-K

YOSHIMURA RS4 LOW VOLUME INSERT KIT



NO.	DESCRIPTION	QTY	PART #
1	6mm X 22mm Button Head Cap Screw	1	M6X22BHS
2	6mm Lock Washer	1	6MMLCKWSHR-TH
3	RS4 Aluminum Insert Ring	1	RS4-RING-1250
4	94 dBA Sound Insert	1	INS-S
5	Yoshimura Exhaust	**	**

1. Using a 4mm Allen key, remove the bolt that secures the aluminum ring and sound insert to the muffler. (See Parts Diagram for location)
2. Remove the sound insert from the muffler.
3. Inspect the sound insert for cracks or damage and replace if necessary.
4. Re-install sound insert and aluminum ring. Torque the sound insert securing bolt to 1.0 kg-m (7.3 lb-ft).
NOTE: It is recommended that a low strength "Loc-tite" is used on the sound insert securing bolt.