

Qualified Manufacturer Declared "Replacement Part"

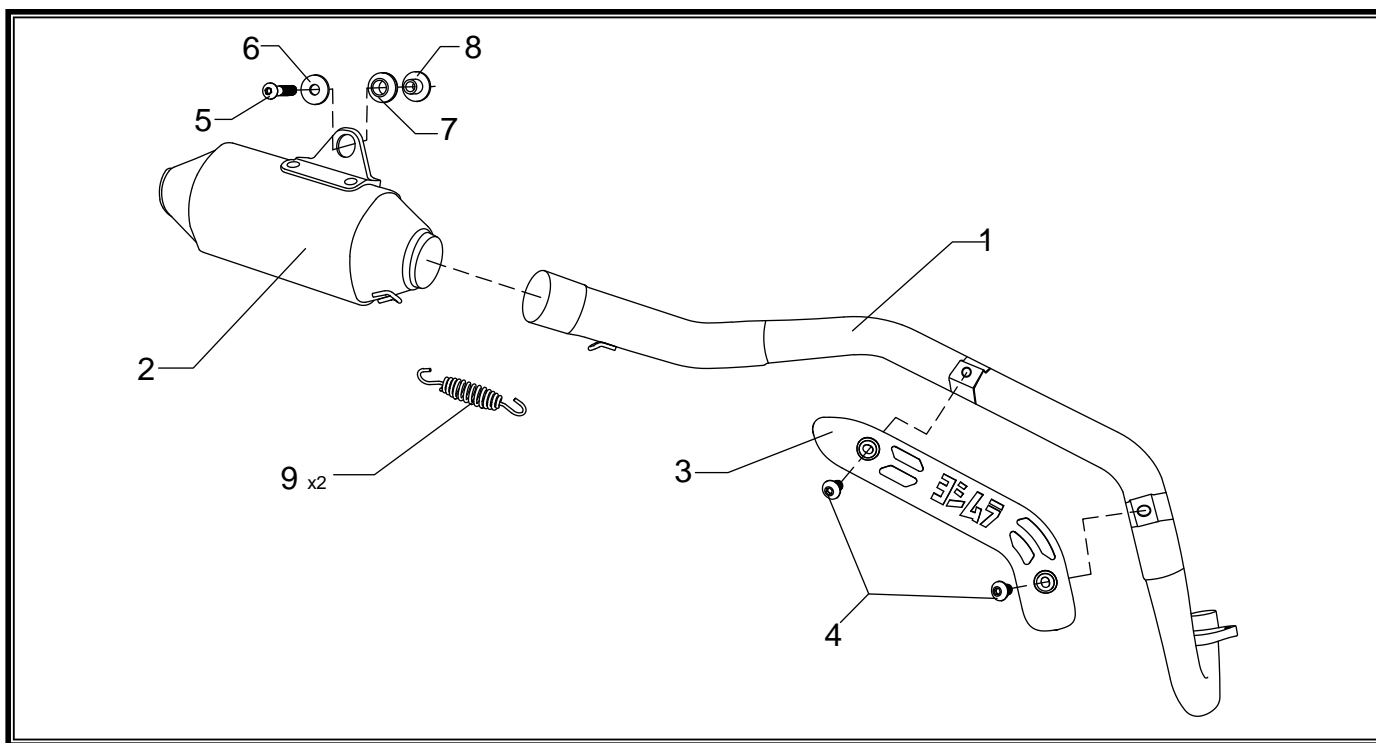
APPLICATION

YEAR	MODEL
2013-2018	Honda CRF110F

PRODUCT

221100B250	RS2 Mini SS Full-System Exhaust with Carbon Fiber Sleeve
------------	--

!	In the state of California, it is illegal to modify the emission control system, which includes the fuel injection of any vehicle.
!	You must know how to remove and replace your stock exhaust in order to install this product otherwise have it installed by a professional mechanic. Keep all stock parts from your existing system as some components may be necessary to install your new Yoshimura exhaust depending on the application.
!	Read through all instructions before beginning installation. Exhaust system can be extremely hot. Let motorcycle cool down before beginning installation. Always wear hand and eye protection and take precautionary measures to avoid injury.



No.	Part #	Description	Qty
1	22110-101	Yoshimura Header	1
2	221100B250-RMA	Yoshimura Muffler Assembly	1
3	22110-HS	Yoshimura Heatshield	1
4	RC116HSB	6mm x 8mm Flanged Button Head Screw	2
5	M8X45BHS	8mm x 45mm Button Head Screw	1
6	8MMWASHERL	8mm Large Washer	1
7	Z1022	Rubber Grommet	1
8	ALS-003	Aluminum Spacer	1
9	RACE-SPS-1	Medium Exhaust Spring	2
**	347PLUG	Muffler Wash Plug	1
**	ST-200	Spring Puller Tool	1
**	17029	Yoshimura Sticker Sheet	1

-TOOLS REQUIRED-

Metric Socket Set • Combination Wrench Set • Torque Wrench • Metric Allen Wrench Set

-REMOVAL-

- 1. Remove right side panel.***
- 2. Remove the (2) header nuts.***
- 3. While securely supporting the stock muffler assembly, remove the muffler mount bolt and carefully remove stock muffler with header.***

Note: The stock exhaust gasket will be re-used with the Yoshimura exhaust system. Inspect and replace if necessary.

-INSTALLATION-

- 1. Install Yoshimura header using the stock header nuts and stock exhaust port gasket. Do not torque header nuts at this time.***
- 2. Install provided rubber grommet onto Yoshimura muffler bracket as shown in the parts diagram.***
- 3. Insert aluminum spacer into rubber grommet. See parts diagram for proper orientation.***
- 4. Install Yoshimura muffler assembly over Yoshimura header outlet.***
- 5. Secure Yoshimura muffler to muffler mount using the 8mm button head screw and washer supplied in the kit. See diagram for proper orientation and order of hardware. Torque muffler mount bolt to factory specification.***
- 6. Install the (2) provided exhaust springs on muffler to header connection.***
- 7. Torque header nuts to factory specification.***
- 8. Install Yoshimura header heatshield using the (2) bolts supplied in the kit. See diagram for proper orientation.***
- 9. Re-install right side panel using the reverse steps of removal.***
- 10. Before starting motorcycle, check for proper clearance between new exhaust system and rear suspension (i.e. tire, swing-arm, brake, rear shock, engine, and etc.) If any problem is found, please carefully follow through the installation steps again. If problem still persists, please call Yoshimura Tech Department at (800) 634-9166 / in CA (909) 628-4722.***
- 11. It is recommended that the muffler and tailpipe be wiped down with rubbing alcohol to remove oil and fingerprints. This will help prevent tarnishing of the finish after the exhaust is heated up.***

NOTE: After starting motorcycle, it is normal for new exhaust system and muffler to emit smoke until oil residue burns off.