



YOSHIMURA

RESEARCH&DEVELOPMENT OF AMERICA, INC.

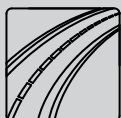
5420 DANIELS STREET STE A, CHINO CA., 91710 · (800) 634-9166 · (909) 628-4722 · FAX (909) 591-2198

www.yoshimura-rd.com

Street Series

Qualified Manufacturer Declared "Replacement Part"

**2015~2017
Yamaha R3
13320BP520 (SS/CF)
Alpha Taper Slip-On**



All Street Series systems are:

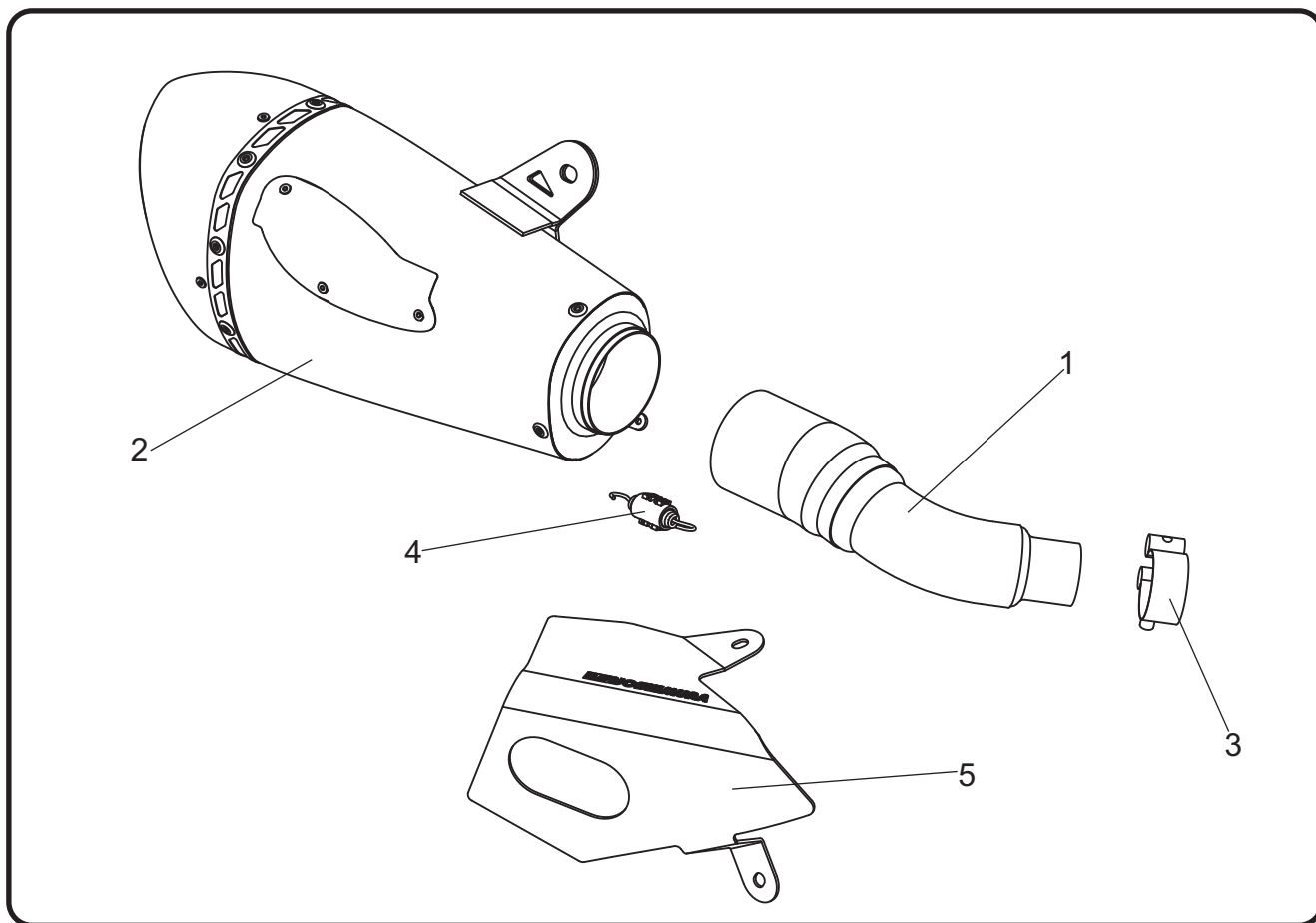
- Slip-on/Bolt-on applications that do not require tampering with the vehicle's emissions control system.
- CARB/EPA tail-pipe emissions compliant.
- Marked with appropriate EPA noise labels.
- Not tested for EPA new vehicle noise compliance.



✱ You must know how to remove and replace your stock exhaust in order to install this product otherwise have it installed by a professional mechanic. Keep all stock parts from your existing system as some components may be necessary to install your new Yoshimura exhaust depending on the application. Read through all instructions before beginning installation. Exhaust system can be extremely hot. Let motorcycle cool down before beginning installation. Always wear hand and eye protection and take precautionary measures to avoid injury. ✱

NOTE: IN THE STATE OF CALIFORNIA, IT IS ILLEGAL TO MODIFY THE EMISSION CONTROL SYSTEM, WHICH INCLUDES THE CARBURETORS OF ANY VEHICLE.

Assembly Diagram



No.	Item	Description	Qty.
1	13320-437	Yoshimura Tailpipe	1
2	13320BP520-RMA	Yoshimura Muffler Assembly	1
3	22053	Exhaust Clamp	1
4	RACE-SPS-1	Medium Exhaust Spring	1
5	13320-HS-YM5T	Muffler Heatshield	1
**	17029	Sticker Sheet	1
**	ST-200	Spring Puller Tool	1

** Not Shown on diagram.

CAUTION: Exhaust system can be extremely hot. Let motorcycle cool down before beginning installation. Always wear hand and eye protection and take precautionary measures to avoid injury.

WARNING: Always properly support vehicle with a stand and/or lift when servicing or performing any work. Unstable vehicles may present dangerous conditions and may cause property damage and/or personal injury.

NOTE: Read through all instructions before beginning installation.

Removal

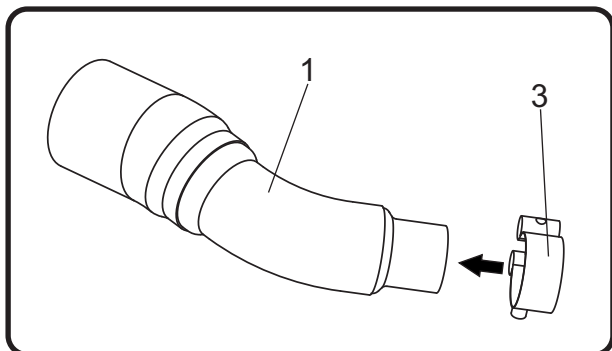
1. Loosen the stock exhaust clamp at the muffler and header connection.
2. While securely supporting the stock muffler, remove the muffler mount bolt and carefully remove the stock muffler.

Note: The stock exhaust gasket will not be used with the slip-on system.

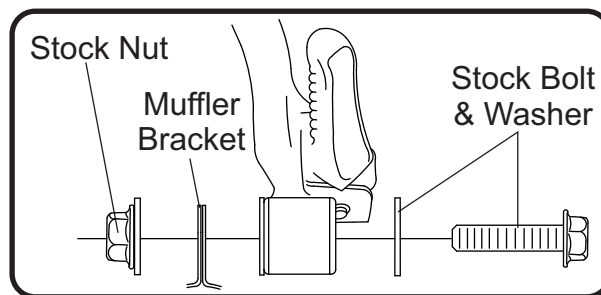
3. Remove the two rear (upper and lower) header heatshield bolts.

Installation

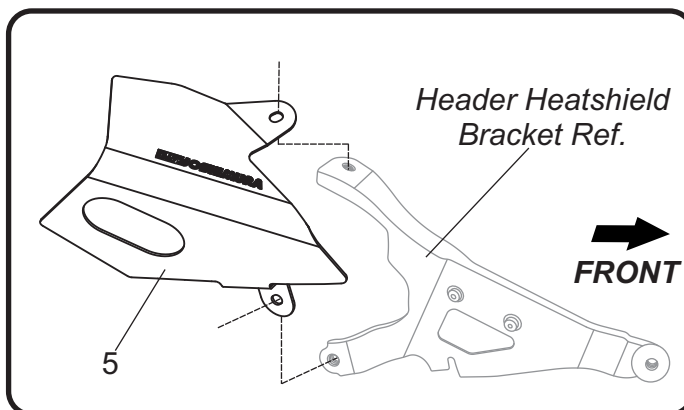
1. Slide (No. 3) 22053, exhaust clamp over the inlet of (No. 1) 13320-437, tailpipe as shown.



2. Install (No. 1) 13320-437, tailpipe over the stock header outlet.
3. Install (No. 2) 13320BP520-RMA, muffler inlet onto (No. 1) 13320-437, tailpipe outlet and align muffler bracket to the backside of the muffler mount. Secure using the stock bolt, washer, and nut as shown.



4. Torque the stock muffler mount bolt to factory specification.
5. Torque (No. 3) 22053, exhaust clamp to 8.5 Nm (0.85 kg-m, 6 ft-lb).
6. Install (No. 4) RACE-SPS-1, medium exhaust spring between tailpipe and muffler using the ST-200, spring puller tool supplied in the kit.
7. Install (No. 5) 13320-HS-YM5T, muffler heatshield between the header heatshield bracket and the stock header heatshield using the two rear (upper and lower) header heatshield bolts removed previously. Torque heatshield bolts to factory specification.



8. Before starting vehicle, check for proper clearance between new exhaust system and rear suspension (i.e. tire, swingarm, brakes, rear shock, and etc.) If any problem is found, please carefully follow through the installation steps again. If problem still persists, please call Yoshimura Tech Department at (800) 634-9166 / in CA (909) 628-4722.
9. It is recommended that the muffler and tailpipe be wiped down with rubbing alcohol to remove oil and fingerprints. This will help prevent tarnishing of the finish after the exhaust is heated up.

Note: After starting motorcycle, it is normal for new exhaust system and muffler to emit smoke until oil residue burns off.