



# YOSHIMURA

RESEARCH&DEVELOPMENT OF AMERICA, INC.

5420 DANIELS STREET STE A, CHINO CA., 91710 · (800) 634-9166 · (909) 628-4722 · FAX (909) 591-2198

[www.yoshimura-rd.com](http://www.yoshimura-rd.com)

## *Signature Series*

Qualified Manufacturer Declared "Replacement Part"

**2013~2018**

**Yamaha FJR1300**

**13150E0220 (CF/CF)**

**R-77 Stainless Steel Slip-On**



Signature Series systems are:

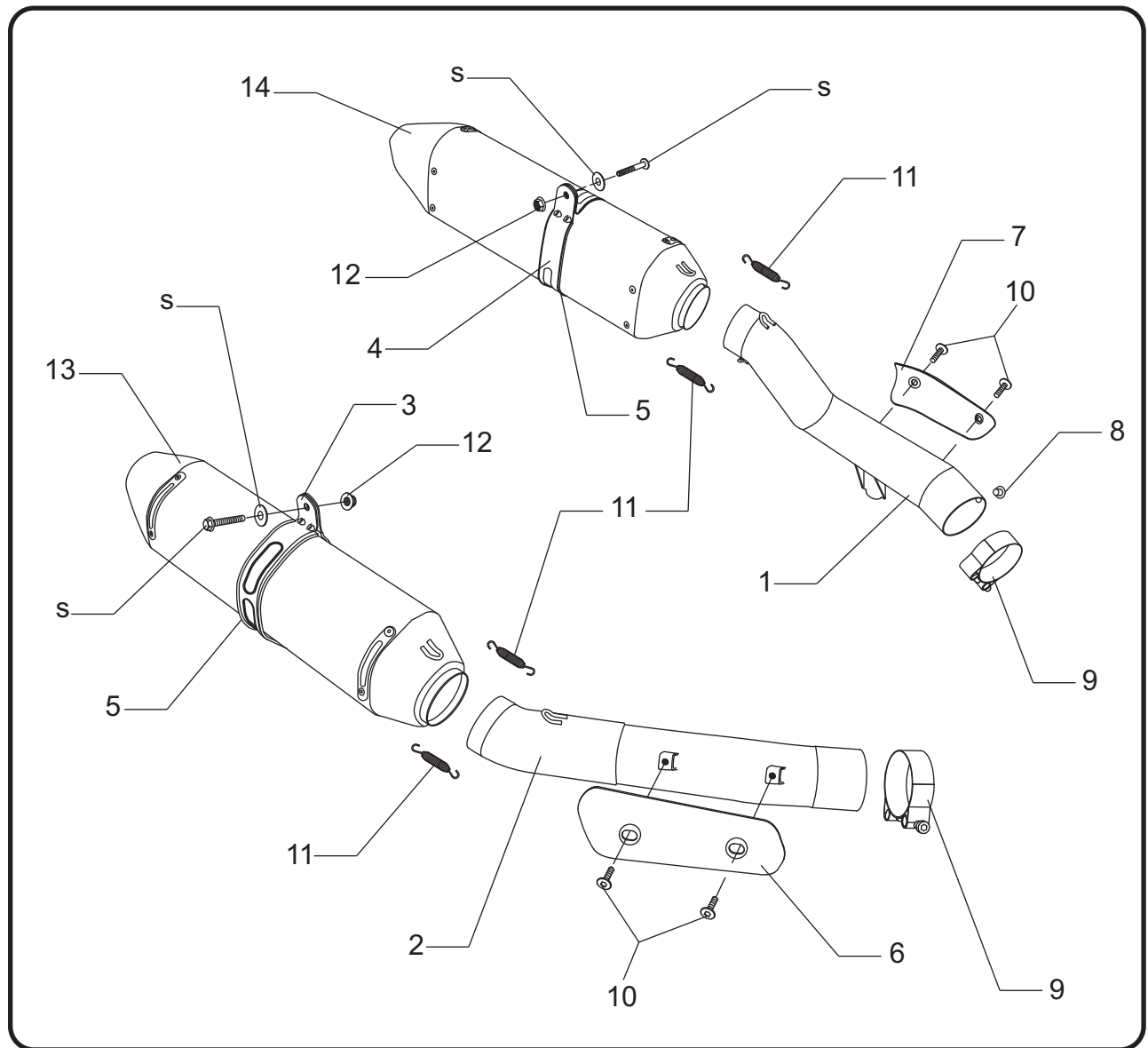
- CARB/EPA tail-pipe emissions compliant.
- Marked with appropriate EPA noise labels.
- Independent laboratory tested for EPA new vehicle noise compliance.



✘ You must know how to remove and replace your stock exhaust in order to install this product otherwise have it installed by a professional mechanic. Keep all stock parts from your existing system as some components may be necessary to install your new Yoshimura exhaust depending on the application. Read through all instructions before beginning installation. Exhaust system can be extremely hot. Let motorcycle cool down before beginning installation. Always wear hand and eye protection and take precautionary measures to avoid injury. ✘

NOTE: IN THE STATE OF CALIFORNIA, IT IS ILLEGAL TO MODIFY THE EMISSION CONTROL SYSTEM, WHICH INCLUDES THE CARBURETORS OF ANY VEHICLE.

# Assembly Diagram



Í ÖB	Item	Description	Qty.
1	13150-426	Yoshimura Left Tailpipe	1
2	13150-427	Yoshimura Right Tailpipe	1
3	1426-MPCR	Right Muffler Clamp	1
4	1426-MPCA	Left Muffler Clamp	1
5	HT SHLDR77	Muffler Clamp Rubber Heatshield	2
6	13150-YHSR	Right Tailpipe Heatshield	1
7	13150-YHSL	Left Tailpipe Heatshield	1
8	S-RIVET	Securing Rivet	1
9	27-61M	Exhaust Clamp	2
10	RC116HSB	6mm x 8mm Flanged Button Head Screw	4
11	RACE-SPS-1	Medium Exhaust Spring	4
12	10MMFNUT	10mm Flange Nut	2
13	****	Right Signature Series Muffler	1
14	****	Left Signature Series Muffler	1
**	ST-200	Spring Puller Tool	1
**	17029	Sticker Kit Sheet	1

\*\*\*\* Signature Series muffler replacement part number unavailable. Repair or replacement of Signature Series exhaust systems is only available directly through Yoshimura R&D of America, Inc.

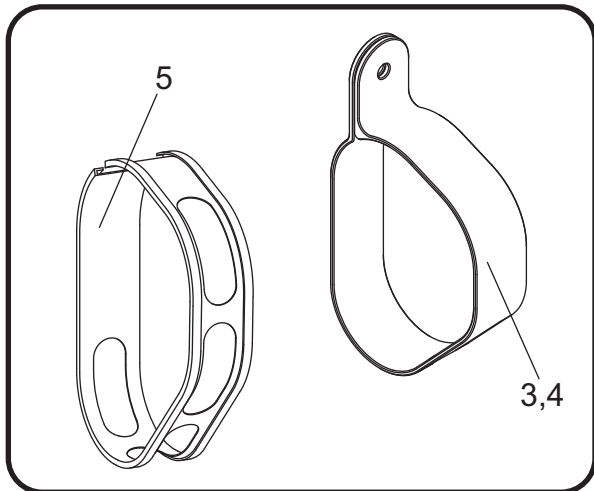
## Removal

1. Place bike on centerstand.
2. Loosen left side muffler exhaust clamp.
3. While securely supporting left muffler, remove left muffler mount bolt and carefully remove left muffler assembly.
4. Loosen right side muffler exhaust clamp.
5. While securely supporting right muffler, remove right muffler mount bolt and carefully remove right muffler assembly.

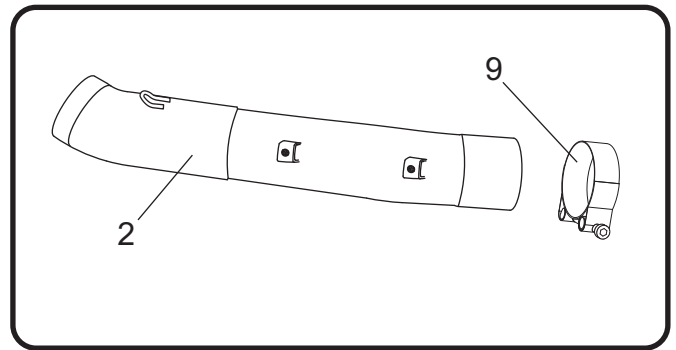
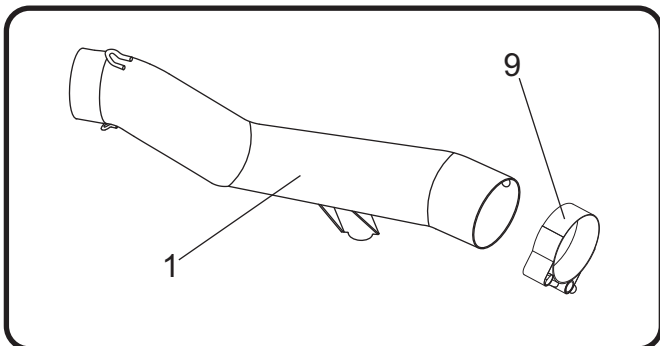
Note: Muffler exhaust gaskets will not be used with the Yoshimura Slip-On exhaust system.

## Installation

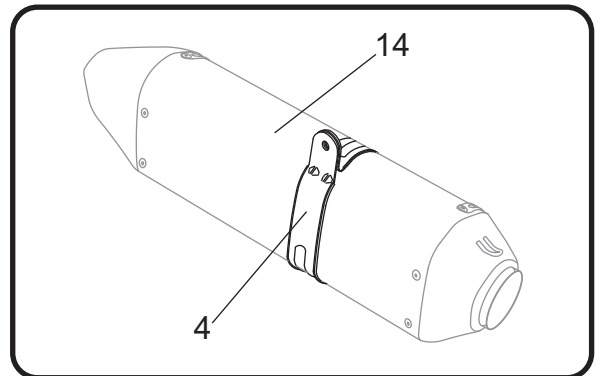
1. Install (5) *HT SHLDR77* muffler clamp rubber heatshield onto (3,4) *1426-MPCR(X) / 1426-MPCA(X)* muffler clamps.



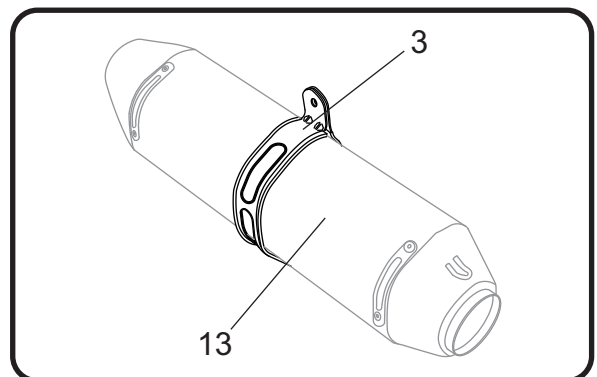
2. Slide (9) *27-61M* exhaust clamp over (1,2) *13150-426 / 13150-427* left and right tailpipe inlet.



3. Slide (4) *1426-MPCA* left muffler clamp over (14) left muffler assembly.



4. Install left muffler assembly by sliding Yoshimura tailpipe over the stock header outlet.
5. Secure left muffler assembly to the outside of the stock muffler mount using the stock bolt, washer, and provided (12) *10MMNUT* flange nut. Torque muffler mount bolt to 25Nm (2.5 kg-m, 18 ft-lb). Do not torque (9) *27-61M* exhaust clamp at this time. See assembly diagram for proper orientation of hardware.
6. Slide (3) *1426-MPCR* right muffler clamp over (13) left muffler assembly.



7. Install right muffler assembly by sliding Yoshimura tailpipe over the stock header outlet.
8. Secure right muffler assembly to the outside of the stock muffler mount using the stock bolt, washer, and provided (12) *10MMNUT* flange nut. Torque muffler mount bolt to 25Nm (2.5 kg-m, 18 ft-lb). Do not torque (9) *27-61M* exhaust clamp at this time. See assembly diagram for proper orientation of hardware.
9. Standing at the back of the motorcycle, check for proper alignment of the muffler. Adjust if necessary.

Note<sup>1</sup>: To adjust fitment, it may be necessary to rotate the tailpipe and/or the muffler independently until proper alignment is achieved.

Note<sup>2</sup>: You will be installing a securing rivet into the left tailpipe to prevent the tailpipe from rotating while the motorcycle is in operation.

10. Using the securing hole on the left side tailpipe as a guide, drill a  $\frac{13}{64}$ " hole through the securing hole and into the stock header.

**CAUTION** Always wear eye protection when using any power tools.

11. Insert (8) *S-RIVET* securing rivet into the drilled hole and slide (9) *27-61M* exhaust clamp over the rivet. Torque left and right exhaust clamp to 20Nm (2.0 kg-m, 14 ft-lb).
12. Install (6) *13150-YHSR* right tailpipe heatshield onto (2) *13150-427* right tailpipe using the provided (10) *RC116HSB* button head screws. See assembly diagram for proper orientation.
13. Install (7) *13150-YHSL* left tailpipe heatshield onto (1) *13150-426* left tailpipe using the provided (10) *RC116HSB* button head screws. See assembly diagram for proper orientation.
14. Before starting motorcycle, check for proper clearance between new exhaust system and rear suspension (i.e. tire, swing arm, brakes, rear shock, and etc.) If any problem is found, please carefully follow through the installation steps again. If problem still persists, please call Yoshimura Tech Department at (800) 634-9166 / in CA (909) 628-4722.

15. It is recommended that the muffler and tailpipe be wiped down with rubbing alcohol to remove oil and fingerprints. This will help prevent tarnishing of the finish after the exhaust is heated up.

Note: After starting motorcycle, it is normal for new exhaust system and muffler to emit smoke until oil residue burns off.

## **NOISE EMISSION WARRANTY**

Yoshimura warrants that this exhaust system, at time of sale, meets all applicable U.S. E.P.A. Federal noise standards. This warranty extends to the first person who buys this exhaust system for purposes other than resale, and to all subsequent buyers. Warranty claims should be directed to Yoshimura R&D of America, Inc. 5420 Daniels St. Chino, CA 91710 | Tel (800) 634-9166

## **TAMPERING PROHIBITION**

Federal law prohibits any modification to this exhaust system which causes the motorcycle to exceed the Federal noise standard. Use of the motorcycle with such a modified exhaust system is also prohibited.

Acts likely to constitute tampering include removal or puncturing the muffler, baffles, header pipes, or any other component which conducts exhaust gases.

**WARNING: This product should be checked for repair or replacement if the motorcycle noise has increased significantly through use. Otherwise, the owner may become subject to penalties under state and local ordinances.**