



RACE SERIES

Qualified Manufacturer Declared "Modified Part"

APPLICATION

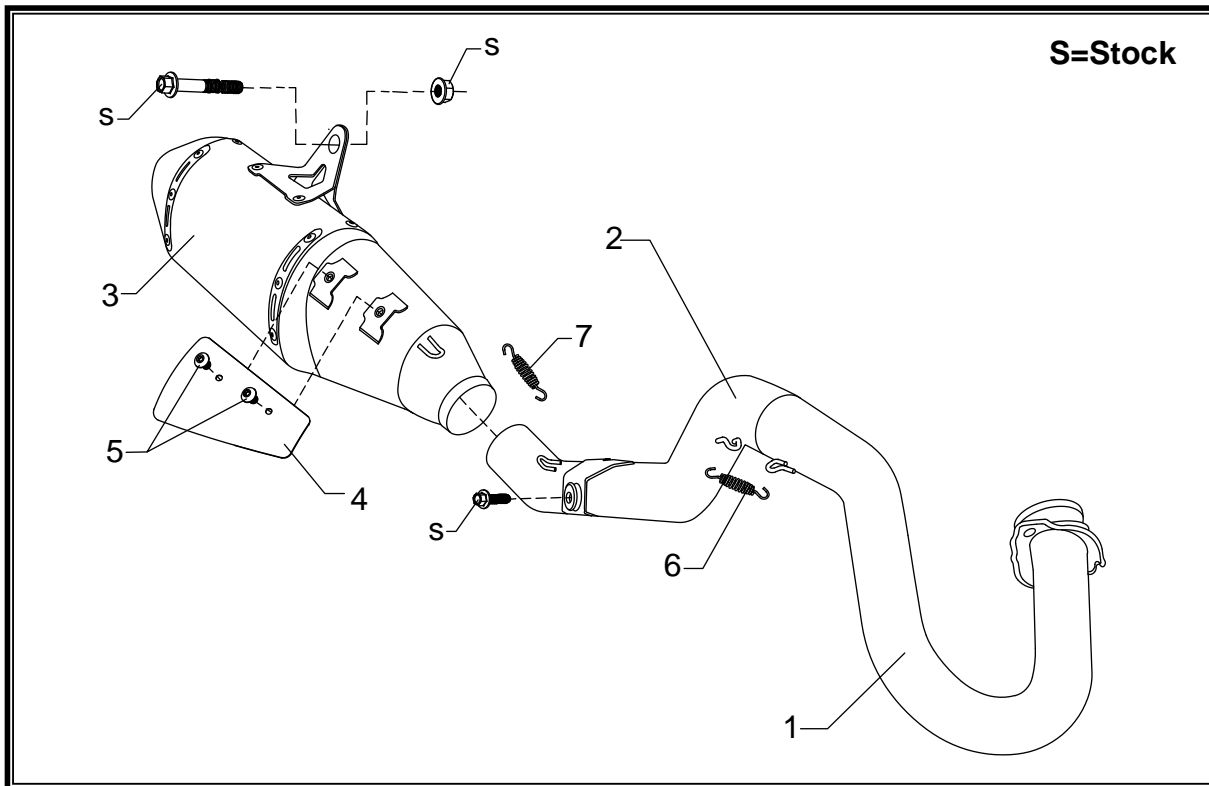
YEAR	MODEL
2013-2016	Honda CRF250L

PRODUCT

123500D521	RS4 SS Full-System Exhaust System with Stainless Steel Sleeve; Carbon Fiber Endcap
------------	--

FOR CLOSED COURSE COMPETITION ONLY; NOT INTENDED FOR STREET USE

!	<i>This product is designed for use in closed course racing and is not intended for highway use. In the state of California, it is illegal to modify the emission control system, which includes the fuel injection of any vehicle.</i>
!	<i>You must know how to remove and replace your stock exhaust in order to install this product otherwise have it installed by a professional mechanic. Keep all stock parts from your existing system as some components may be necessary to install your new Yoshimura exhaust depending on the application.</i>
!	<i>Read through all instructions before beginning installation. Exhaust system can be extremely hot. Let motorcycle cool down before beginning installation. Always wear hand and eye protection and take precautionary measures to avoid injury.</i>



No.	Part #	Description	Qty
1	12350-401	Yoshimura Header	1
2	12350-419-1	Yoshimura Tailpipe	1
3	123500D521-RMA	Yoshimura Muffler	1
4	12350-HS	Yoshimura Heatshield	1
5	RC116HSB-BK	6mm x 8mm Flanged Button Head Screw	2
6	RACE-SPS-1	Medium Exhaust Spring	1
7	RACE-SPX-1	Small Exhaust Spring	1
**	347PLUG	Muffler Wash Plug	1
**	ST-200	Spring Puller Tool	1
**	17029	Yoshimura Sticker Sheet	1

-TOOLS REQUIRED-

Metric Socket Set • Combination Wrench Set • Torque Wrench • Metric Allen Wrench Set

-REMOVAL-

- 1. Remove right side cover to access exhaust clamp.***
- 2. Loosen stock exhaust clamp.***
- 3. Remove the stock muffler cover to access muffler mount bolt.***

Note: The stock muffler cover will not be used with the Yoshimura system.

- 4. Remove stock chassis mount bolt securing tailpipe to frame.***
- 5. While securely supporting the stock muffler assembly, remove the muffler mount bolt and carefully remove stock muffler.***
- 6. Remove header nuts and remove stock header.***

Note: Stock exhaust port gaskets will be re-used with the Yoshimura Full-System Exhaust. Inspect gasket and replace if necessary.

-INSTALLATION-

- 1. Install Yoshimura header using the stock header nuts. Do not torque header nuts at this time.***
- 2. Install Yoshimura tailpipe onto Yoshimura header and secure using stock chassis mount bolt. Do not torque chassis mount bolt at this time.***
- 3. Install Yoshimura muffler assembly by sliding onto Yoshimura tailpipe.***
- 4. Secure muffler to muffler mount using the stock muffler mount bolt and nut. See diagram for proper orientation and order of hardware. Torque muffler mount bolt to factory specification.***
- 5. Torque chassis mount bolt to factory specification.***
- 6. Torque header nuts to factory specification.***
- 7. Install small exhaust spring between muffler and tailpipe.***
- 8. Install medium exhaust spring between tailpipe and header.***
- 9. Before starting motorcycle, check for proper clearance between new exhaust system and rear suspension (i.e. tire, swing-arm, brake, rear shock, engine, and etc.) If any problem is found, please carefully follow through the installation steps again. If problem still persists, please call Yoshimura Tech Department at (800) 634-9166 / in CA (909) 628-4722.***
- 10. It is recommended that the muffler and tailpipe be wiped down with rubbing alcohol to remove oil and fingerprints. This will help prevent tarnishing of the finish after the exhaust is heated up.***

NOTE: After starting motorcycle, it is normal for new exhaust system and muffler to emit smoke until oil residue burns off.