



YOSHIMURA

RESEARCH&DEVELOPMENT OF AMERICA, INC.

5420 DANIELS STREET STE A, CHINO CA 91710 · (800) 634-9166 · (909) 628-4722 · FAX (909) 591-2198

www.yoshimura-rd.com

RACE SERIES

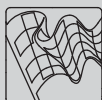
Qualified Manufacturer Declared "Modified Part"

2017~2018

Honda CBR1000RR
12202AP520 (SS/CF)

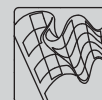
Works Finish
Alpha Taper Full-System

FOR CLOSED COURSE COMPETITION ONLY; NOT INTENDED FOR STREET USE



Race Series systems are:

- NOT CARB/EPA tail-pipe emissions compliant.
- NOT street legal.
- For "Closed Course Competition" use only.

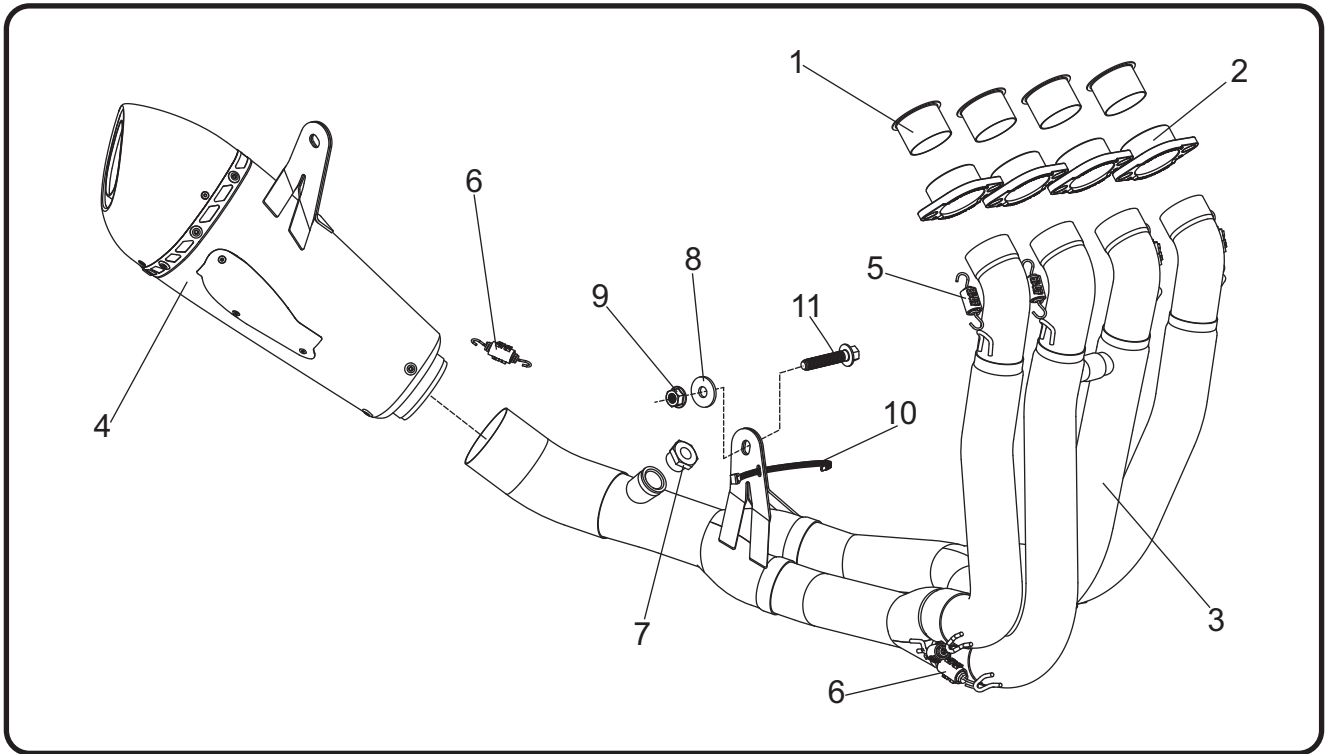


You must know how to remove and replace your stock exhaust in order to install this product otherwise have it installed by a professional mechanic. Keep all stock parts from your existing system as some components may be necessary to install your new Yoshimura exhaust depending on the application. Read through all instructions before beginning installation. Exhaust system can be extremely hot. Let motorcycle cool down before beginning installation. Always wear hand and eye protection and take precautionary measures to avoid injury.



NOTE: IN THE STATE OF CALIFORNIA, IT IS ILLEGAL TO MODIFY THE EMISSION CONTROL SYSTEM, WHICH INCLUDES THE CARBURETORS OF ANY VEHICLE.

Assembly Diagram



No.	Item	Description	Qty.
1	12202SMT	Yoshimura Manifold	4
2	12202SDY	Yoshimura Flange	4
3	12202-404	Yoshimura Header	1
4	12202AP520-RMA	Yoshimura Muffer Assembly	1
5	RACE-SPX-1	Small Exhaust Spring	4
6	RACE-SPS-1	Medium Exhaust Spring	5
7	OXYBA12X125SS	O2 Sensor Adapter	1
8	8MMWASHERL	8mm Large Washer	1
9	8MMNUT	8mm Flange Nut	1
10	ZT-200	Cable Tie	2
11	M8X40H	8mm x 40mm Flanged Hex Head Bolt	1
**	INS-27-K	Low Volume Insert	1
**	ST-200	Spring Puller Tool	1
**	17029	Sticker Kit Sheet	1

** Not shown in diagram.

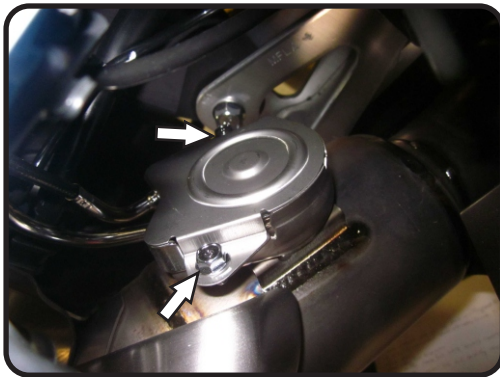
CAUTION: Exhaust system can be extremely hot. Let motorcycle cool down before beginning installation. Always wear hand and eye protection and take precautionary measures to avoid injury.

WARNING: Always properly support vehicle with a stand and/or lift when servicing or performing any work. Unstable vehicles may present dangerous conditions and may cause property damage and/or personal injury.

NOTE: Read through all instructions before beginning installation.

Removal

1. Remove the lower cowl.
2. Remove left and right side fairings.
3. Locate the exhaust valve on the stock muffler and remove the two bolts securing the exhaust valve cover to access the cables. Remove exhaust valve cables from the stock muffler assembly.



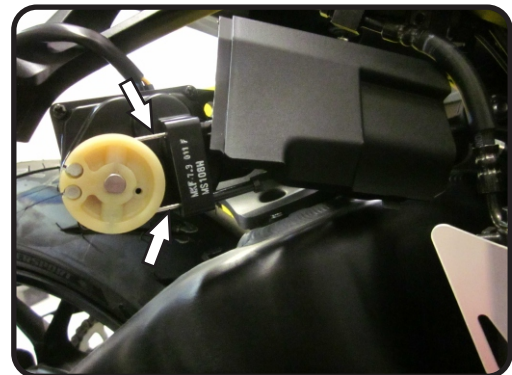
4. Loosen the muffler clamp bolt. While securely supporting the stock muffler assembly, remove the muffler mount bolt and carefully remove the stock muffler.
5. Remove rider seat. Locate and disconnect servo connector clipped onto the battery tray.
6. Remove servo motor cover bolt on the side and carefully lower the servo assembly.



7. Remove the servo cable cover bolt and remove cover to access cables.



8. Carefully remove cables from the servo cam and completely remove cables from motorcycle.



9. Re-install servo cable cover and bolt. Push servo assembly back up and secure using the servo motor cover bolt on the side.

10. Re-connect servo connector and clip onto battery tray.
11. Remove the lower radiator bracket.
12. Locate and disconnect O2 sensor connector and remove O2 sensor from the stock header.
13. Remove header chassis mount bolt. While securely supporting the header, remove header nuts and carefully remove the header assembly.

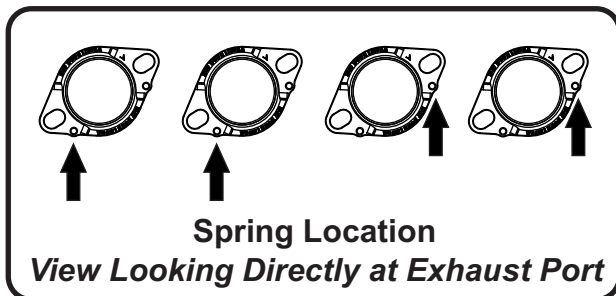
Note: The exhaust port gaskets will not be re-used. Remove from exhaust port.

Installation

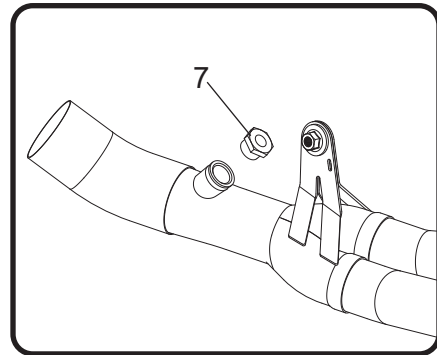
1. Install (No. 1) *12202SMT*, manifolds and (No. 2) *12202SDY*, flanges using the stock header nuts as shown.

Note¹: Exhaust port gaskets must be removed before installing manifold and flanges to ensure proper fitment and clearance.

Note²: Hook springs onto flange before installing header legs. Due to limited space, it may be difficult to hook springs onto flanges after header is installed.



2. Install (No. 3) *12202-404*, header by slipping each leg onto manifolds from one end to the other. Using a soft mallet, gently tap each header leg to make sure header is fully seated onto manifolds.
3. Align header chassis mount bracket to the frontside of chassis mount and secure using the (No. 11) *M8X40H*, bolt, (No. 8) *8MMWASHERL*, 8mm large washer, and (No. 9) *8MMNUT*, 8mm flange nut. Do not torque at this time.
4. Install (No. 7) *OXYBA12X125SS*, O2 sensor adapter into (No. 3) *12202-404*, header.

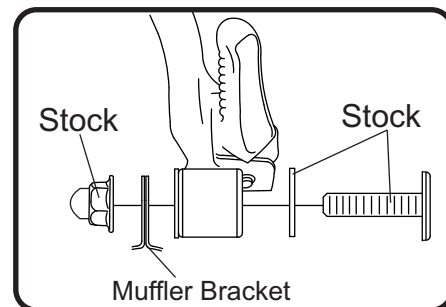


5. Re-route O2 sensor wire toward the back of the alternator cover and through the channel on the backside of the sprocket cover. Re-connect O2 sensor connector and install O2 sensor into header. Torque to factory specifications. Secure O2 sensor wire to header chassis mount bracket using the supplied cable ties as shown on the assembly diagram.

Note: Verify that the O2 sensor wire is not touching moving components or parts that emit extreme heat during operation.



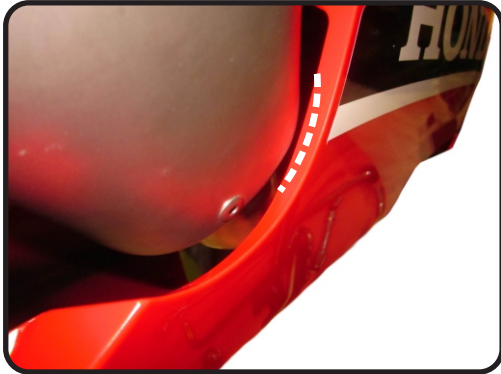
6. Install muffler over the header outlet and align to the backside of muffler mount. Secure using the stock muffler mount bolt, washer, and nut. Torque to factory specifications.



7. Install (No. 6) *RACE-SPS-1*, medium exhaust spring between muffler and header.
8. Torque header chassis mount bolt to factory specifications.

9. Torque header nuts to factory specification and hook header flange springs to header legs.
10. Re-install lower radiator bracket.
11. Re-install left and right side fairings.
12. Re-install the lower cowl.

Note: If necessary, file or trim the lower cowl if additional clearance is required between lower cowl and muffler.



13. Re-install rider seat.
 14. Before starting vehicle, check for proper clearance between new exhaust system and rear suspension (i.e. tire, swingarm, brakes, rear shock, and etc.) If any problem is found, please carefully follow through the installation steps again. If problem still persists, please call Yoshimura Tech Department at (800) 634-9166 / in CA (909) 628-4722.
 15. It is recommended that the muffler and tailpipe be wiped down with rubbing alcohol to remove oil and fingerprints. This will help prevent tarnishing of the finish after the exhaust is heated up.
- Note: After starting vehicle, it is normal for new exhaust system and muffler to emit smoke until oil residue burns off.

Works Finish Care & Maintenance

Before starting vehicle, clean pipe thoroughly using a soft cloth and rubbing alcohol to remove any oil and finger prints.

The color of the exhaust will change once the system has gone through a heat cycle of 15 minutes or more. Color will vary depending on lean/rich conditions.

Clean using a soft cloth and soap. Do not use abrasive materials as it will scratch the surface.

Surface reconditioning services are available to remove scratches and undesirable discoloration due to extreme heat. Contact Yoshimura Tech Department at (800) 634-9166 / in CA (909) 628-4722 for more information.