



YOSHIMURA

RESEARCH&DEVELOPMENT OF AMERICA, INC.

5420 DANIELS STREET STE A, CHINO CA., 91710 · (800) 634-9166 · (909) 628-4722 · FAX (909) 591-2198

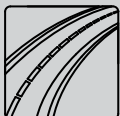
www.yoshimura-rd.com

Street Series

Qualified Manufacturer Declared "Replacement Part"

2008~2010
Suzuki GSX-R600/750
1170286 (SS/SS)
1170288 (SS/CF)

R-55 Stainless Steel Slip-On



All Street Series systems are:

- Slip-on/Bolt-on applications that do not require tampering with the vehicle's emissions control system.
- CARB/EPA tail-pipe emissions compliant.
- Marked with appropriate EPA noise labels.
- Not tested for EPA new vehicle noise compliance.



You must know how to remove and replace your stock exhaust in order to install this product otherwise have it installed by a professional mechanic. Keep all stock parts from your existing system as some components may be necessary to install your new Yoshimura exhaust depending on the application. Read through all instructions before beginning installation. Exhaust system can be extremely hot. Let motorcycle cool down before beginning installation. Always wear hand and eye protection and take precautionary measures to avoid injury.



NOTE: IN THE STATE OF CALIFORNIA, IT IS ILLEGAL TO MODIFY THE EMISSION CONTROL SYSTEM, WHICH INCLUDES THE CARBURETORS OF ANY VEHICLE.

Caution: Exhaust system can be extremely hot. Let motorcycle cool down before beginning installation.

Note: Read through all instructions before beginning installation.

Tools Needed:

Metric Socket Set
3/8" Ratchet and Extension
Metric Combination Wrench Set
Metric Allen Wrench Set
Torque Wrench

Installation Steps:

- 1 Remove the stock muffler heatshield (see Fig. 1 for bolt locations).
- 2 Remove the stock muffler and the stock muffler gasket (see Fig. 2 for bolt locations).
- 3 Slide a new stock muffler gasket over the outlet of the stock underbelly muffler (a new stock muffler gasket is not supplied).
- 4 Unbolt the stock right rearset from the stock right adjustable mounting plate (see Fig. 3 for bolt locations).
- 5 Unhook the spring from the rear brake light switch.
- 6 Sandwich the Yoshimura R55 aluminum muffler bracket between the stock right rearset and the stock right adjustable rearset mounting plate using the stock rearset mounting bolts (see Fig. 4).
- 7 Torque the stock right rearset bolts to 2.8 kgf-m (20 lb-ft).
- 8 Reinstall the rear brake light switch spring.
- 9 Slide the supplied exhaust clamp over the inlet of the Yoshimura R55 muffler. Transfer the stock clamp rubber grommet from the stock clamp to the supplied Yoshimura muffler clamp.
- 10 Slide the Yoshimura R55 muffler onto the stock underbelly muffler.

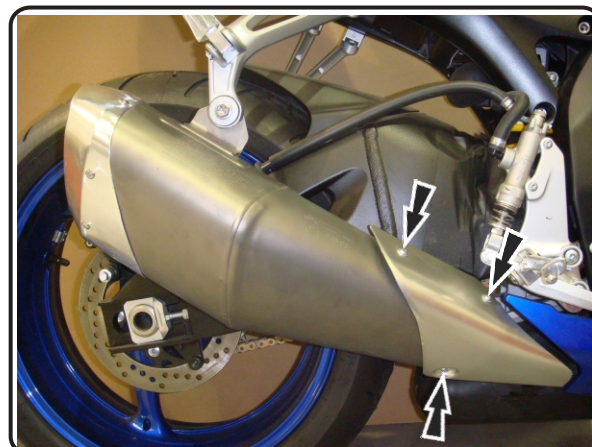


Fig. 1

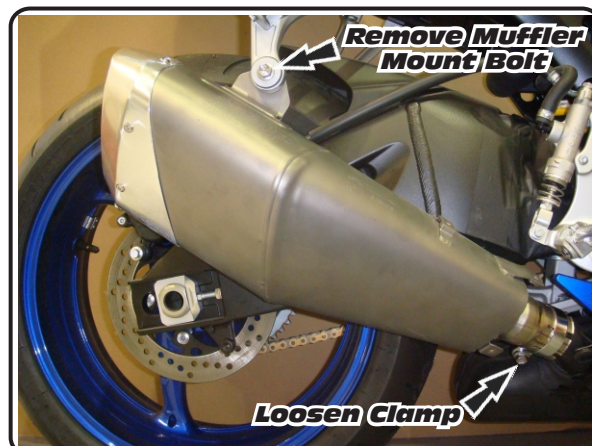


Fig. 2

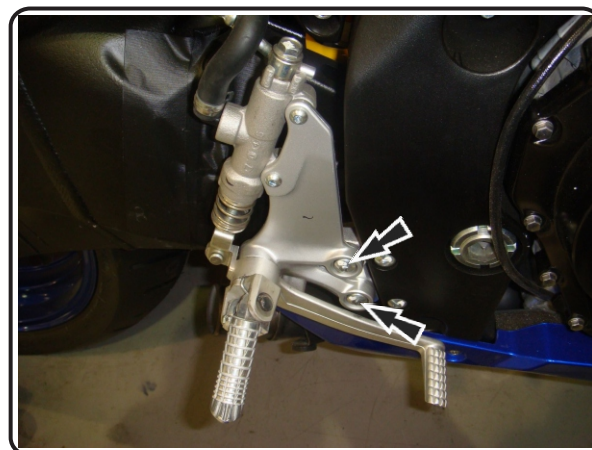


Fig. 3

- 11 Mount the R55 muffler to the outside of the R55 mounting bracket using the supplied bolt, supplied washer, and supplied spacer nut (see Fig. 4 and the Parts Diagram on page 4).
- 12 Torque the muffler mount bolt to 2.3 kgf-m (16.5 lb-ft).
- 13 Torque the supplied collector clamp to 1.1 kgf-m (8 lb-ft).
- 14 Install the Yoshimura heatshield onto the R55 muffler using the supplied heatshield bolts (see Fig 4).
- 15 It is recommended that the muffler and tailpipe be wiped down with rubbing alcohol to remove oil and fingerprints. This will help prevent tarnishing of the finish after the exhaust is heated up.
- 16 Check for proper clearance between new exhaust system and motorcycle (i.e. Swing-arm, body work, etc.). If any problem is found, please carefully follow through the installation steps again. If problem still persists, please call Yoshimura technical department at (800)634-9166 / in CA (909)628-4722.

NOTE: After starting motorcycle, it is normal for new exhaust system and muffler to smoke until oil residue burns off.

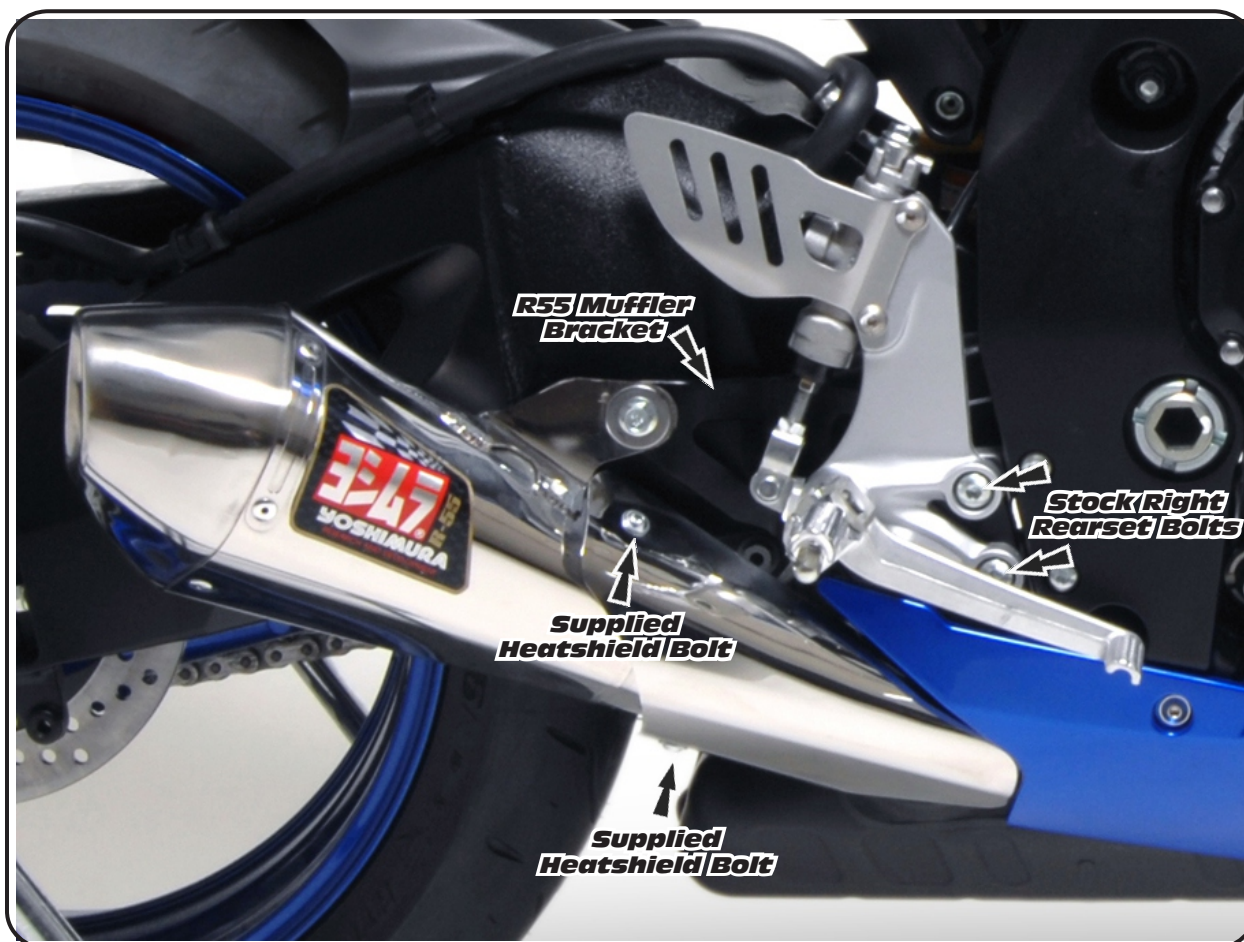
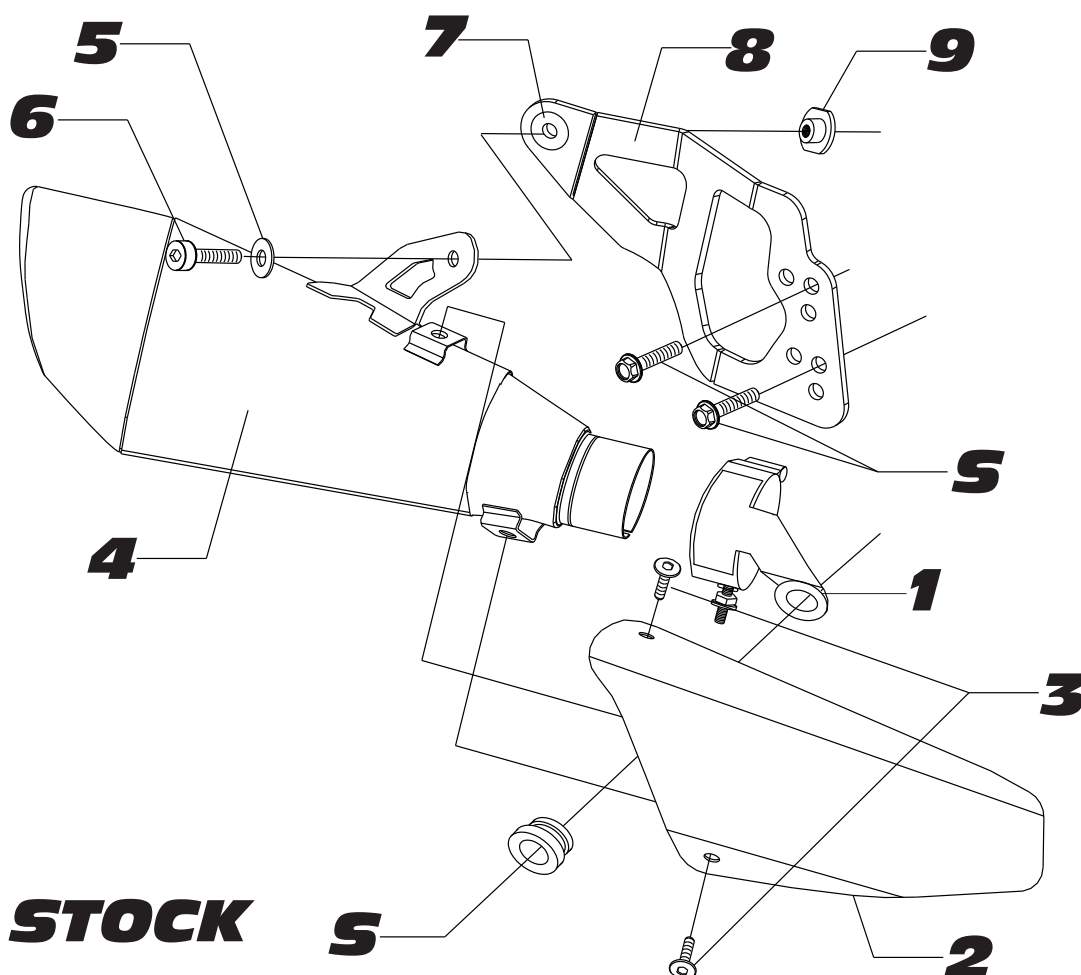


Fig. 4

#117028(6,8)


Parts Diagram

NO.	DESCRIPTION	QTY	PART #
1	Exhaust Collector Clamp	1	1170-CLAMP
2	Yoshimura Stainless Steel Heatshield	1	1170285-HS
3	Heatshield Bolts	2	RC116HSB
4	Yoshimura R55 Muffler with Stainless Steel Endcap with Carbon Fiber Endcap	1	1170286-RMA 1170288-RMA
5	Stainless Steel Washer	1	8MMWASHER-SS
6	8mm x 20mm Button Head Bolt	1	M8X20BHS
7	Rubber Grommet	1	Z1022
8	R55 Muffler Mount Bracket	1	1104MBR55-B
9	Aluminum Spacer Nut	1	SPCR-NUT-B
**	Yoshimura Vinyl Sticker	1	17029