



YOSHIMURA

RESEARCH&DEVELOPMENT OF AMERICA, INC.

5420 DANIELS STREET STE A, CHINO CA., 91710 · (800) 634-9166 · (909) 628-4722 · FAX (909) 591-2198

www.yoshimura-rd.com

RACE SERIES

Qualified Manufacturer Declared "Modified Part"

2017~2018

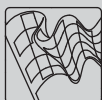
SUZUKI GSX-R 1000

11182AP520 (SS/CF)

11182PP720 (TI/CF)

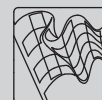
Alpha Taper Full-System

FOR CLOSED COURSE COMPETITION ONLY; NOT INTENDED FOR STREET USE



Race Series systems are:

- NOT CARB/EPA tail-pipe emissions compliant.
- NOT street legal.
- For "Closed Course Competition" use only.

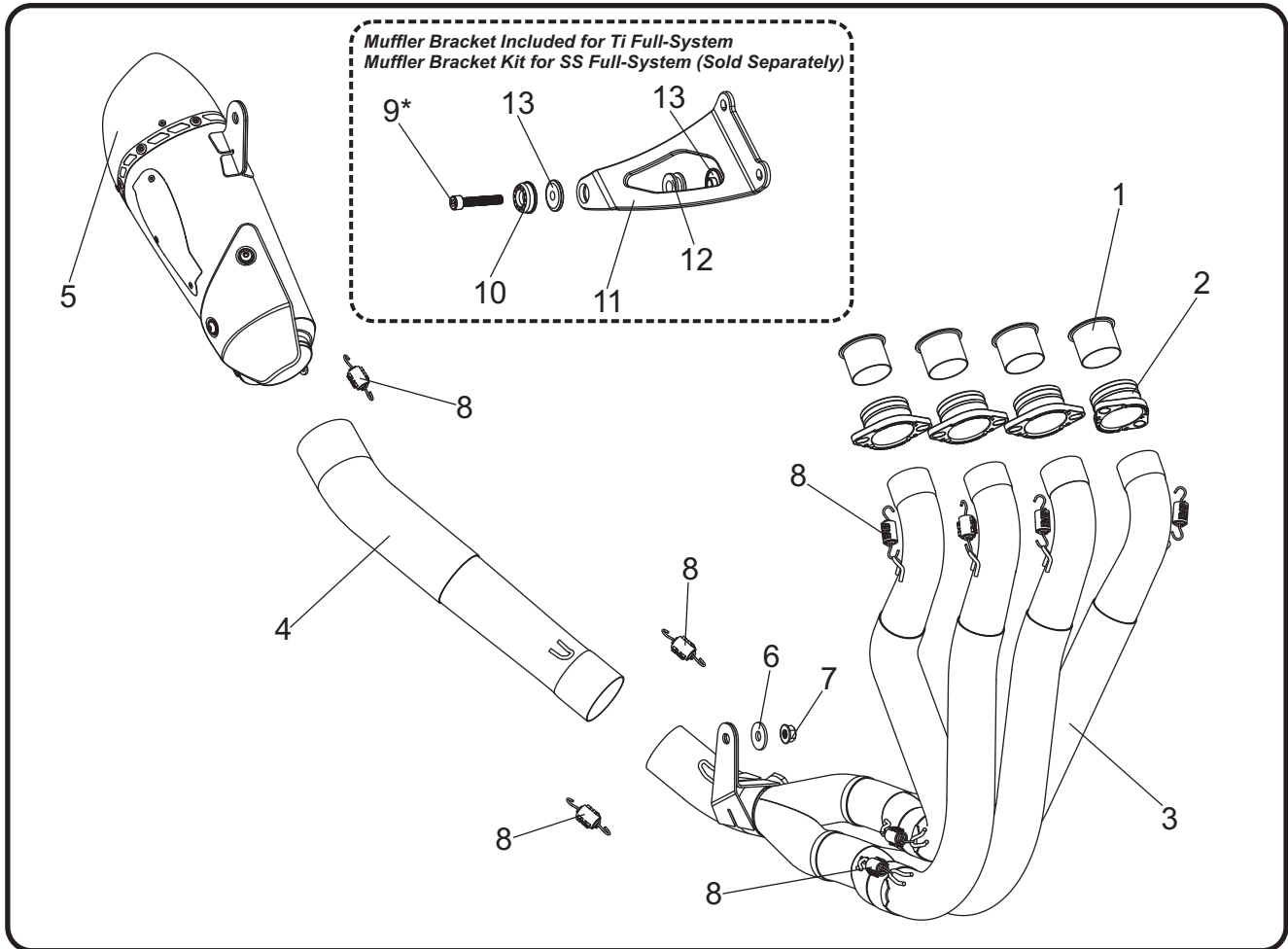


You must know how to remove and replace your stock exhaust in order to install this product otherwise have it installed by a professional mechanic. Keep all stock parts from your existing system as some components may be necessary to install your new Yoshimura exhaust depending on the application. Read through all instructions before beginning installation. Exhaust system can be extremely hot. Let motorcycle cool down before beginning installation. Always wear hand and eye protection and take precautionary measures to avoid injury.



NOTE: IN THE STATE OF CALIFORNIA, IT IS ILLEGAL TO MODIFY THE EMISSION CONTROL SYSTEM, WHICH INCLUDES THE CARBURETORS OF ANY VEHICLE.

Assembly Diagram



No.	Item	Description	Qty.
1	1118SMT	Yoshimura Manifold	4
2	1118SDY-1	Yoshimura Flange	4
3	11182-404 11182-704	Yoshimura Stainless Steel Header Yoshimura Titanium Header	1
4	11182-419 11182-719	Yoshimura Stainless Steel Tailpipe Yoshimura Titanium Tailpipe	1
5	11182AP520-RMA 11182PP720-RMA	Yoshimura Stainless Steel Muffler Assembly Yoshimura Titanium Muffler Assembly	1
6	8MMWASHERL	8mm Large Washer	1
7	8MMNUT	8mm Flange Nut	1
8	RACE-SPX-1	Small Exhaust Spring	11
9	M8X45	8mm x 45mm Socket Head Bolt	1
9*	M8X35	8mm x 35mm Socket Head Bolt	1
10	M8ALCSW-00	8mm Aluminum Countersink Washer	1
11*	11182AB	Aluminum Muffler Bracket	1
12*	Z1023	Rubber Grommet	1
13*	ALS-043	Aluminum Spacer	2
**	GRMT	Header Grommet	1
**	B6449	O2 Sensor Harness	1
**	11600-CKRPLT	EXCV Stopper Plate	1
**	ST-200	Spring Puller Tool	1
**	OXYBA12X125SS	O2 Sensor Bung Adapter	1
**	INS-27-K	Low Volume Sound Insert	1
**	ZT-300	Cable Ties	3
**	17029	Sticker Sheet	1

* Included in Titanium Full-System only.
 ** Not Shown on diagram.

Important Advisory

Failure to adjust the Traction Control setting as outlined below may result in extremely high exhaust gas temperatures which will deplete muffler packing and shorten the maintenance period of the muffler.

To extend the life of the muffler packing, it is highly recommended to adjust Traction Control when operating under the following conditions:

- Set to "1" or "OFF" when using OEM tire diameter with OEM gear ratio.
- Set to "OFF" when using different tire diameter and/or different gear ratio from OEM.



Always follow procedure in owners manual to adjust Traction Control setting when riding for closed course competition with the stock ECU.

CAUTION: Exhaust system can be extremely hot. Let motorcycle cool down before beginning installation. Always wear hand and eye protection and take precautionary measures to avoid injury.

WARNING: Always properly support vehicle with a stand and/or lift when servicing or performing any work. Unstable vehicles may present dangerous conditions and may cause property damage and/or personal injury.

NOTE: Read through all instructions before beginning installation.

Removal

1. Remove left and right side tank covers to access rider seat bolts.
 2. Remove rider and passenger seat.
 3. Remove the passenger seat latch assembly.
 4. Remove upper and lower rear cowl.
 5. Remove left and right side fairings.
 6. Remove the three nuts securing EXCVA cover to the header and remove the exhaust valve cables from the header.
 7. Remove the four bolts securing rear fender to subframe to access EXCVA motor.
 8. Remove the cable spring clip on EXCVA motor.
 9. Using a wrench, hold the EXCVA pulley and remove the pulley bolt.
- Note¹: Do not rotate EXCVA pulley manually. Doing so may damage the internal gears of the EXCVA motor.
- Note²: Do not disconnect EXCVA connector. Doing so may cause error codes to appear and possibly cause the vehicle to operate in a power limited fail safe mode.
10. Remove the EXCVA pulley and cables as it will not be used with the Yoshimura full-system.

Note: The EXCVA pulley bolt will be re-used.

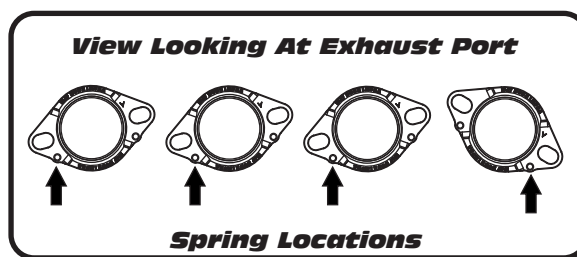
11. Remove muffler heatshield bolt and remove heatshield.
12. Loosen the muffler exhaust clamp.
13. While securely supporting the stock muffler assembly, remove the muffler mount bolt and carefully remove the stock muffler assembly.
14. Locate and disconnect O2 sensor wire connector and remove from the stock header assembly.
15. Remove header exhaust valve cable from bendable clamp located on the oil pan.
16. Remove the header chassis mount bolt.
17. While securely supporting the stock header, remove the header flange bolts and carefully remove the stock header.

Note: The stock exhaust port gaskets will not be used with the Yoshimura full-system. Remove from exhaust port before proceeding to installation.

Installation

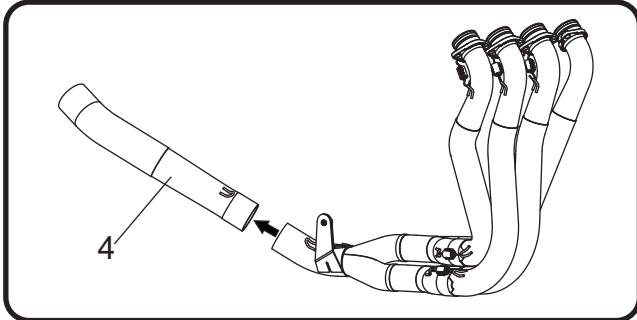
1. Install (No. 1) 1118SMT, manifolds and (No. 2) 1118SDY-1, flanges using the stock header flange bolts. See below for proper flange orientation. Do not torque at this time.

Note: Hook springs onto flange before installing header legs. Due to limited space, it may be difficult to hook springs onto flanges after header is installed.



2. Install (No. 3) 11182-404/704, header by slipping each leg onto manifolds from one end to the other. Using a soft mallet, gently tap each header leg to make sure header is fully seated to the manifolds.
3. Align header chassis mount bracket to the backside of chassis mount and secure using the stock bolt and (No. 6) 8MMWASHERL, 8mm large washer and (No. 7) 8MMNUT, 8mm flange nut. Do not torque at this time.

4. Torque header flange nuts to factory specification.
5. Hook header flange springs to header legs.
6. Install (No. 4) 11182-419/719, tailpipe inlet over header outlet.

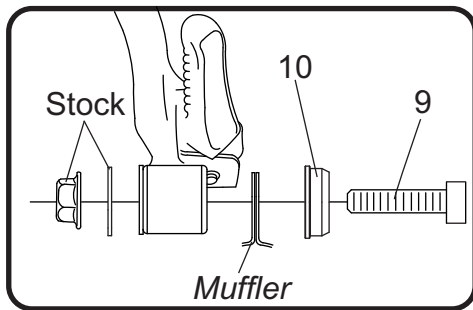


7. Install (No. 5) *muffler*, over tailpipe outlet.

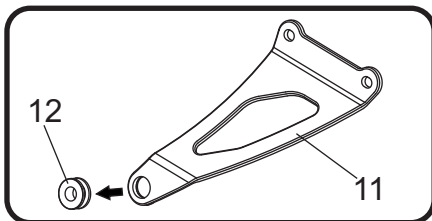
Note¹: For SS full-system, follow steps "7a".
For Ti full-system, follow steps "7b".

Note²: The Yoshimura aluminum muffler bracket is included only in the Ti full-system and is sold separately for SS full-system.

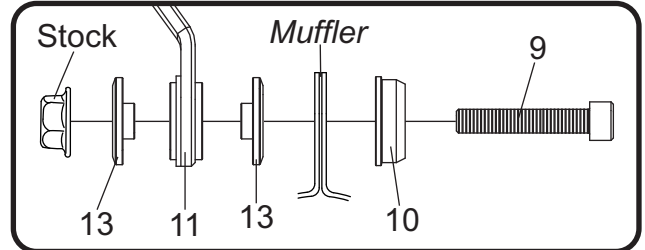
- 7a. Align muffler bracket to the frontside of the stock muffler mount and secure using (No. 9) M8X45, bolt, (No. 10) M8ALCSW-00, countersink washer, and stock nut.



- 7b. 1) Remove passenger footpeg bracket bolts and remove passenger footpeg bracket.
- 2) Install (No. 11) 11182AB, aluminum muffler bracket using the stock bolts.
- 3) Install (No. 12) Z1023, rubber grommet into (No. 11) 11182AB, aluminum muffler bracket.



- 4) Install (No. 13) ALS-043, aluminum spacers into (No. 12) Z1023, rubber grommet and align muffler to (No. 11) 11182AB, aluminum muffler bracket as shown. Secure muffler using (No. 9) M8X35, bolt, (No. 10) M8ALCSW-00, countersink washer, and stock nut.

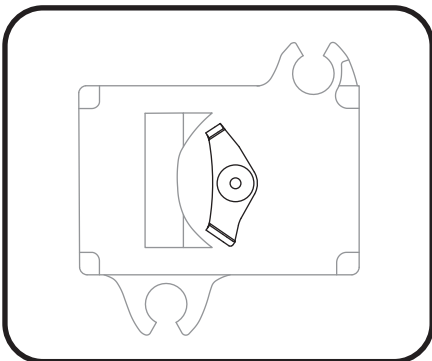


8. Torque muffler bolt to 23 Nm (2.3 kg-m, 17 ft-lb).
9. Torque header chassis mount bolt to factory specification.
10. Install (No. 8) RACE-SPX-1, exhaust springs between muffler to tailpipe and tailpipe to header connections.
11. Install OXYBA12X125SS, O2 sensor bung adapter into header and re-install the stock O2 sensor. Torque to factory specification.
12. Connect B6449, O2 sensor extension harness to the O2 sensor connector on the stock harness. Route wires as shown below and connect O2 sensor connector to the extension harness and secure using supplied cable ties.

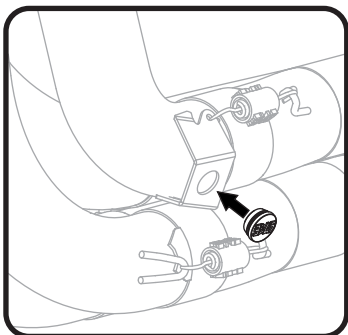


13. Install *11600-CKRPLT*, EXCV stopper plate onto EXCVA motor using the stock pulley bolt. Securely hold stopper plate and torque bolt to factory specification.

Note: The tabs must point up when installing the EXCV stopper plate.



14. Re-install lower rear cowl.
15. Re-install passenger seat latch assembly.
16. Re-install upper rear cowl.
17. Install *GRMT*, header grommet onto header.



18. Re-install left and right side fairing.
19. Re-install passenger and rider seat.
20. Re-install left and right tank side covers.
21. Before starting vehicle, check for proper clearance between new exhaust system and rear suspension (i.e. tire, swingarm, brakes, rear shock, and etc.) If any problem is found, please carefully follow through the installation steps again. If necessary, trim fairing for proper clearance between exhaust system and other components. If problem still persists, please call Yoshimura Tech Department at (800) 634-9166 / in CA (909) 628-4722.

22. It is recommended that the muffler and tailpipe be wiped down with rubbing alcohol to remove oil and fingerprints. This will help prevent tarnishing of the finish after the exhaust is heated up.

Note: After starting motorcycle, it is normal for new exhaust system and muffler to emit smoke until oil residue burns off.

Works Finish Care & Maintenance

Before starting vehicle, clean pipe thoroughly using a soft cloth and rubbing alcohol to remove any oil and finger prints.

The color of the exhaust will change once the system has gone through a heat cycle of 15 minutes or more. Color will vary depending on lean/rich conditions.

Clean using a soft cloth and soap. Do not use abrasive materials as it will scratch the surface.

Surface reconditioning services are available to remove scratches and undesirable discoloration due to extreme heat. Contact Yoshimura Tech Department at (800) 634-9166 / in CA (909) 628-4722 for more information.