

HONDA PCX STREET SPORTS EXHAUST SYSTEM TRI-OVAL

Be sure to read the instruction carefully before starting the work. It is necessary to follow the contents for installing Yoshimura Exhaust System.

REFERENCE Yoshimura Japan recommends silencer inner wool repacking every 5,000km (3,000miles) in order to get Yoshimura exhaust performance fully. Climate, riding condition, and frequency of ride are direct contributing factors for inner wool worn out. Keeping high engine revolution also promotes further wool consumption. Weigh new silencer assy (or silencer assy after repacking) and record the weight in order to compare with weight after use. For silencer repacking, please contact local Yoshimura Japan distributor for further information.

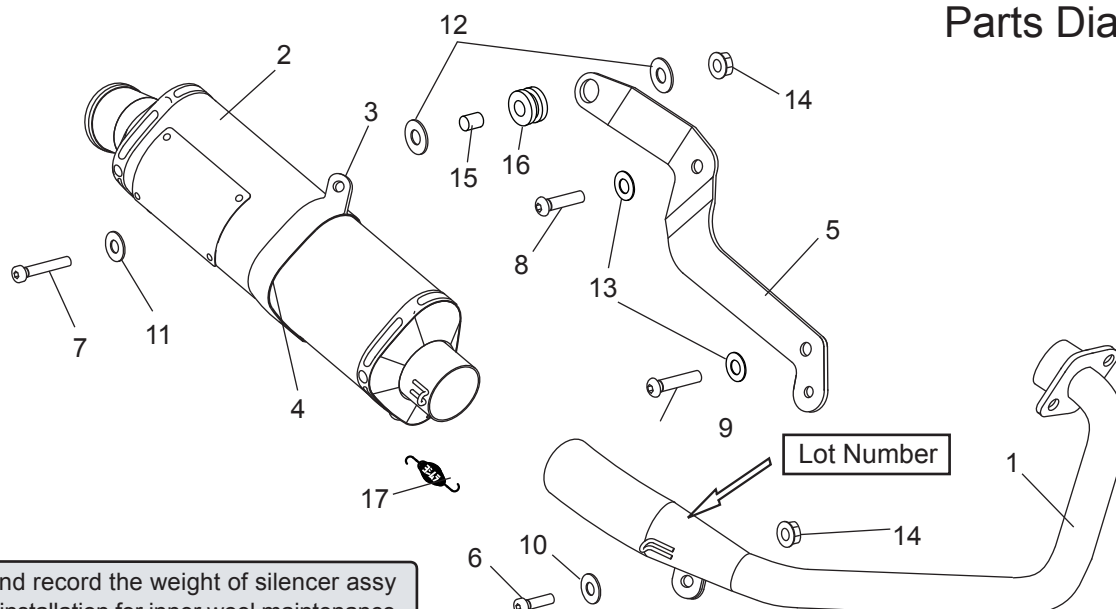
1. Product Information:

Description	Honda PCX Street Sports Exhaust System Tri-Oval	Part Number	Stainless Sleeve ; 180-490-5350
Cyclone Type	HR490STO11		Metal Magic Sleeve ; 180-490-5320
Main Material	Stainless Steel	Part Number (dB killer applicable model /dB killer is not included.)	Titanium Sleeve ; 180-490-5380
Applicable Model	Honda PCX		Stainless Sleeve ; 180-490A5350
Weight [STD Weight; 4.5kg]	(SS)&(SM) ; 2.5kg / (ST) ; 2.4kg		Metal Magic Sleeve ; 180-490A5320
			Titanium Sleeve ; 180-490A5380

2. Contents:

No.	Descriptions	Part No.	Q'ty	No.	Descriptions	Part No.	Q'ty
1	Exhaust Pipe	181-490-5100	1	9	Button Bolt M10x45 P1.25	803-210-5045	1
2	Silencer Assy (Stainless Sleeve)	186-303-5352	1	10	Washer M8x16	812-108-1612	1
	Silencer Assy (Metal Magic Sleeve)	186-303-5322		11	Washer M8x20	812-108-2000	1
	Silencer Assy (Titanium Sleeve)	186-303-5382		12	Washer M8x26	812-108-2600	2
3	Silencer Band	162-30R-7500	1	13	Conical Spring Washer M10	810-210-0000	2
4	Silencer Band Rubber	896-005-2903	1	14	Flange Nut M8	823-008-1250	2
5	Silencer Bracket	161-490-0300	1	15	Grommet Spacer	850-208-1212	1
6	Cap Bolt M8x20	800-208-5020	1	16	Grommet Rubber	553-565-0000	1
7	Cap Bolt M8x30	800-208-5030	1	17	Exhaust Spring (Floating)	118-001-0000	1
8	Button Bolt M10x30 P1.25	803-210-5030	1				

Parts Diagram



Note and record the weight of silencer assy before installation for inner wool maintenance.