

HYPHERPRO

STEERING DAMPER MOUNTING KIT

for

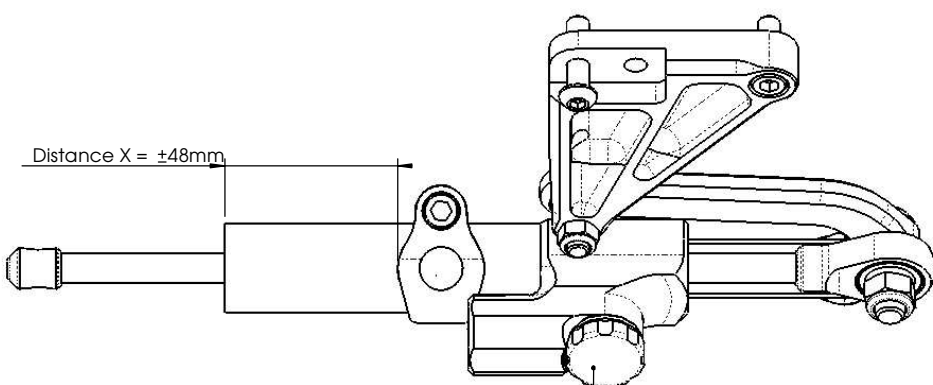
SUZUKI GSX1400

Model 2002>

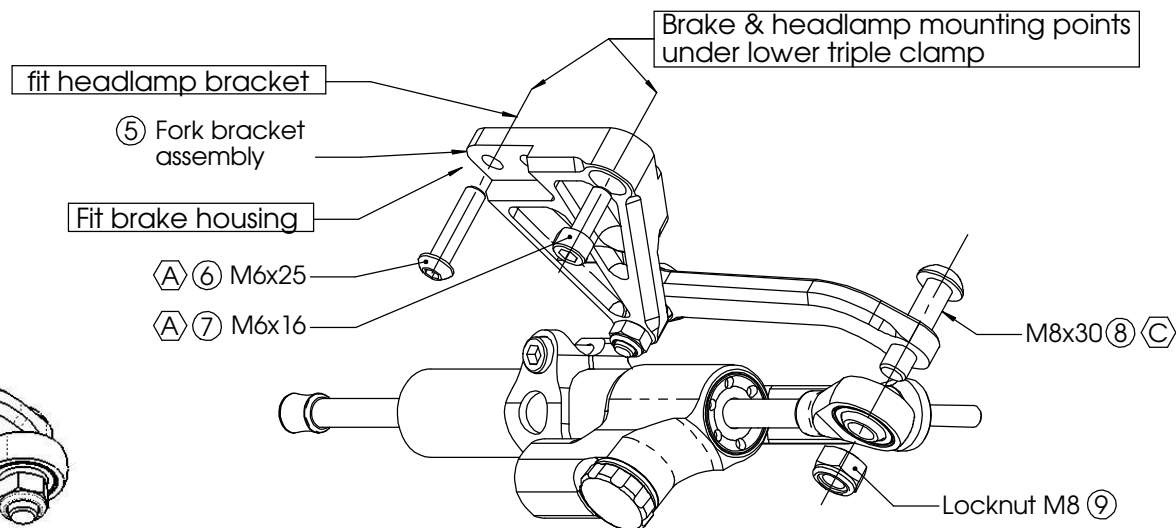
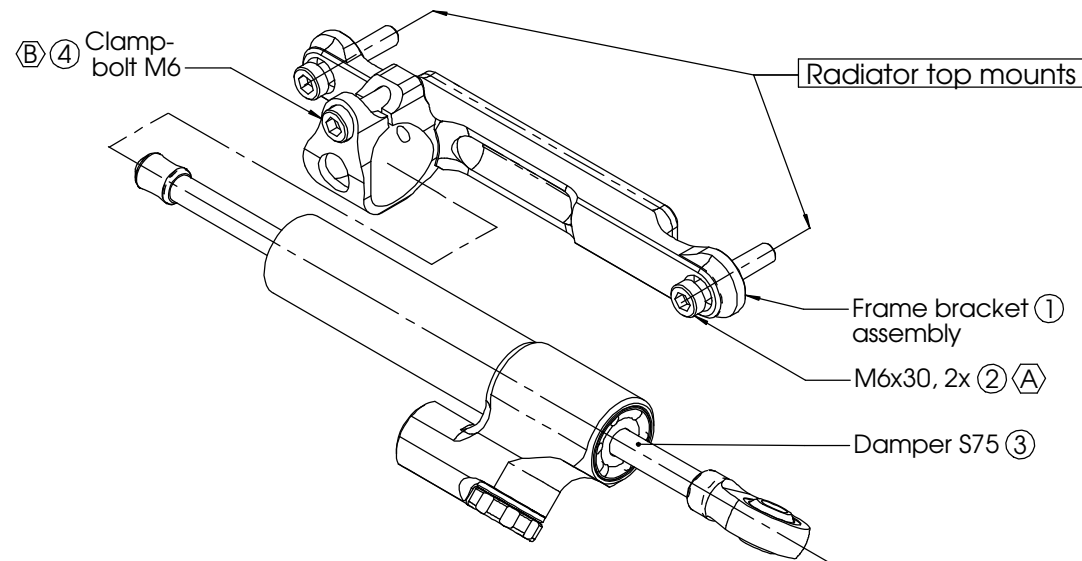
MK-SU14-B001 PART LIST

SD stroke 75	1	Steering limiters 5mm	2
Fork bracket assy	1	-	-
Frame bracket assy	1	-	-
M6x16	1	-	-
M6x25 Button head	1	-	-
M6x30 Low head	2	-	-
M8x30 Button head	1	-	-
Locknut M8	1	-	-

ALL IDEAS, DESIGNS, ARRANGEMENTS AND PLANS INDICATED OR REPRESENTED BY THIS DRAWING ARE OWNED BY HYPERPRO AND WERE CREATED, EVOLVED AND DEVELOPED FOR USE ON AND IN CONNECTION WITH THE SPECIFIC PROJECT. NONE SUCH IDEAS, DESIGNS, ARRANGEMENTS OR PLANS SHALL BE USED BY OR DISCLOSED TO ANY PERSON, FIRM OR CORPORATION FOR ANY PURPOSE WHATSOEVER WITHOUT THE WRITTEN PERMISSION OF HYPERPRO.



DAMPING ADJUSTER KNOB:
 - turn CW to increase damping
 - turn CCW to decrease damping



1
of 2

- (A) 5-9Nm / 44-80Lbs.In / 4.0-6.4Lbs.Ft
- (B) 6Nm / 53Lbs.In / 4.4Lbs.Ft
- (C) 14-17Nm / 124-150Lbs.In / 10.3-12.5Lbs.Ft

See WWW.HYPERPRO.COM for the latest pictures, modifications, specs. and e-drawings of this steering damper kit.

HYPERPRO

STEERING DAMPER MOUNTING KIT

for

SUZUKI GSX1400 Model 2002>

MK-SU14-B001 INSTALLATION INSTRUCTIONS

In general:

HYPERPRO can not be held responsible in any way for any form of physical, material, financial or other damage arising from use, assembly or overhaul of HYPERPRO products. HYPERPRO reserves the right to make changes without prior notice.

This product is only to be used for the motorcycle brand, model and year stated specifically on top of the pages of this manual.

DO NOT attempt to install this product on motorcycles from any different brand, model and/or year than stated on the pages of this manual.

DO NOT use this kit for cars, boats, jet-skies, snowmobiles, ATV's, aircraft, hovercrafts or any other vehicle and/or purpose.

HYPERPRO steering dampers are FOR RACE USE ONLY, NOT FOR HIGHWAY USE!

Before installation:

- Please read the entire manual carefully before starting the installation!
- Check if you have all the tools required. Good tools are a must.
- Protect your bike at the most important places in and around the work area (e.g. tank, fairing, frame, etc.) with a blanket, towel or similar.

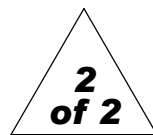
During installation:

- Check all operations and parts carefully before, during and after performing each step.
- Clean all surfaces that are required for fitting parts together or for applying self adhesives or loctite, thoroughly with contact cleaner or another degreaser, unless otherwise stated.
- Be careful not to damage or scratch any part of your bike.
- ALWAYS work relaxed and concentrated!! It is very easy to damage something or make a mistake.

After installation:

- Check and make sure that there is no contact between any part of the steering damper kit and any part of the motorcycle. The kit should not hit anything. Steering movement should not be limited by the steering damper. If the steering movement is limited, adjust the position of the tube in the clamp until steering movement is normal again. Do not forget to tighten the clamp bolt again!
- ALWAYS check the steering movement and feeling before each ride!
- FIRST RIDES: Start with the damper turned fully open (turn adjuster knob fully counter clockwise). Start adjusting in between rides with steps of MAX. 2 CLICKS (0.25 TURN) EACH TIME, until the damper is working satisfactory for your riding style.
- NEVER USE MAXIMUM SETTING, ALWAYS OPEN AT LEAST 2 CLICKS (0.25 TURN).

- WARNING ! DAMPER HAS AN ACTIVE / SPEEDSENSITIVE DAMPING SYSTEM;
 - Steering with NORMAL MOVEMENT should be FREE !!
 - Steering with FAST MOVEMENT should be CONTROLLED BY DAMPER !!
- HYPERPRO uses a special seal to reduce friction. The seal uses an oil film to work properly. It is normal that some oil can appear on the pistonrod.
- Damper works with oil: DAMPING CAN BE HARDER AT LOWER TEMPERATURES!



Step 1: installing the steering lock limiters

Install the lock limiters using:
- Steering lock limiters (self-adhesive)

Clean and degrease the left and right steering lock surfaces on the bottom of the steering head (see illustration). Stick the bumprubbers on the cleaned surfaces, so that the max steering angle will be limited by a few millimeters.

Step 2: installing the frame bracket

Install the frame bracket assembly using:

- Frame bracket (1)
- 2x Bolt M6x30 (2)
- Steering damper stroke 75mm (3)

Remove the standard M6 bolts and washers from the top mounting points of the radiator. Install the frame bracket (1), using the supplied M6x30 bolts (2), do not use the washers. Tighten the bolt with a torque of approx. 5-9Nm/44-80Lbs.In/4.0-6.4Lbs.Ft.

Shove the steering damper (3) through the clamp, until a distance similar to the picture on page is reached. Adjust the angle of the adjustment house, so it clears the radiator by approx. 5mm. Temporarily tighten the clamp bolt (4) with a torque of approx. 6Nm/53Lbs.In/4.4Lbs.Ft.

Step 3: installing the fork bracket

Install the fork bracket using:

- Fork bracket assembly (5)
- Bolt M6x25 button head (6)
- Bolt M6x16 (7)

Remove the two standard M6 bolts from the brake housing and the headlamp frame. Fit the fork assembly to the top triple tree as shown on page 1: Place the fork-bracket (5) over the headlamp frame, place the brake housing on the fork bracket. Place the supplied M6 bolts in place and tighten the bolts with a torque of approx. 5-9Nm/44-80Lbs.In/4.0-6.4Lbs.Ft.

Step 4: final installation

Finish the steering damper installation using:

- Bolt M8x30 button head (8)
- Locknut M8 (9)

Use the M8 bolt (8) and locknut (9) to fixate the uniball to the fork bracket and tighten with a torque of approx. 14-17Nm/124-150Lbs.In/10.3-12.5Lbs.Ft.

Check if the damper is level horizontally and aligned to the bike. Check if the forklegs do not touch the damper when steering fully left or right. Check if the bike can make it's full steering angle from left to right.

Adjust the distance of the damper through the clamp for a better fitment result. Once finished, tighten the clamp bolt (4) with a torque of approx. 6Nm/53Lbs.In/4.4Lbs.Ft.

See WWW.HYPERPRO.COM for the latest pictures, modifications, specs. and e-drawings of this steering damper kit.