



RESEARCH & DEVELOPMENT OF AMERICA, INC.

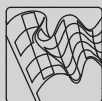
5420 DANIELS STREET STE A, CHINO CA 91710 · (800) 634-9166 · (909) 628-4722 · FAX (909) 591-2198

WWW.YOSHIMURA-RD.COM

Signature Series

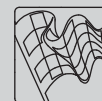
Qualified Manufacturer Declared "Replacement Part"

**2004~2005
Honda TRX450R
2275703-SA (SS/AL)
TRC Stainless Steel Slip-On**



Signature Series systems are:

- CARB/EPA tail-pipe emissions compliant.
- Marked with appropriate EPA noise labels.
- Independent laboratory tested for EPA new vehicle noise compliance.



CAUTION: The muffler packing on this system MUST be replaced every 6-8 hours of use, or every 1-2 motos. Failure to follow recommended muffler re-packing interval can cause muffler damage and may void the warranty.



NOTE: IN THE STATE OF CALIFORNIA, IT IS ILLEGAL TO MODIFY THE EMISSION CONTROL SYSTEM, WHICH INCLUDES THE FUEL INJECTION OF ANY VEHICLE.

Caution: Exhaust system can be extremely hot. Let motorcycle cool down before beginning installation.

Note: Read through all instructions before beginning installation.

Tools Needed:

10mm and 12mm Socket
4mm Allen wrench
Ratchet wrench and extension
Torque wrench

Installation Steps:

- 1 Unbolt and remove stock muffler. (See Fig.'s 1 & 2)
- 2 Slide supplied collector clamp onto Yoshimura tailpipe. Install tailpipe with muffler onto stock header. (Do not tighten clamp at this time)

NOTE: The stock collector gasket is not used on this system and must be removed if it sticks to the header.

- 3 Insert supplied rubber grommet into muffler mount. Install supplied aluminum insert into grommet with shoulder facing toward ATV. (See Fig. 3)
- 4 Bolt tailpipe chassis mount to frame using the stock bolt, washers and nut. (Leave loose at this time)
- 4 Bolt muffler mount to chassis using supplied bolt, washer, spacer and stock washer & nut.
- 5 Torque muffler clamp bolt and chassis mount bolts to 2.5 kg-m (18 lb-ft).
- 7 Torque collector clamp nut to 2.0 kg-m (14.5 lb-ft)



Fig. 1

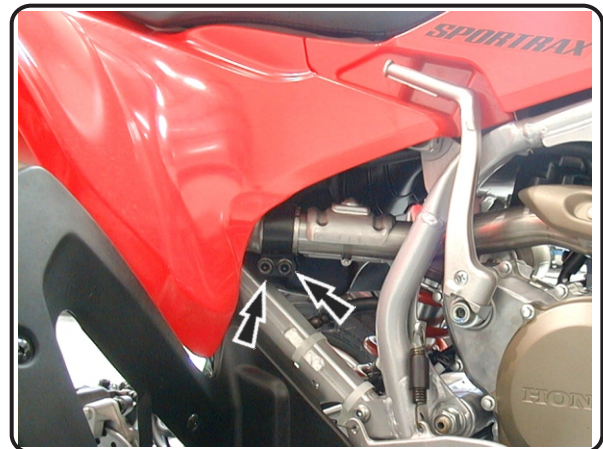


Fig. 2

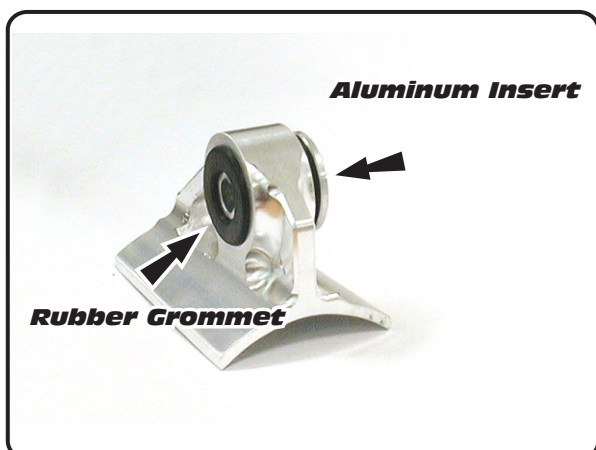
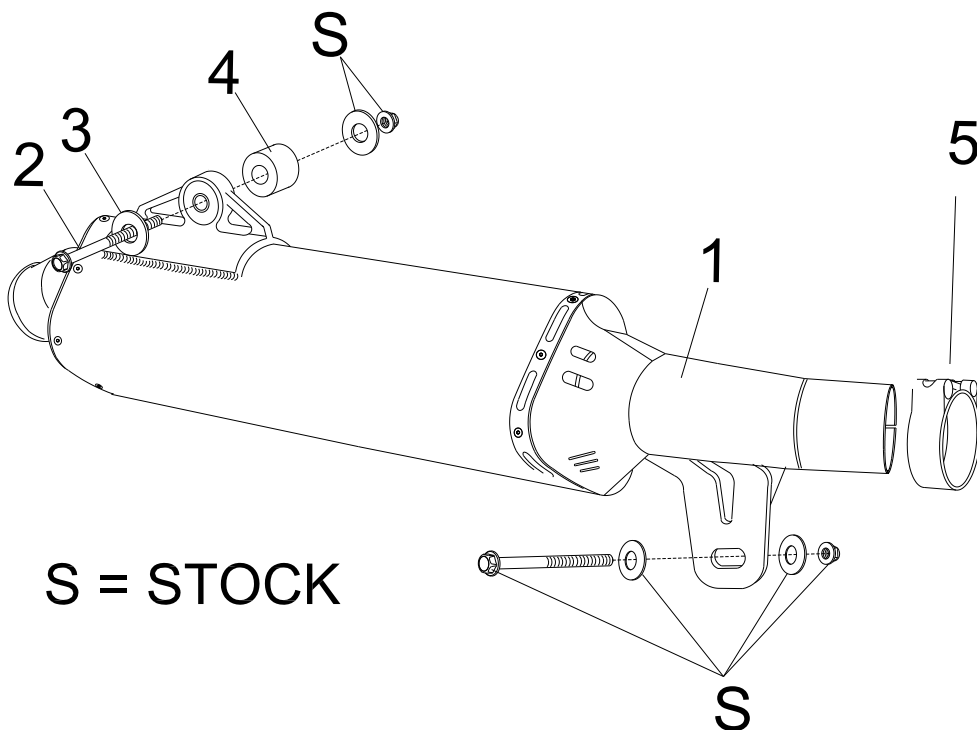


Fig. 3

- 8 It is recommended that the exhaust system be wiped down with rubbing alcohol to remove oil and fingerprints. This will help prevent tarnishing of the finish after the exhaust is heated up.
- 9 Before starting engine check for proper clearance between new exhaust system and chassis body work or any moving parts. (i.e. rear brake, frame, tire, etc.) If any problem is found, please carefully follow through the installation steps again. If a problem still persists please call the Yoshimura technical department at (800)634-9166, in California call (909)628-4722.

NOTE: After starting the ATV, it is normal for new exhaust system and muffler to emit smoke until oil residue burns off.

#2275703-SA



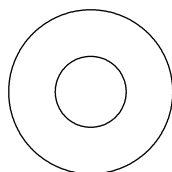
Parts Diagram

NO.	DESCRIPTION	QTY	PART #
1	Yoshimura Tailpipe with TRS Muffler	1	**
2	8mm X 90mm Flange Head Bolt	1	M8X90H
3	Large Washer	1	8MMWASHERL
4	Aluminum Spacer	1	8X14SPC
5	Collector Clamp	1	22057
**	Rubber Muffler Mount Grommet	1	011257-00
**	Aluminum Insert for Grommet	1	ALS-001
**	Yoshimura Wash Plug	1	347PLUG
**	Yoshimura Vinyl Sticker	1	17029

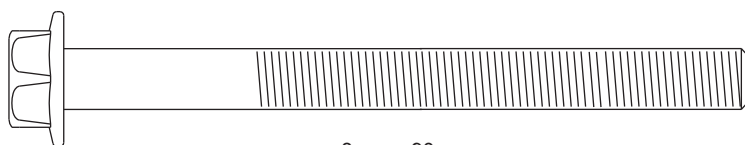
Jetting/Tuning Recommendations:

Stock jetting

Nuts and Bolts Guide (Actual Size):



8mm Large Flat Washer



8mm x 90mm
Flange Hex Bolt



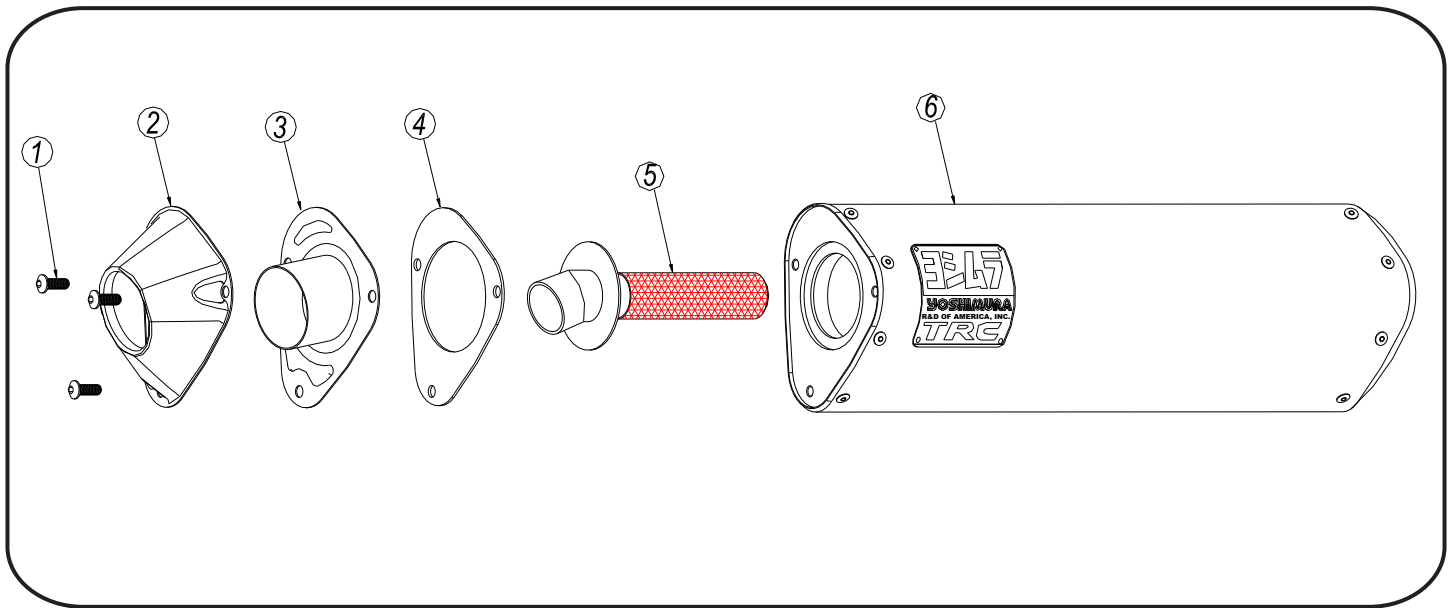
YOSHIMURA

RESEARCH & DEVELOPMENT OF AMERICA, INC.

4555 CARTER COURT, CHINO CALIF. 91710 · (800)634-9166 · (909)628-4722 · FACSIMILE (909)591-2198

www.yoshimura-rd.com

TEC-SB Spark Arrester Cleaning Information



Parts Diagram

Caution: *Muffler can be extremely hot. Let muffler cool down before removing spark arrester.*

Note: *Read through all instructions before beginning disassembly.*

Tools Needed:

4mm Allen Key
Wire Brush
Pair of Gloves
Safety Glasses

Cleaning Steps:

1 Using a 4mm Allen key remove the three 6mm x 16mm Button Head Screws located in the muffler end cap. (See Parts Diagram for location)

2 Remove the end cap, gasket and spark arrester from the muffler.

NO.	DESCRIPTION	QTY
1	6 x 1.0mm x 16mm Button Head Screw	3
2	TRC End Cap Cover	1
3	TRC End Cap Insert	1
4	T.E.C. End Cap, Gasket	1
5	T.E.C. Low Volume Spark Arrester	1
6	Muffler Assembly	1

3 Using a wire brush remove carbon deposits from spark arrester screen. Once clean inspect the screen for excessive wear or damage, if any is found the spark arrester must be replaced. Cleaning and inspection should be performed after every 60 hours of use.

(Caution: Gloves and Safety Glasses should be worn while cleaning spark arrester.)

4 Re-install spark arrester, gasket, end cap and 6mm x 16mm screws into muffler assembly. Torque screws to 1.0 kg-m (7.3 lb-ft)

(Note: It is recommended that a low strength "Loctite" is used on the screws.)