



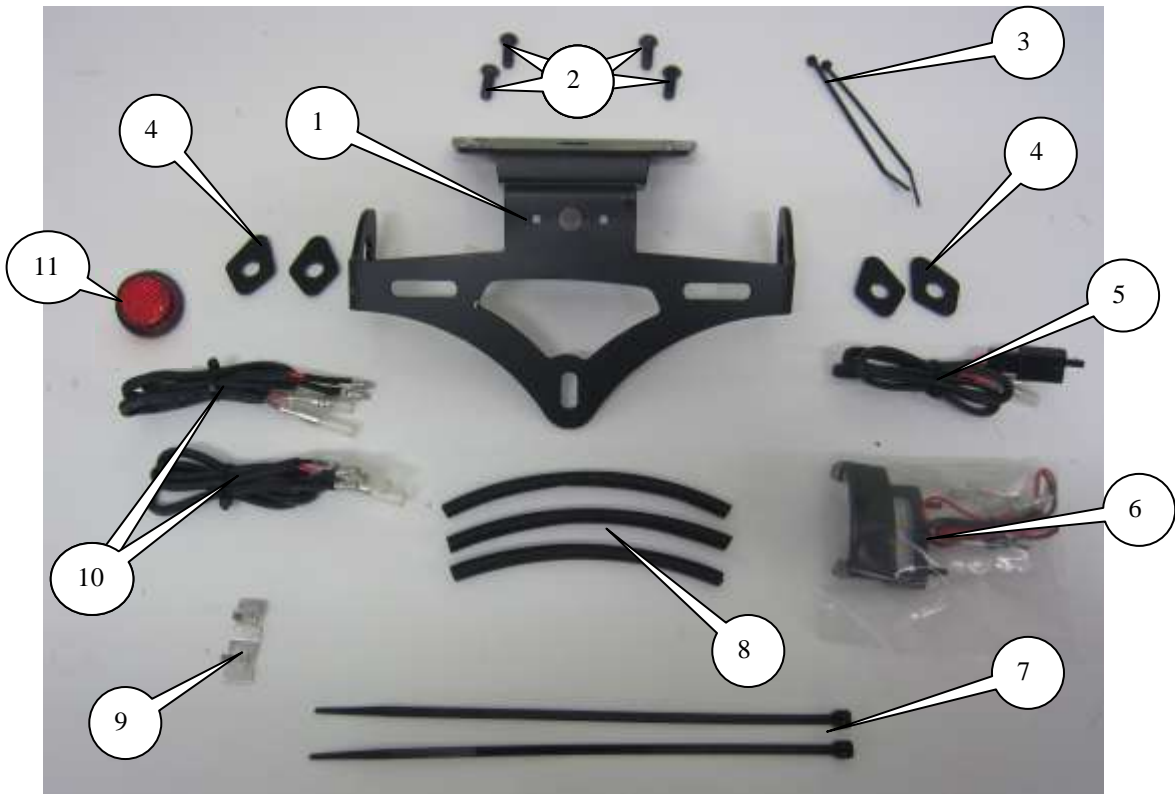
FITTING INSTRUCTIONS FOR LP0155BK LICENCE PLATE BRACKET
WK 650i 2013



EMS PICTURED AND LABELLED BELOW.
DO NOT PROCEED UNTIL YOU ARE SURE ALL PARTS ARE PRESENT.

Please note that the way the kit is packed does not necessarily represent the way of mounting to the bike.

THE PARTS SHOWN MAY BE REPRESENTATIVE ONLY (FOR CLARITY OF INSTRUCTIONS ONLY)





LEGEND

- ITEM 1 = LICENCE PLATE BRACKET (TB0155) (x1).
ITEM 2 = M6 x 15mm LONG BUTTON HEAD BOLT (x4).
ITEM 3 = SMALL CABLE TIES (x2).
ITEM 4 = MINI INDICATOR ADAPTORS (I0038) (x4).
ITEM 5 = CON007 LICENCE PLATE LIGHT CONNECTOR (x1).
ITEM 6 = LA0002 LICENCE PLATE ILLUMINATOR ASSEMBLY (x1).
ITEM 7 = LARGE CABLE TIES (x2).
ITEM 8 = 180mm LENGTH OF HEAT-SHRINK (x3)
ITEM 9 = SELF ADHESIVE CABLE CLIPS (x2).
ITEM 10 = CON012 R&G MINI INDICATOR CONNECTORS (x2).
ITEM 11 = REFLECTOR (x1).

Page | 2

Please note that in cases where kits are packed with rubber washers holding the components onto the bolt – *the rubber washers should be thrown away!*

TOOLS REQUIRED

- Set of metric Allen keys to include 4mm A/F sizes.
 - 6 and 10mm socket & wrench.
 - 10 and 12mm spanner.
 - 17mm spanner.
- Small amount of superglue.



Picture 1



Picture 2



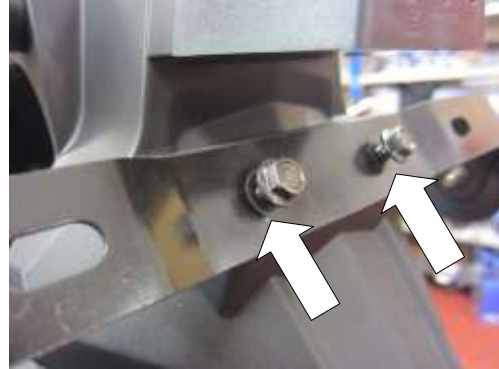
Picture 3



Picture 4



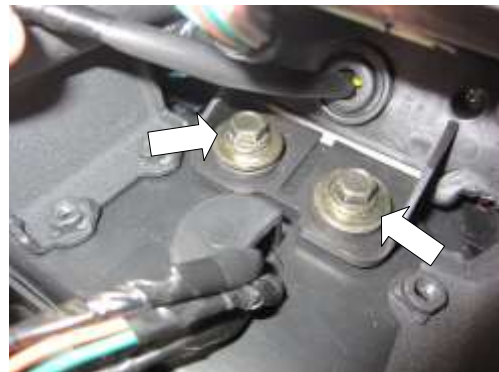
Picture 5



Picture 6



Picture 7



Picture 8



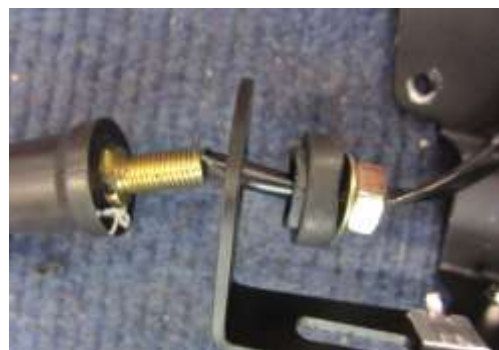
Picture 9



Picture 10



Picture 11



Picture 12



Picture 13



Picture 14



Picture 15



Picture 16

FITTING INSTRUCTIONS

- To fit the R&G tail tidy, first remove the seat using the key.
- Remove the pillion seat using the catch arrowed in picture 2.
- Move the ECU unit as shown in pictures 3 and 4 (no need to disconnect).
- Disconnect the indicator and licence plate illuminator plug sockets (shown in picture 5).
- Remove the two bolts arrowed in picture 6.
- Remove the four bolts arrowed in picture 7.
- Remove the original metal support bracket.
- Undo and remove the two bolts arrowed in picture 8.
- Remove the original plastic licence plate bracket while feed the wires through the rubber grommet as shown in picture 8.
- If reusing the original indicators gently feed the wiring through the central hole as shown in picture 9.
- Undo and remove the nut arrowed in picture 10 and remove both indicators.
- Use one of the larger cable ties to secure the spacers and the two body panels in position as shown in picture 11.
- Fit the indicators of choice to the new licence plate bracket (item 1), if using the original indicators, fit as original as shown in picture 12, if using mini's (R&G product code RG370 for bulb type or RG371 LED type) use the adaptors (item 4) to locate the indicators (please use the heat shrink (item 8) provided to protect the wiring. Feed the wires through the central hole in the licence plate bracket as shown in pictures 13 and 14.
- Use one of the small cable ties through the two small holes in the licence plate bracket and the self-adhesive clips to secure the wires into position as shown in pictures 15 and 16.

R&G Racing

Unit 1, Shelley's Lane, East Worldham, Alton, Hampshire, GU34 3AQ

Tel: +44 (0)1420 89007 Fax: +44 (0)1420 87301 www.rg-racing.com Email: info@rg-racing.com



- Offer the new licence plate bracket into position on the under-tray while feeding the wires through the rubber grommet and use the four M6 bolts (item 2) to secure the licence plate bracket in position as shown in picture 16.
- Reconnect the licence plate illuminator using the connection (item 5) from the kit (*if illumination fails, swap the bullet connections around*).
- If applicable use the two connectors (item 10) from fit to connect the indicators.
- If applicable reconnect the original indicators.
- It is a good idea to check all lights at this stage.
- Use the cable ties to tidy the wiring in position.
- Refit the ECU unit as original.
- Refit the rider and pillion seats as original and licence plate (it may require drilling).
- **IMPORTANT: IF FITTING A FULL-SIZE LICENCE PLATE AND PLACING IT FAR DOWN ON THE LICENCE PLATE HANGER, THERE IS A SMALL CHANCE OF THE LICENCE PLATE HITTING THE BACK WHEEL UNDER HEAVY LOAD AND OVER LARGE BUMPS IN THE ROAD. IT IS YOUR RESPONSIBILITY TO CHECK FOR THIS POSSIBILITY AND TAKE AVOIDING ACTION. FAILURE TO CHECK THIS COULD RESULT IN SERIOUS INJURY OR DAMAGE.**
- Depending on local laws, attach enclosed reflector (item 11) in an appropriate location.
- Test the license plate illuminator and all lights before riding.

ISSUE 1 14/01/2014 (NSY)

CONSUMER NOTICE

The catalogue description and any exhibition of samples are only broad indications of the Products and R&G may make design changes which do not diminish their performance or visual appeal and supplying them in such state shall conform to the order. The Buyer acknowledges no representation or warranty (other than as to title) has been given or will apply to the Products other than those in R&G's order or confirmation and the Buyer confirms it has chosen the Products as being of merchantable quality and suitable for its particular purposes. Where R&G fits the Products or undertakes other services it shall exercise reasonable skill and care and rectify any fault free of charge unless the workmanship has been disturbed. The Buyer is responsible for ensuring that the warranty on the motorcycle is not affected by the fitting of the Products. On return of any defective Products R&G shall at its option either supply a replacement or refund the purchase money but shall not be liable if the Products have been modified or used or maintained otherwise than in accordance with R&G's or manufacturer's instructions and good engineering practice or if the defect arises from accident or neglect. Other than identified above and subject to R&G not limiting its liability for causing death and personal injury, it shall not be liable for indirect or consequential loss and otherwise its liability shall be limited to the amounts paid by the Buyer for the Products or the fitting or service concerned. These terms do not affect the Buyer's statutory rights.

R&G RACING RETURNS POLICY (NON-FAULTY GOODS)

Returns must be pre-authorized (if not pre-authorized the return will be rejected). Goods may only be returned direct to us if they were purchased direct from us (customer must prove if necessary). Otherwise to be returned to original vendor. Goods must be in re-sellable condition, in the opinion of R&G Racing. All returns are subject to a 25% restocking and handling fee (25% of the gross value exc. P&P – at the prevailing price at time of purchase). The customer must pay any and all carriage charges. No returns of discontinued products, unless within 14 days of purchase. This policy does not affect your statutory rights and does not refer to faulty goods.



INSTRUCTIONS DE MONTAGE POUR LP0155BK SUPPORT DE PLAQUE
WK 650i 2013

Page | 6



Assurez vous que toutes les pièces soient présentes avant de procéder au montage.

La façon dont le kit est emballé ne correspond pas forcément à la façon de monter les pièces sur la moto.

LES PIECES PRESENTEES PEUVENT N'ETRE QUE REPRESENTATIVES, AFIN DE FACILITER ET CLARIFIER LES INSTRUCTIONS





LEGENDE

- ARTICLE 1 = Support de plaque (TB0155) (x1).
ARTICLE 2 = M6 x 15mm Boulons (x4).
ARTICLE 3 = Petits colliers de serrage (x2).
ARTICLE 4 = Adaptateurs mini clignotants (I0038) (x4).
ARTICLE 5 = CON007 Connecteur feu de plaque (x1).
ARTICLE 6 = LA0002 Assemblage feu de plaque (x1).
ARTICLE 7 = Colliers de serrage larges (x2).
ARTICLE 8 = 180mm Longueur thermo rétractable (x3)
ARTICLE 9 = Clips câbles autocollants (x2).
ARTICLE 10 = CON012 Connecteurs R&G mini clignotants (x2).
ARTICLE 11 = Réfléchissant (x1).

Page | 7

NOTEZ QUE SI LES KITS SONT EMBALLES AVEC DES RONDELLES EN CAOUTCHOUC SERVANT A TENIR LES COMPOSANTS, CES RONDELLES DOIVENT ETRE JETTES!

OUTILS REQUIS

- Jeu de clés Allen 4mm.
- Clé plate 6 et 10mm.
- Clé 10 et 12mm.
 - Clé 17mm.
- Un peu de superglue.



Photo 1



Photo 2





Photo 3



Photo 4



Photo 5

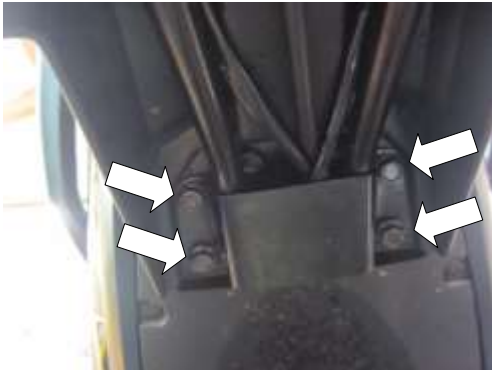


Photo 6

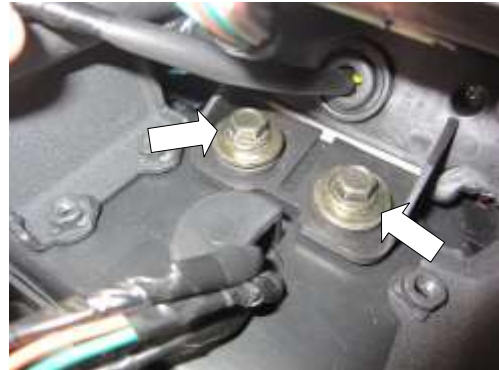


Photo 7



Photo 8



Photo 9



Photo 10





Photo 11



Photo 12



Photo 13



Photo 14



Photo 15

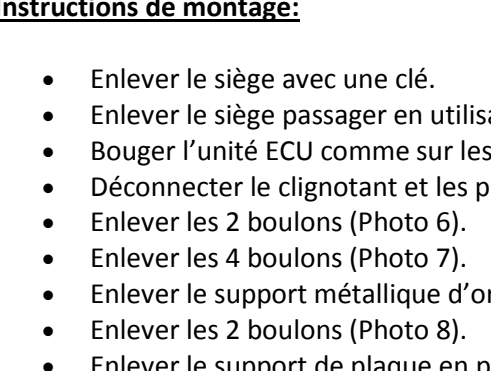
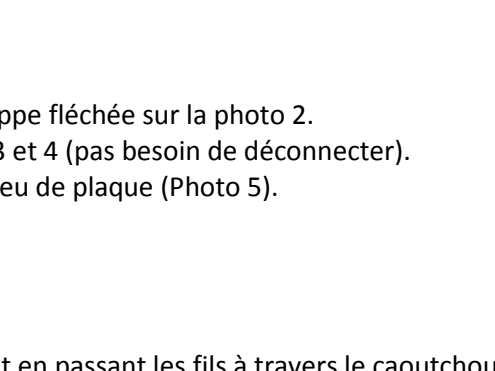


Photo 16



Instructions de montage:

- Enlever le siège avec une clé.
- Enlever le siège passager en utilisant la trappe fléchée sur la photo 2.
- Bouger l'unité ECU comme sur les photos 3 et 4 (pas besoin de déconnecter).
- Déconnecter le clignotant et les prises de feu de plaque (Photo 5).
- Enlever les 2 boulons (Photo 6).
- Enlever les 4 boulons (Photo 7).
- Enlever le support métallique d'origine.
- Enlever les 2 boulons (Photo 8).
- Enlever le support de plaque en plastique tout en passant les fils à travers le caoutchouc (Photo 8).
- Si vous réutilisez les clignotants d'origine, passez doucement les fils à travers le trou central (Photo 9).
- Enlever l'écrou indiqué sur la photo 10 et les 2 clignotants.
- Utiliser un des colliers de serrage pour fixer les entretoises et les 2 caches comme sur la photo 11.
- Installez les clignotants de votre choix sur le support de plaque (Article 1), si vous utilisez les clignotants d'origine, montez les comme à l'origine (Photo 12), et si vous utilisez les mini clignotants R&G (code produit RG370 pour type ampoule et RG371



- pour type LED) utilisez les adaptateurs (Article 4) pour positionner les clignotants (utilisez la thermo rétractable fournie (Article 8) pour protéger les fils. Passer les fils à travers le trou central dans le support de plaque (Photos 13 et 14).
- Passer un des petits colliers de serrage à travers les 2 petits trous dans le support de plaque et les clips autocollants pour fixer les fils en position (Photos 15 et 16).
 - Mettre le nouveau support de plaque en position sur le passage de roue tout en passant les fils à travers le caoutchouc puis utiliser les 4 boulons M6 (Article 2) pour fixer le support de plaque en position (Photo 16).
 - Reconnecter le feu de plaque en utilisant la connexion (Article 5) du kit si l'éclairage échoue, permutez les connecteurs).
 - (si applicable) use the two connectors (Article 10) from fit to connect the indicators.
 - Reconnectez les clignotants d'origine (si applicable)
 - A ce stade, il est bon de vérifier que les feux fonctionnent.
 - Utiliser les colliers de serrage pour bloquer les fils en position.
 - Remettre l'unité ECU comme à l'origine.
 - Remettre les sièges, pilote et passager et la plaque d'immatriculation (peut nécessiter un perçage).
 - **IMPORTANT: Si vous installez une grosse plaque, il y a un risque que la plaque entre en contact avec la roue arrière en cas de choc sur la route (bosse, grosse charge etc...). Il est de votre responsabilité de vérifier que cela ne puisse pas se produire. Ne pas effectuer ces vérifications peut entraîner des dommages ainsi que des blessures graves pour le pilote.**
 - Selon la loi locale, monter les réflecteurs (article 11) aux emplacements appropriés.
 - Revérifiez que les clignotants et les feux de plaque fonctionnent bien avant de prendre la route.

ISSUE 1 14/01/2014 (NSY)

CONSUMER NOTICE

The catalogue description and any exhibition of samples are only broad indications of the Products and R&G may make design changes which do not diminish their performance or visual appeal and supplying them in such state shall conform to the order. The Buyer acknowledges no representation or warranty (other than as to title) has been given or will apply to the Products other than those in R&G's order or confirmation and the Buyer confirms it has chosen the Products as being of merchantable quality and suitable for its particular purposes. Where R&G fits the Products or undertakes other services it shall exercise reasonable skill and care and rectify any fault free of charge unless the workmanship has been disturbed. The Buyer is responsible for ensuring that the warranty on the motorcycle is not affected by the fitting of the Products. On return of any defective Products R&G shall at its option either supply a replacement or refund the purchase money but shall not be liable if the Products have been modified or used or maintained otherwise than in accordance with R&G's or manufacturer's instructions and good engineering practice or if the defect arises from accident or neglect. Other than identified above and subject to R&G not limiting its liability for causing death and personal injury, it shall not be liable for indirect or consequential loss and otherwise its liability shall be limited to the amounts paid by the Buyer for the Products or the fitting or service concerned. These terms do not affect the Buyer's statutory rights.

R&G RACING RETURNS POLICY (NON-FAULTY GOODS)

Returns must be pre-authorized (if not pre-authorized the return will be rejected). Goods may only be returned direct to us if they were purchased direct from us (customer must prove if necessary). Otherwise to be returned to original vendor. Goods must be in re-sellable condition, in the opinion of R&G Racing. All returns are subject to a 25% restocking and handling fee (25% of the gross value exc. P&P – at the prevailing price at time of purchase). The customer must pay any and all carriage charges. No returns of discontinued products, unless within 14 days of purchase. This policy does not affect your statutory rights and does not refer to faulty goods.

R&G Racing

Unit 1, Shelley's Lane, East Worldham, Alton, Hampshire, GU34 3AQ

Tel: +44 (0)1420 89007 Fax: +44 (0)1420 87301 www.rg-racing.com Email: info@rg-racing.com



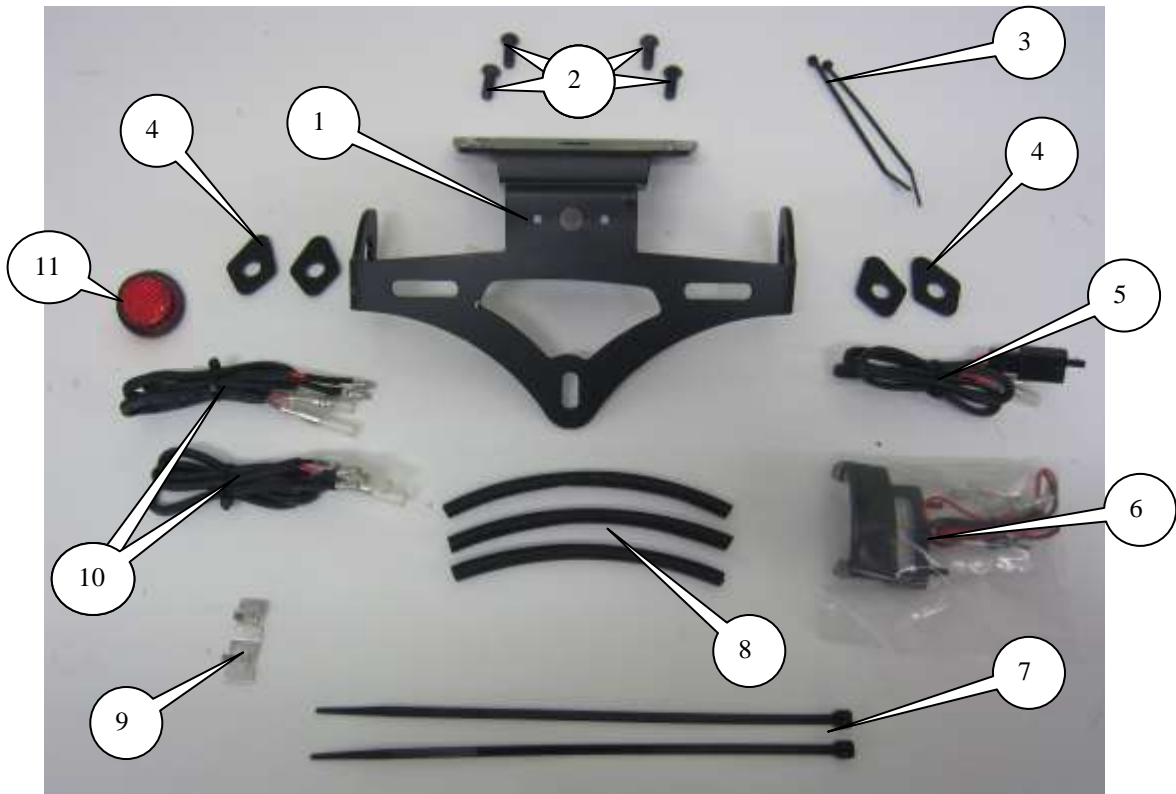
MONTAGEANLEITUNG FÜR LP0155BK KENNZEICHENHALTER
WK 650i 2013



ALLE TEILE SIND UNTEN ABGEBILDET UND GEKENNZEICHNET. BEVOR SIE MIT DER MONTAGE BEGINNEN, ÜBERPRÜFEN SIE, DASS ALLE TEILE VORHANDEN SIND.

Hinweis: Die Verpackung der Teile stellt nicht die Reihenfolge der Montage dar.

DIE UNTEN ABGEBILDETEN TEILE DIENEN LEDIGLICH ZUR ERKLÄRUNG





LIEFERUMFANG:

- ARTIKEL 1 = KENNZEICHENHALTER (TB0155) (x1)
ARTIKEL 2 = M6 x 15mm INBUSSCHRAUBEN (x4)
ARTIKEL 3 = KLEINE KABELBINDER (x2)
ARTIKEL 4 = ADAPTER FÜR MINI-BLINKER (I0038) (x4)
ARTIKEL 5 = CON007 KABELVERBINDER FÜR DIE KENNZEICHENBELEUCHTUNG (x1)
ARTIKEL 6 = LA0002 KENNZEICHENBELEUCHTUNG (x1)
ARTIKEL 7 = GROSSE KABELBINDER (x2)
ARTIKEL 8 = 180mm SCHRUMPFSCHLAUCH (x3)
ARTIKEL 9 = SELBSTKLEBENDE KABELCLIPS (x2)
ARTIKEL 10 = CON012 R&G MINI-BLINKER VERBINDUNGSKABEL (x2)
ARTIKEL 11 = RÜCKSTRAHLER (x1)

Page | 12

Hinweis für Kits mit Plastikunterlegscheiben an den Schrauben – *Diese Plastikunterlegscheiben werden nicht für den Einbau benötigt!*

SIE BENÖTIGEN FOLGENDES WERKZEUG:

- Satz Inbusschlüssel inkl. 4 mm Größe
- Steckschlüsselsatz inkl. 6 & 10 mm Steckschlüssel
 - 10 und 12mm Gabelschlüssel
 - 17 mm Gabelschlüssel
 - Sekundenkleber



Abbildung 1



Abbildung 2



Abbildung 3



Abbildung 4



Abbildung 5

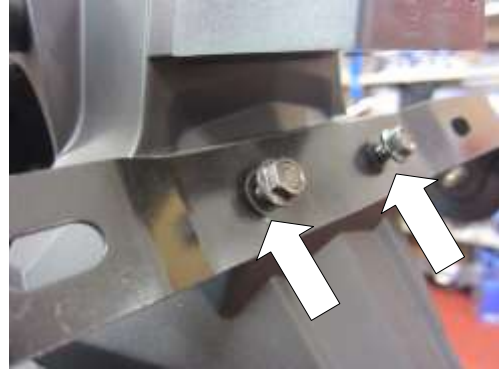


Abbildung 6



Abbildung 7

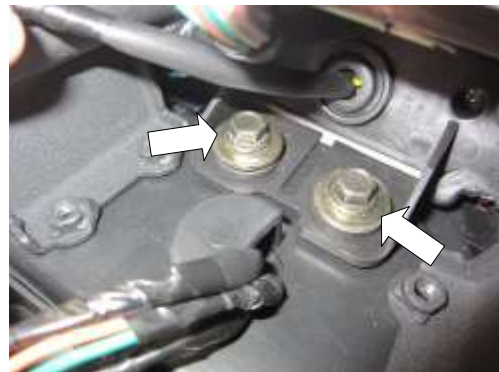


Abbildung 8



Abbildung 9



Abbildung 10



Abbildung 11

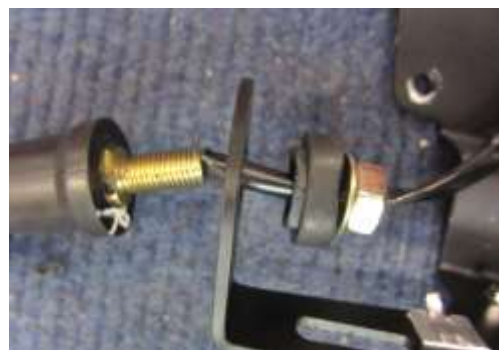


Abbildung 12



Abbildung 13



Abbildung 14



Abbildung 15



Abbildung 16

MONTAGEANLEITUNG

- Um den R&G Kennzeichenhalter montieren zu können, entfernen Sie zuerst den Sitz mittels Schlüssel.
- Entfernen Sie den Soziussitz (siehe Abbildung 2).
- Die ECU-Einheit wie in Abbildungen 3 und 4 dargestellt versetzen (muss nicht getrennt werden).
- Trennen Sie die Steckverbinder für die Blinker und die Kennzeichenbeleuchtung (siehe Abbildung 5).
- Entfernen Sie die zwei Schrauben, die in Abbildung 6 mit Pfeilen markiert sind.
- Entfernen Sie die vier Schrauben, die in Abbildung 7 mit Pfeilen markiert sind.
- Entfernen Sie den Originalhalter aus Metall.
- Lösen und entfernen Sie die zwei Schrauben, die in Abbildung 8 gekennzeichnet sind.
- Entfernen Sie die Original-Kennzeichenhalterung aus Plastik und führen Sie die Kabel durch die Gummitülle – siehe Abbildung 8.
- Wenn Sie die Originalblinker montieren, führen Sie die Kabel vorsichtig durch das mittlere Loch des Kennzeichenhalters wie in Abbildung 9 abgebildet.
- Lösen und entfernen Sie die Mutter (siehe Abbildung 10) und entfernen Sie beide Blinker.
- Benutzen Sie einen der großen Kabelbinder, um die Abstandshalter und die zwei Verkleidungsteile in Position zu befestigen – siehe Abbildung 11.
- Montieren Sie die Blinker Ihrer Wahl am neuen Kennzeichenhalter (Artikel 1). Wenn Sie die Originalblinker verwenden, montieren Sie sie wie ursprünglich (siehe Abbildung 12). Wenn Sie die R&G Mini-Blinker montieren (Produktcode RG370 Glühbirne oder RG371 LED), verwenden Sie die Adapter (Artikel 4), um die Blinker zu fixieren (bitte den mitgelieferten

R&G Racing

Unit 1, Shelley's Lane, East Worldham, Alton, Hampshire, GU34 3AQ

Tel: +44 (0)1420 89007 Fax: +44 (0)1420 87301 www.rg-racing.com Email: info@rg-racing.com



Schrumpfschlauch benutzen, um die Kabel zu schützen). Führen Sie die Kabel durch das mittlere Loch des Kennzeichenhalters wie in Abbildungen 13 und 14 abgebildet.

- Führen Sie einen kleinen Kabelbinder durch die zwei kleinen Öffnungen im Kennzeichenhalter, und mit den selbstklebenden Kabelclips die Kabel in Position befestigen – siehe Abbildungen 15 und 16.
- Halten Sie den neuen Kennzeichenhalter in Position an der unteren Verkleidung und führen Sie die Kabel durch die Gummitülle. Verwenden Sie die vier M6 Schrauben (Artikel 2), um den Kennzeichenhalter in Position zu befestigen (siehe Abbildung 16).
- Verbinden Sie die Kennzeichenbeleuchtung wieder mittels des Verbindungskabels (Artikel 5) (*wenn die Beleuchtung nicht funktioniert, einfach die Verbindungen untereinander tauschen*).
- Falls zutreffend, verwenden Sie die zwei Verbindungskabel (Artikel 10) vom Kit, um die Blinker zu verbinden.
- Falls zutreffend, verbinden Sie die Originalblinker wieder.
- Überprüfen Sie nun die Funktion der Beleuchtung.
- Verwenden Sie die Kabelbinder, um die Verkabelung in Position zu befestigen.
- Montieren Sie die ECU-Einheit wie ursprünglich.
- Montieren Sie den Fahrersitz, Beifahrersitz und das amtliche Kennzeichen (Bohrungen im Kennzeichen evtl. notwendig).
- **WICHTIG: WENN EIN GROSSES KENNZEICHEN ZU WEIT NACH UNTEN MONTIERT WIRD, BESTEHT BEI SCHWERER LAST ODER DURCH GROSSE BODENWELLEN EIN GERINGES RISIKO, DASS DAS KENNZEICHEN AN DAS HINTERRAD STOSSEN KANN. ES LIEGT IN IHRER VERANTWORTUNG DIES ZU ÜBERPRÜFEN UND, WENN NOTWENDIG, ZU VORBEUGENDEN MASSNAHMEN ZU ERGREIFEN. DIE NICHTBEACHTUNG DIESES SICHERHEITSHINWEISES KANN ZU SCHWEREN VERLETZUNGEN FÜHREN.**
- Entsprechend der gesetzlichen Vorschriften, den mitgelieferten Rückstrahler (Artikel 11) anbringen.
- Überprüfen Sie die Funktion der Beleuchtung (Blinker und Kennzeichenhalterbeleuchtung) vor Gebrauch des Fahrzeuges.

AUSGABE 1 14/01/2014 (NSY)

CONSUMER NOTICE

The catalogue description and any exhibition of samples are only broad indications of the Products and R&G may make design changes which do not diminish their performance or visual appeal and supplying them in such state shall conform to the order. The Buyer acknowledges no representation or warranty (other than as to title) has been given or will apply to the Products other than those in R&G's order or confirmation and the Buyer confirms it has chosen the Products as being of merchantable quality and suitable for its particular purposes. Where R&G fits the Products or undertakes other services it shall exercise reasonable skill and care and rectify any fault free of charge unless the workmanship has been disturbed. The Buyer is responsible for ensuring that the warranty on the motorcycle is not affected by the fitting of the Products. On return of any defective Products R&G shall at its option either supply a replacement or refund the purchase money but shall not be liable if the Products have been modified or used or maintained otherwise than in accordance with R&G's or manufacturer's instructions and good engineering practice or if the defect arises from accident or neglect. Other than identified above and subject to R&G not limiting its liability for causing death and personal injury, it shall not be liable for indirect or consequential loss and otherwise its liability shall be limited to the amounts paid by the Buyer for the Products or the fitting or service concerned. These terms do not affect the Buyer's statutory rights.

R&G RACING RETURNS POLICY (NON-FAULTY GOODS)

Returns must be pre-authorized (if not pre-authorized the return will be rejected). Goods may only be returned direct to us if they were purchased direct from us (customer must prove if necessary). Otherwise to be returned to original vendor. Goods must be in re-sellable condition, in the opinion of R&G Racing. All returns are subject to a 25% restocking and handling fee (25% of the gross value exc. P&P – at the prevailing price at time of purchase). The customer must pay any and all carriage charges. No returns of discontinued products, unless within 14 days of purchase. This policy does not affect your statutory rights and does not refer to faulty goods.

R&G Racing

Unit 1, Shelley's Lane, East Worldham, Alton, Hampshire, GU34 3AQ

Tel: +44 (0)1420 89007 Fax: +44 (0)1420 87301 www.rg-racing.com Email: info@rg-racing.com