



YOSHIMURA

RESEARCH&DEVELOPMENT OF AMERICA, INC.

5420 DANIELS STREET STE A, CHINO CA. 91710 · (800) 634-9166 · (909) 628-4722 · FACSIMILE (909) 591-2198

www.yoshimura-rd.com

ENDURO SERIES

Qualified Manufacturer Declared "Replacement Part"

2000~2018

Honda CRF50F / XR50R

220500B250 (SS/CF)

Stainless Steel RS2 Mini Full-System



Enduro Series systems are:

- Equipped with USFS-approved spark arrestor.
- CARB/EPA tail-pipe emissions compliant.
- All applications are marked with appropriate EPA noise labels.
- Have not been tested for EPA new vehicle noise compliance.

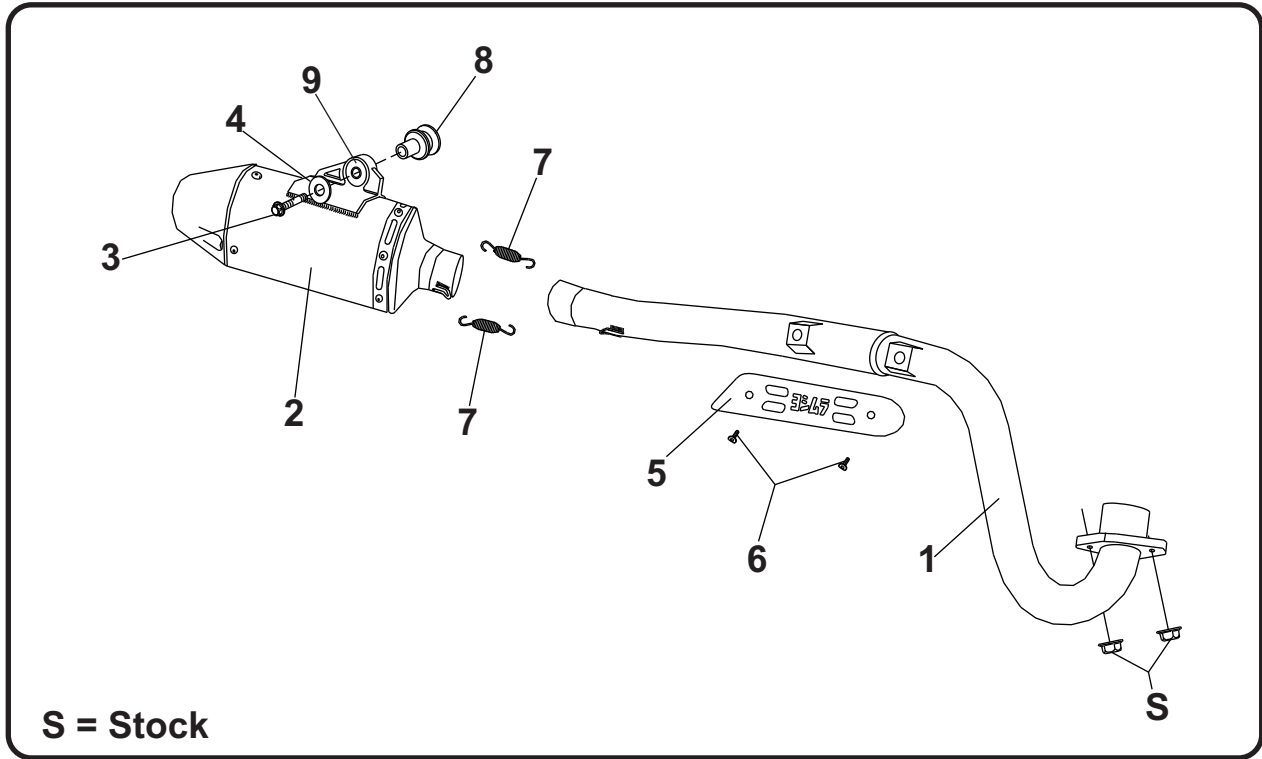


CAUTION: The muffler packing on this system **MUST** be replaced every 6-8 hours of use, or after each moto. Failure to follow recommended muffler re-packing interval can cause muffler damage and may void the warranty.



NOTE: IN THE STATE OF CALIFORNIA, IT IS ILLEGAL TO MODIFY THE EMISSION CONTROL SYSTEM, WHICH INCLUDES THE CARBURETORS OF ANY VEHICLE.

Assembly Diagram



No.	Item	Description	Qty.
1	22050-101	Yoshimura Header	1
2	220500B250-RMA	Yoshimura Muffler Assembly	1
3	M8X65H	8mm x 65mm Flanged Hex Head Bolt	1
4	8MMWASHERL	8mm Large Washer	1
5	2205-HS	Header Heatshield	1
6	RC116HSB	Heatshield Bolts	2
7	RACE-SPS-1	Medium Exhaust Spring	2
8	ALS-009	Aluminum Spacer	1
9	011257-00	Rubber Bushing	1
**	ST-200	Spring Puller Tool	1
**	347PLUG	Wash Plug	1
**	17029	Sticker Sheet	1

** Not shown on diagram.

CAUTION: Exhaust system can be extremely hot. Let motorcycle cool down before beginning installation. Always wear hand and eye protection and take precautionary measures to avoid injury.

WARNING: Always properly support vehicle with a stand and/or lift when servicing or performing any work. Unstable vehicles may present dangerous conditions and may cause property damage and/or personal injury.

NOTE: Read through all instructions before beginning installation.

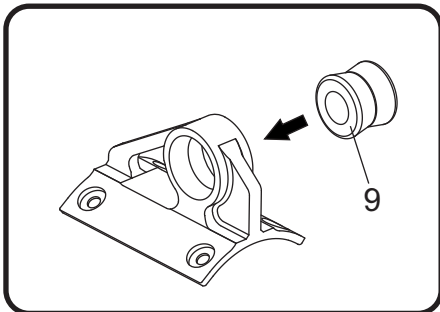
Removal

1. Remove the seat and number plate.
2. While securely supporting the stock exhaust system, remove the muffler mount bolt and header nuts and carefully remove the stock exhaust system.

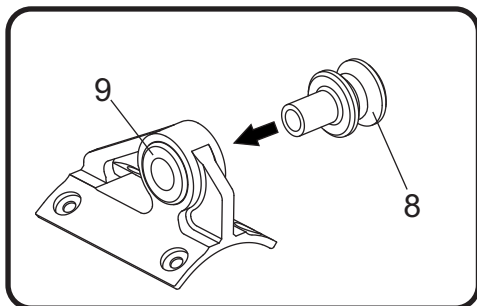
Note: The stock exhaust port gaskets will be re-used. Inspect and replace if necessary.

Installation

1. Install (No. 9) 011257-00, rubber bushing into muffler bracket as shown.



2. Install (No. 8) ALS-009, aluminum spacer into (No. 9) 011257-00, rubber bushing as shown.



3. Install (No. 1) 22050-101, header using the stock header nuts. Do not torque at this time.
4. Install (No. 2) 220500B250-RMA, muffler onto (No. 1) 22050-101, header outlet and align to chassis. Secure muffler using (No. 3,4) M8X65H, bolt and 8MMWASHERL, washer.
5. Torque (No. 3) M8X65H, muffler mount bolt to 26 Nm (2.6 kg-m, 20 ft-lb).
6. Torque the stock header nuts to 26 Nm (2.6 kg-m, 20 ft-lb).
7. Install (No. 7) RACE-SPS-1, medium exhaust spring between muffler and header.
8. Install (No. 5) 2205-HS, header heatshield onto (No. 1) 22050-101, header using the (No. 6) RC116HSB, heatshield bolts as shown on the assembly diagram.
9. Re-install the seat and number plate by following the opposite steps of removal.
10. Before starting vehicle, check for proper clearance between new exhaust system and rear suspension (i.e. tire, swingarm, brakes, rear shock, and etc.) If any problem is found, please carefully follow through the installation steps again. If problem still persists, please call Yoshimura Tech Department at (800) 634-9166 / in CA (909) 628-4722.
11. It is recommended that the muffler and tailpipe be wiped down with rubbing alcohol to remove oil and fingerprints. This will help prevent tarnishing of the finish after the exhaust is heated up.

Note: After starting motorcycle, it is normal for new exhaust system and muffler to emit smoke until oil residue burns off.



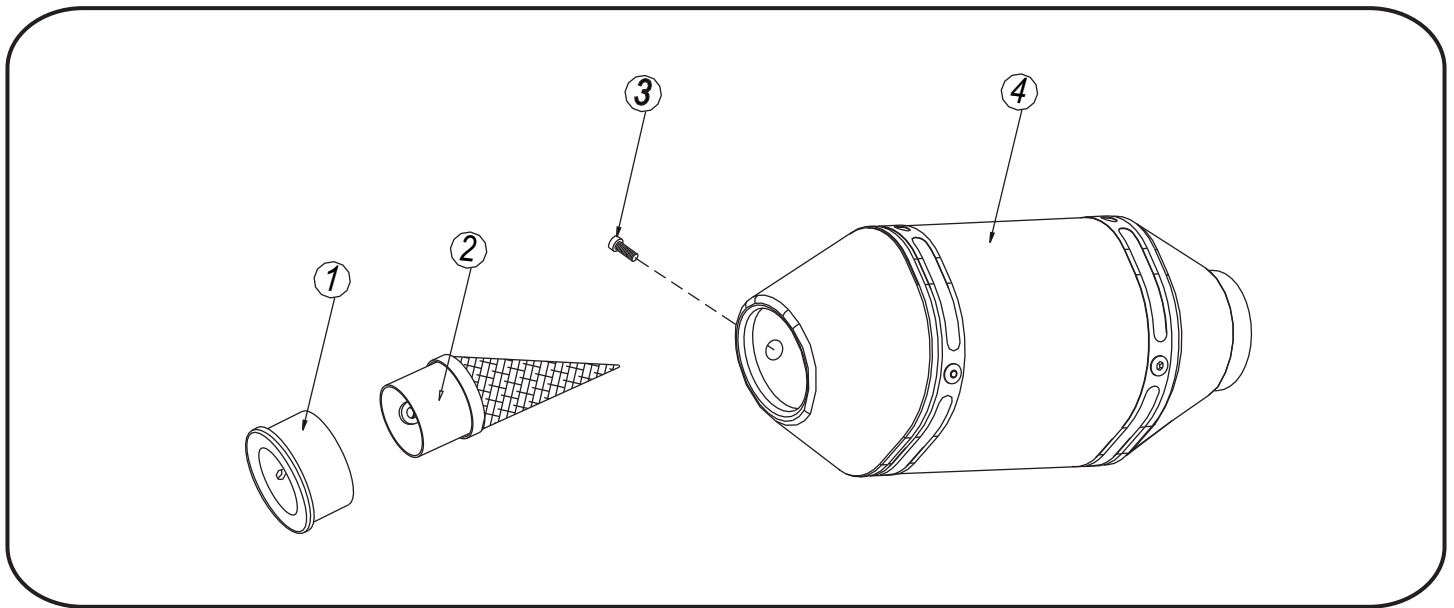
YOSHIMURA

RESEARCH&DEVELOPMENT OF AMERICA, INC.

5420 DANIELS STREET STE A, CHINO CA. 91710 · (800) 634-9166 · (909) 628-4722 · FACSIMILE (909) 591-2198

www.yoshimura-rd.com

TEC-MDS4 Spark Arrester Cleaning Information



Parts Diagram

Caution: *Muffler can be extremely hot. Let muffler cool down before removing spark arrester.*

Note: *Read through all instructions before beginning disassembly.*

Tools Needed:

- 4 mm Allen Key
- Wire Brush
- Pair of Gloves
- Safety Glasses

Cleaning Steps:

- Using a 4mm Allen key, remove the bolt that secures the aluminum ring and spark arrester to the muffler (see Parts Diagram for location).
- Remove the spark arrester from the muffler.

NO.	DESCRIPTION	QTY
1	Aluminum Ring	1
2	Spark Arrester	1
3	Spark Arrester Securing Bolt	1
4	Muffler Assembly	1

- Using a wire brush, remove carbon deposits from spark arrester screen. Inspect the screen for excessive wear or damage. If spark arrester is excessively worn or damaged, the spark arrester must be replaced. Cleaning and inspection should be performed after every 60 hours of use.

CAUTION: *Gloves and safety glasses should be worn while cleaning spark arrester.*

- Re-install spark arrester and aluminum ring. Torque the spark arrester securing bolt to 1.0 kg-m (7.3 lb-ft).

NOTE: *It is recommended that a low strength, high temperature thread-lock is used on the spark arrester securing bolt.*