

HYPHERPRO

STEERING DAMPER MOUNTING KIT

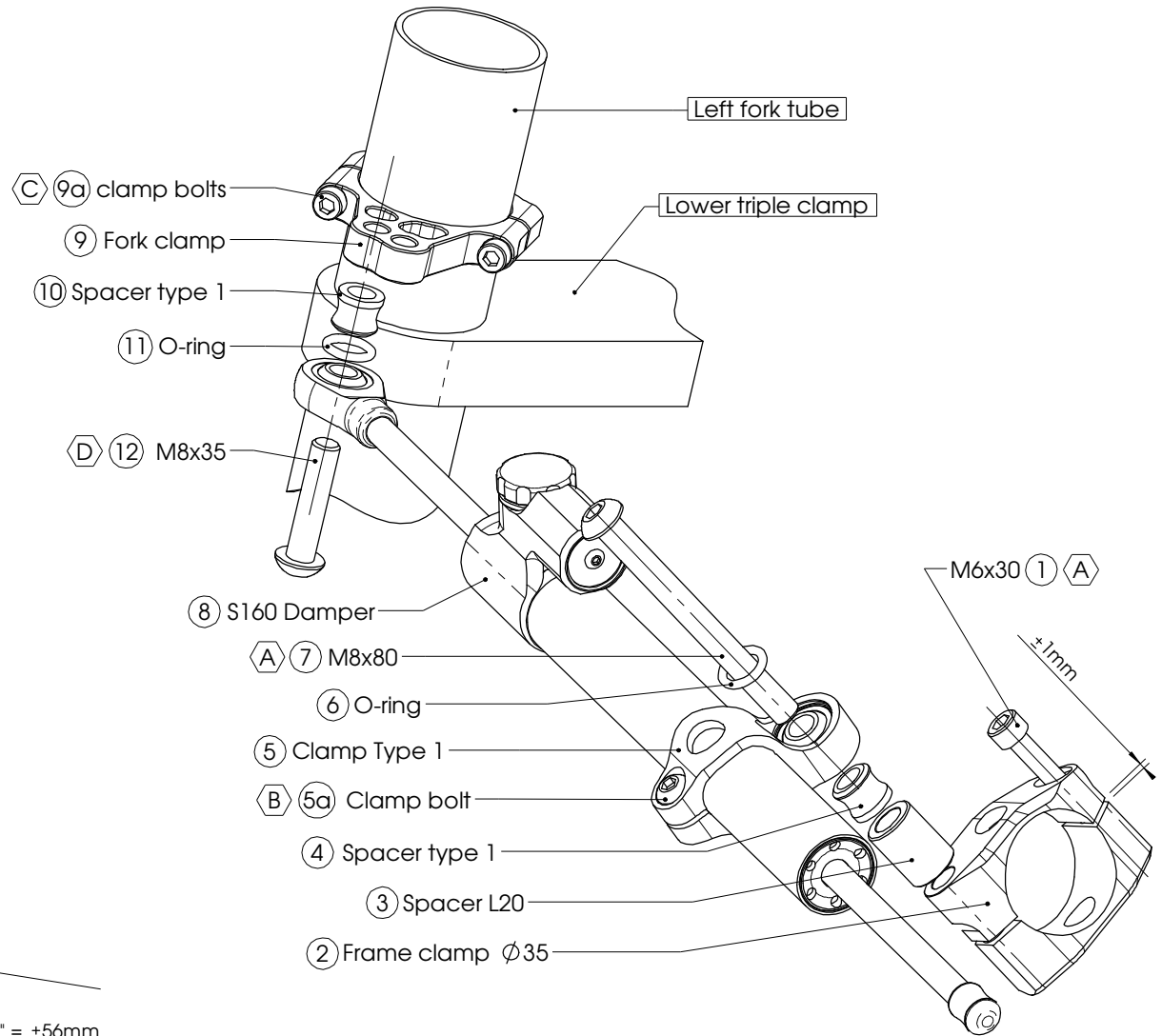
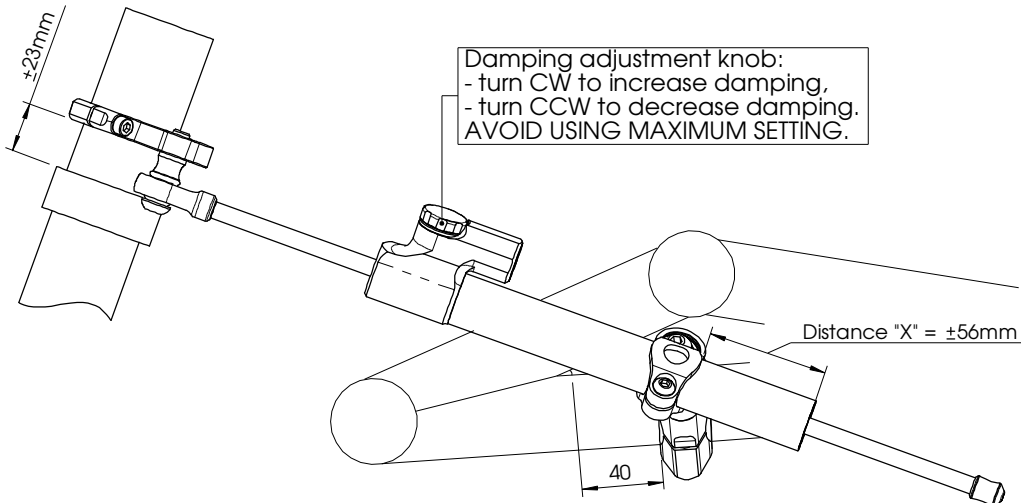
for

YAMAHA BT1100 BULLDOG Models 2002>

MK-YA11-S001 PART LIST

SD stroke 160	1	Spacer D14 d8.2 L20	1
Fork Clamp $\phi 43$	1	O-ring	2
Tube Clamp Type 1	1	-	-
Frame Clamp $\phi 35$	1	-	-
Spacer Type 1	2	-	-
M6x30	1	-	-
M8x35 Button head	1	-	-
M8x80 Button head	1	-	-

ALL IDEAS, DESIGNS ARRANGEMENTS AND PLANS INDICATED OR REPRESENTED BY THIS DRAWING ARE OWNED BY HYPERPRO AND WERE CREATED, EVOLVED AND DEVELOPED FOR USE ON AND IN CONNECTION WITH THE SPECIFIC PROJECT. NONE SUCH IDEAS, DESIGNS, ARRANGEMENTS OR PLANS SHALL BE USED BY OR DISCLOSED TO ANY PERSON, FIRM OR CORPORATION FOR ANY PURPOSE WHATSOEVER WITHOUT THE WRITTEN PERMISSION OF HYPERPRO.



1
of 2

A 10Nm / 88Lbs.In / 7.4Lbs.Ft

C 8Nm / 70Lbs.In / 5.9Lbs.Ft

B 6Nm / 53Lbs.In / 4.4Lbs.Ft

D 14-17Nm / 124-150Lbs.In / 10.3-12.5Lbs.Ft

HYPERPRO

STEERING DAMPER MOUNTING KIT

for

YAMAHA BT1100 BULLDOG Models 2002>

MK-YA11-S001 INSTALLATION INSTRUCTIONS

In general:

HYPERPRO can not be held responsible in any way for any form of physical, material, financial or other damage arising from use, assembly or overhaul of HYPERPRO products. HYPERPRO reserves the right to make changes without prior notice.

This product is ONLY TO BE INSTALLED BY A PROFESSIONAL MECHANIC.

This product is only to be used for the motorcycle brand, model and year stated specifically on top of the pages of this manual.

DO NOT attempt to install this product on motorcycles from any different brand, model and/or year than stated on the pages of this manual.

DO NOT use this kit for cars, boats, jet-skies, snowmobiles, ATV's, aircraft, hovercrafts or any other vehicle and/or purpose.

HYPERPRO steering dampers are FOR RACE USE ONLY, NOT FOR HIGHWAY USE!

Before installation:

- Please read the entire manual carefully before starting the installation!
- Check if you have all the tools required. Good tools are a must.
- Protect your bike at the most important places in and around the work area (e.g. tank, fairing, frame, etc.), with a blanket, towel or similar.

During installation:

- Check all operations and parts carefully before, during and after performing each step.
- Clean all surfaces that are required for fitting parts together or for applying self adhesives or loctite, thoroughly with contact cleaner or another degreaser, unless otherwise stated.
- Be careful not to damage or scratch any part of your bike.
- ALWAYS work relaxed and concentrated!! It is very easy to damage something or make a mistake.

After installation:

- Check and make sure that there is no contact between any part of the steering damper kit and any part of the motorcycle. The kit should not hit anything. Steering movement should not be limited by the steering damper. If the steering movement is limited, adjust the position of the tube in the clamp until steering movement is normal again. Do not forget to tighten the clamp bolt again!
- ALWAYS check the steering movement and feeling before each ride!
- FIRST RIDES: Start with the damper turned fully open (turn adjuster knob fully counter clockwise). Start adjusting in between rides with steps of MAX. 2 CLICKS (0.25 TURN) EACH TIME, until the damper is working satisfactory for your riding style.
- NEVER USE MAXIMUM SETTING, ALWAYS OPEN AT LEAST 2 CLICKS (0.25 TURN).
- WARNING ! DAMPER HAS AN ACTIVE / SPEEDSENSITIVE DAMPING SYSTEM;
 - Steering with NORMAL MOVEMENT should be FREE !!
 - Steering with FAST MOVEMENT should be CONTROLLED BY DAMPER !!
- HYPERPRO uses a special seal to reduce friction. The seal uses an oil film to work properly. It is normal that some oil can appear on the pistonrod.
- Damper works with oil: DAMPING CAN BE HARDER AT LOWER TEMPERATURES!

Step 1: installing the frame and damper clamp

Install the frame clamp assembly using:

- Bolt M6x30 (1)
- Frame clamp (2)
- Spacer D14 d8.2 L20 (3)
- 1x Spacer type 1 (4)
- Damper Clamp Type 1 (5)
- 1x O-ring (6)
- Bolt M8x80 (7)

Install the Frame clamp parts (2) around the left lowest frame tube, as shown on page 1. Make sure it is orientated correctly, fit the M6x30 bolt (1) in the smaller hole and tighten until there is a gap of approx. 1mm between the 2 clamp parts. Fit the spacers (3, 4), damper clamp (5) and O-ring (6) to the bigger hole, using the M8x80 bolt (7). Set the frame clamp at approx. 40mm from the weld and rotate as high up as possible. Tighten the bolt (7) to a torque of approx. 10Nm/88Lbs.In/7.4Lbs.Ft.

Step 2: installing the fork clamp and damper

Install the steering damper using:

- Steering damper, stroke 160 (8)
- Fork clamp (9)
- Spacer Type 1 (10)
- 1x O-ring (11)
- Bolt M8x35 button head (11)

Disassemble the fork clamp. Re-assemble the parts around the left fork leg as shown on page 1, approx. 23mm above the lower triple tree. Make sure it is aligned properly and tighten the clamp-bolts (9a) with a torque of approx. 8Nm/70Lbs.In/5.9Lbs.Ft.

Shove the steering damper (8), with the knob-end first, through the clamp (5) until the ball-joint can be fitted to bottom of the fork clamp (9). Use the spacer (10), O-ring (11) and M8 bolt (12) to fit the ball-joint to the most inner hole and tighten with a torque of approx. 14-17Nm/124-150Lbs.In/10.3-12.5Lbs.Ft.

Position the damper tube until the distance "X" stated on page 1 is reached, then tighten the M6 clamp bolt (5a) with a torque of approx. 6Nm/53Lbs.In/4.4Lbs.Ft.

Check if the bike can make it's full steering angle from left to right. If not, reposition the angle of the fork clamp (9) and retighten the clamp bolts (9a).

Check if the damper does not touch anything (e.g. side cap) when steering from left to right. Adjust the position and angle of the clamps if necessary. Do not forget to re-tighten the parts!

