

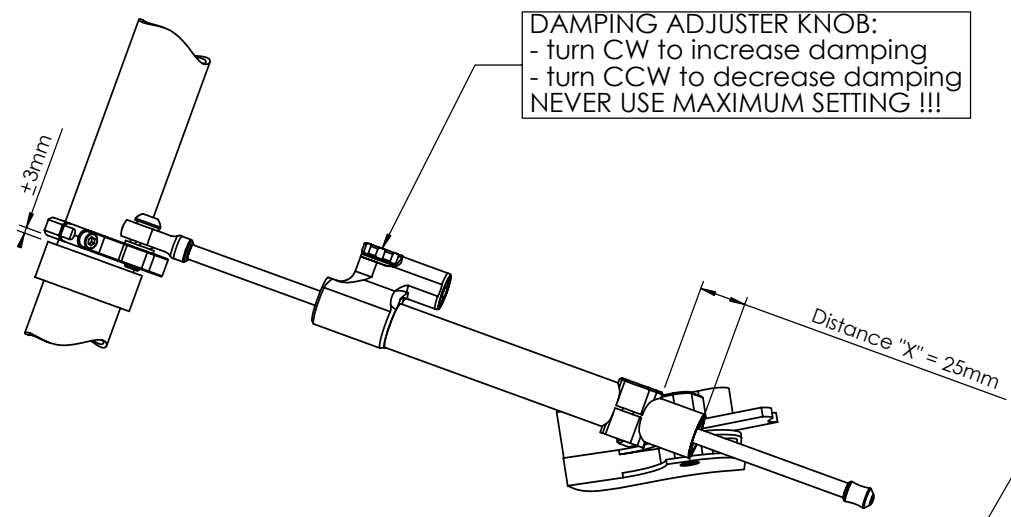
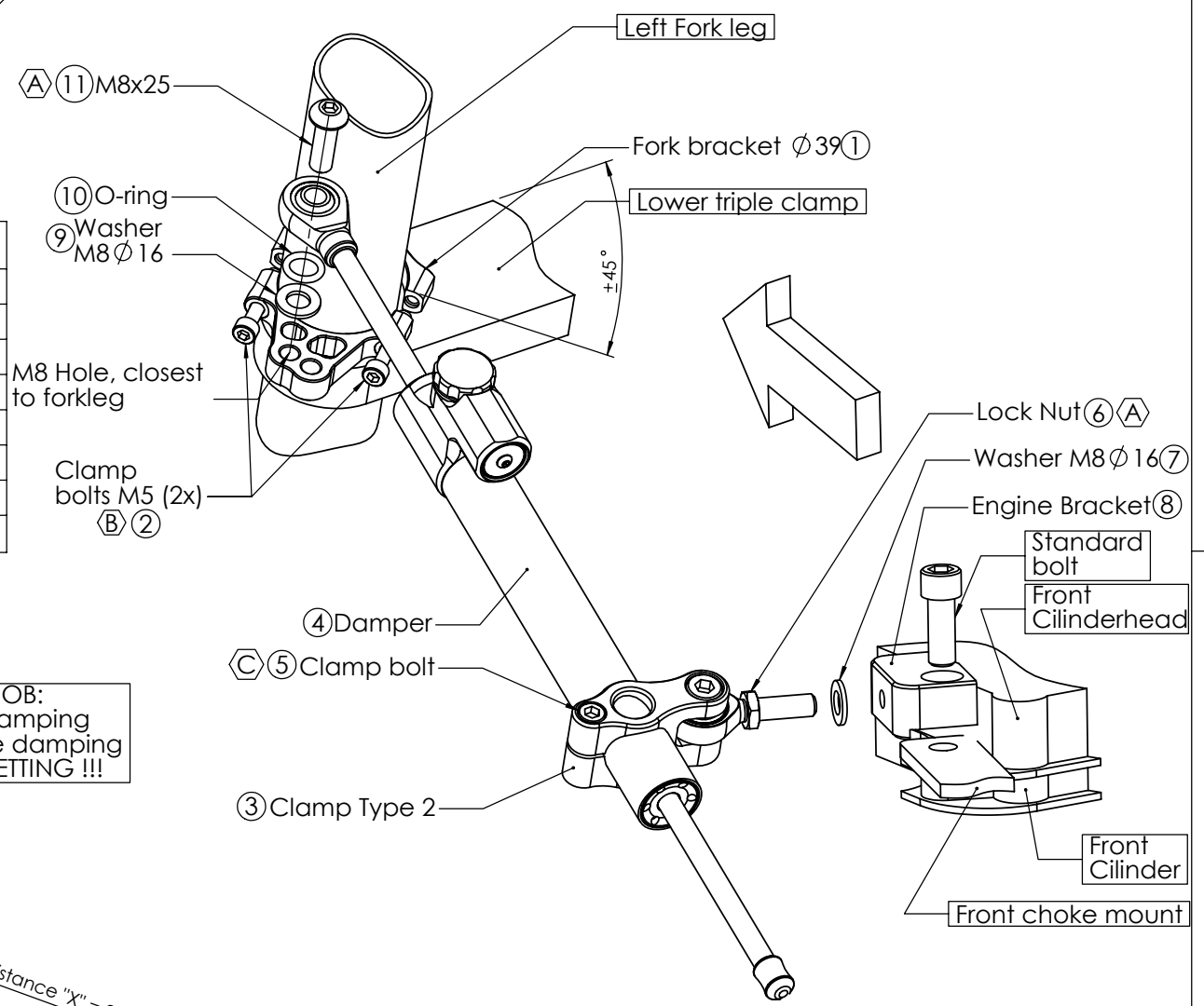
HYPHERPRO

STEERING DAMPER MOUNTING KIT for HARLEY Sportster 883 & 1200 Sport & Custom Model '98>

MK-HD12-S001 PART LIST

SD stroke 160	1	-	-
Tube Clamp TYPE 2	1	-	-
O-Ring	1	-	-
Engine Bracket	1	-	-
Fork Clamp Ø 39	1	-	-
M8x25 Button head	1	-	-
Washer M8 Ø 16	2	-	-
-	-	-	-

ALL IDEAS, DESIGNS ARRANGEMENTS AND PLANS INDICATED OR REPRESENTED BY THIS DRAWING ARE OWNED BY HYPERPRO AND WERE CREATED, EVOLVED AND DEVELOPED FOR USE ON AND IN CONNECTION WITH THE SPECIFIC PROJECT. NONE SUCH IDEAS, DESIGNS, ARRANGEMENTS OR PLANS SHALL BE USED BY OR DISCLOSED TO ANY PERSON, FIRM OR CORPORATION FOR ANY PURPOSE WHATSOEVER WITHOUT THE WRITTEN PERMISSION OF HYPERPRO.



**1
of 2**

(A)	14-17Nm / 124-150Lbs.In / 10.3-12.5Lbs.Ft	(C)	6Nm / 53Lbs.In / 4.4Lbs.Ft
(B)	8Nm / 70Lbs.In / 4.4Lbs.Ft		

See WWW.HYPERPRO.COM for the latest pictures, modifications, specs. and e-drawings of this steering damper kit.

HYPHERPRO

STEERING DAMPER MOUNTING KIT

for

HARLEY Sportster 883 & 1200 Sport & Custom Model '98>

MK-HD12-S001 INSTALLATION INSTRUCTIONS

In general:

HYPHERPRO can not be held responsible in any way for any form of physical, material, financial or other damage arising from use, assembly or overhaul of HYPHERPRO products. HYPHERPRO reserves the right to make changes without prior notice.

This product is ONLY TO BE INSTALLED BY A PROFESSIONAL MECHANIC. This product is only to be used for the motorcycle brand, model and year stated specifically on top of the pages of this manual.

DO NOT attempt to install this product on motorcycles from any different brand, model and/or year than stated on the pages of this manual.

DO NOT use this kit for cars, boats, jet-skies, snowmobiles, ATV's, aircraft, hovercrafts or any other vehicel and/or purpose.

HYPHERPRO steering dampers are FOR RACE USE ONLY, NOT FOR HIGHWAY USE!

Before installation:

- Please read the entire manual carefully before starting the installation!
- Check if you have all the tools required. Good tools are a must.
- Protect your bike at the most important places in and around the work area (e.g. tank, fairing, frame, etc.), with a blanket, towel or similar.

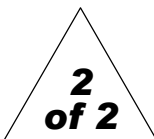
During installation:

- Check all operations and parts carefully before, during and after performing each step.
- Clean all surfaces that are required for fitting parts together or for applying self adhesives or loctite, thoroughly with contactcleaner or another degreaser, unless otherwise stated.
- Be carefull not to damage or scratch any part of your bike.
- ALWAYS work relaxed and concentrated!! It is very easy to damage something or make a mistake.

After installation:

- Check and make sure that there is no contact between any part of the steering damper kit and any part of the motorcycle. The kit should not hit anything. Steering movement should not be limited by the steering damper. If the steering movement is limited, adjust the position of the tube in the clamp untill steering movent is normal again. Do not forget to tighten the clamp bolt again!
- ALWAYS check the steering movement and feeling before each ride !
- FIRST RIDES: Start with the damper turned fully open (turn adjuster knob fully counter clockwise). Start adjusting in between rides with steps of MAX. 2 CLICKS (0.25 TURN) EACH TIME, untill the damper is working satisfactory for your riding style.
- NEVER USE MAXIMUM SETTING, ALWAYS OPEN AT LEAST 2 CLICKS (0.25 TURN).

- WARNING ! DAMPER HAS AN ACTIVE / SPEEDSENSITIVE DAMPING SYSTEM;
 - Steering with NORMAL MOVEMENT should be FREE !!
 - Steering with FAST MOVEMENT should be CONTROLLED BY DAMPER !!
- HYPHERPRO uses a special seal to reduce friction. The seal uses an oil film to work properly. It is normal that some oil can appear on the pistonrod.
- Damper works with oil: DAMPING CAN BE HARDER AT LOWER TEMPERATURES!



Step 1: installing the fork bracket

- Fork bracket ϕ 39 (1)

Remove the 2 M5 clamp bolts (2) from the fork bracket assembly (1). Place the two halves around the left forkleg, just above the lower triple clamp as shown on the pictures on page 1. Make sure that the 'short' hole is on the outside of the bike and reposition the bolts. Keep about 3mm clearance between clamp and the fork's lower triple clamp. Position under 45° from riding direction. Tighten the bolts with a torque of approx. 8Nm/70Lbs.In/5.9Lbs.Ft

Step 2: engine bracket pre-assembly

- Clamp TYPE 2 (3)
- Steering damper (4)
- Washer M6 ϕ 12 (7)
- Engine bracket (8)

Put the assembly together as shown on page 1: Place the damper (4) in clamp type 2 (3) and tighten the clamp bolt (5) when distance X (=25mm) is reached. Use a torque of 6Nm/ 53Lbs.In/4.4Lbs.Ft. Screw the lock nut (6) about 2mm from max.thread (see pic.) then place the washer (7) over the thread and screw on the engine bracket as far as possible, untill the approximate angle between the brackets (3 & 8) on page 1 is reached. DO NOT TIGHTEN THE LOCKNUT YET.

Step 3: installing the steering damper

- Steering damper - engine bracket pre-assembly (3-8)
- 1x Washer M8 ϕ 16 (9)
- O-ring (10)
- Bolt M8x25 button head (11)

Use the washer (9), O-ring (10) and M8 bolt (11) to fixate the balljoint to the fork bracket, as shown in the picture and tighten with a torque of approx. 14-17Nm/124-150Lbs.In/ 10.3-12.5Lbs.Ft. Remove the standard choke mount bolt and place the engine bracket over the choke mount. Replace the bolt and tighten again using standard torque. Tighten the lock nut (6) with a torque of approx. 14-17Nm/124-150Lbs.In/10.3-12.5Lbs.Ft.

Check if the damper is level horizontally and aligned to the bike.
Check if the damper does not touch anything (e.g. engine) when steering from left to right.
Check if the bike can make it's full steering angle from left to right.

See WWW.HYPHERPRO.COM for the latest pictures, modifications, specs. and e-drawings of this steering damper kit.